

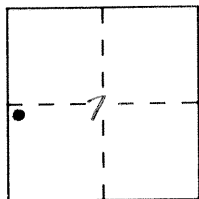
CORNER RECORD

Document Number 1545-A

City of _____

County of Merced, California

Brief Legal Description Witness Corner



8/15

CORNER TYPE

Government Corner Control
 Meander Property
 Rancho Other
 Date of Survey 8-10-92

COORDINATES (Optional)

N. _____
 E. _____
 Zone _____ Datum _____
 Elev. _____

Corner — Left as found Found and tagged Established Reestablished Rebuilt

Identification and type of corner found: Evidence used to identify or procedure used to establish or reestablish the corner:

A description of the physical condition of the monument as found and as set or reset: _____

Fd. 1/2" Iron Pipe, L.S. 4052

F.B. 658-17

SURVEYOR'S STATEMENT

This Corner Record was prepared by me or under my direction in conformance with the Land Surveyors' Act on Sept 3 19 93.

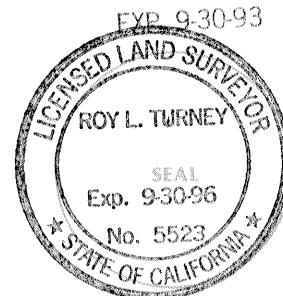
Signed [Signature] L.S. or R.C.E. Number _____



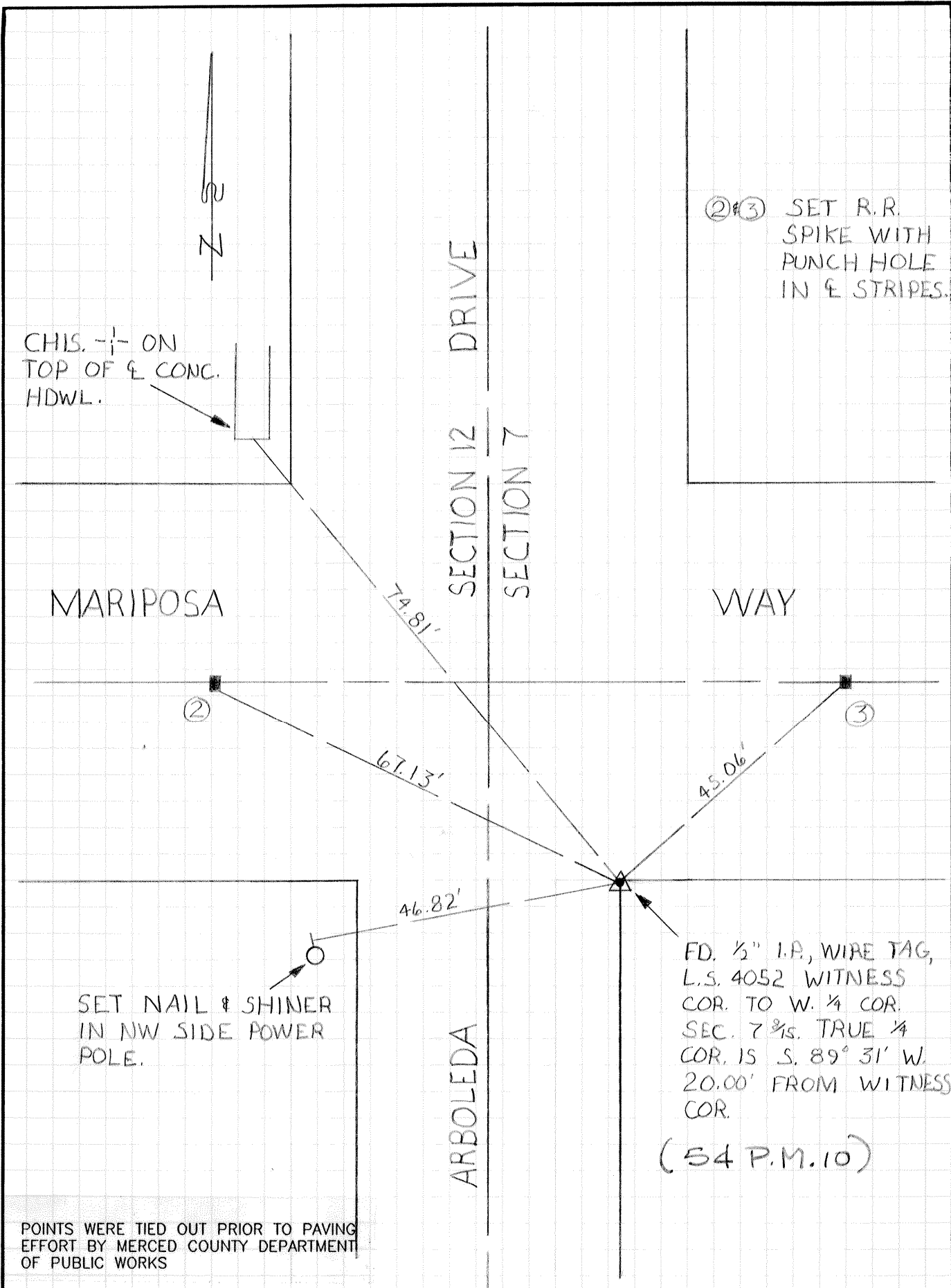
COUNTY SURVEYOR'S STATEMENT

This Corner Record was received 9-3- 19 93 and examined and filed 9-7- 19 93.

Signed [Signature] Title Dep. Co. Surveyor



County Surveyor's Comment _____



Not affected by paving.