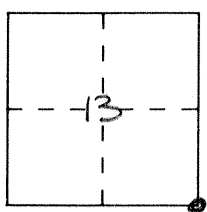


**CORNER RECORD**

Document Number 1544

City of \_\_\_\_\_ County of Merced, California

Brief Legal Description S.E. Corner Section 13 8/14



8/14

**CORNER TYPE**

- Government Corner  Control
- Meander  Property
- Rancho  Other
- Date of Survey 8-11-92

**COORDINATES (Optional)**

N. \_\_\_\_\_  
 E. \_\_\_\_\_  
 Zone \_\_\_\_\_ Datum \_\_\_\_\_  
 Elev. \_\_\_\_\_

Corner — Left as found  Found and tagged  Established  Reestablished  Rebuilt

Identification and type of corner found: Evidence used to identify or procedure used to establish or reestablish the corner:  
 \_\_\_\_\_  
 \_\_\_\_\_  
 \_\_\_\_\_  
 \_\_\_\_\_

A description of the physical condition of the monument as found and as set or reset: \_\_\_\_\_  
Fd. spike  
 \_\_\_\_\_  
 \_\_\_\_\_

F.B. 658-18

**SURVEYOR'S STATEMENT**

This Corner Record was prepared by me or under my direction in conformance with the Land Surveyors' Act on Sept 3 1993.

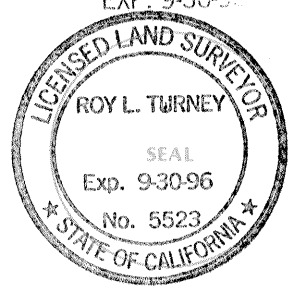
Signed [Signature] L.S. or R.C.E. Number \_\_\_\_\_



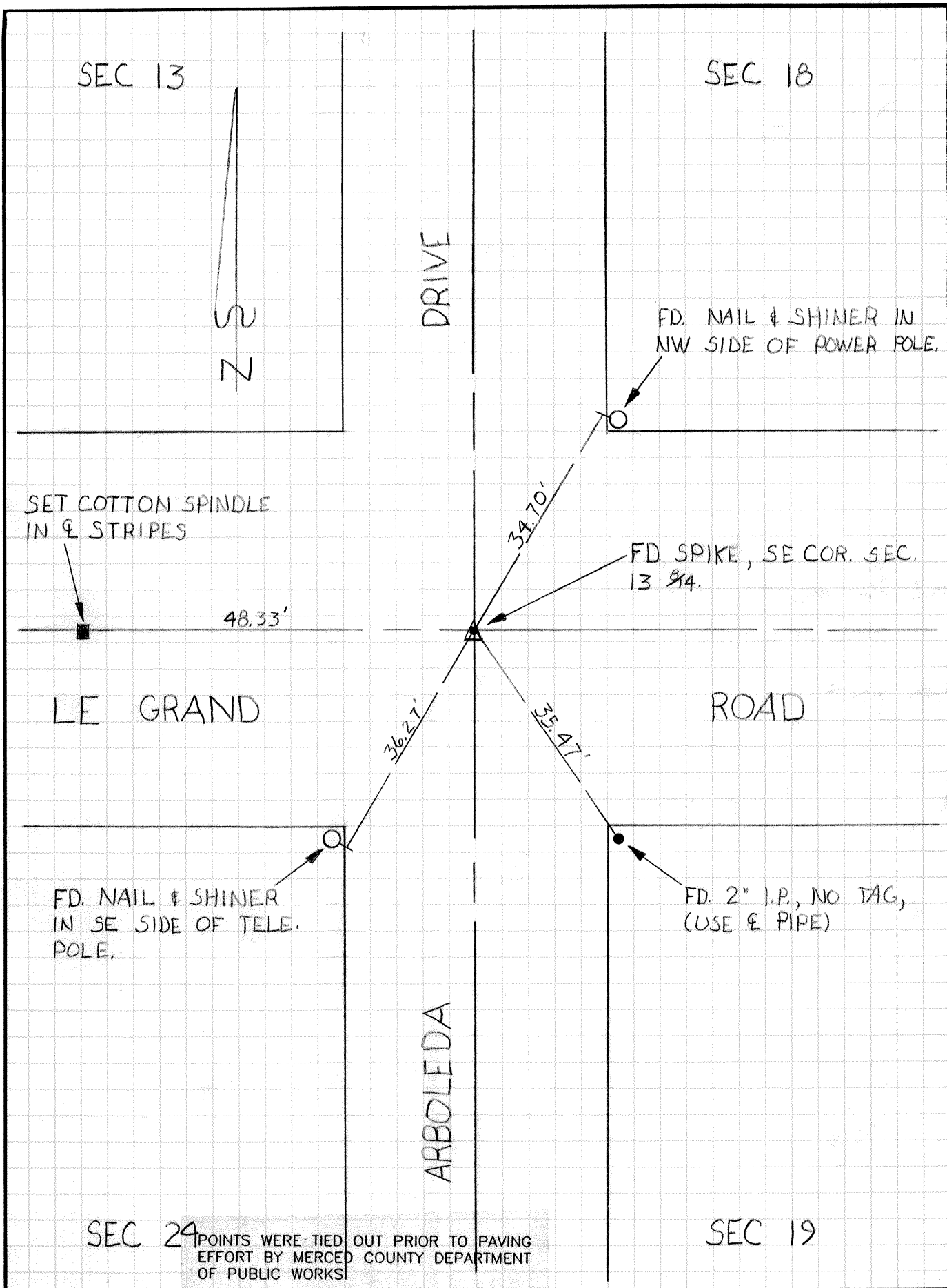
**COUNTY SURVEYOR'S STATEMENT**

This Corner Record was received 9-3- 1993 and examined and filed 9-7- 1993.

Signed [Signature] Title Dep. Co. Surveyor



County Surveyor's Comment \_\_\_\_\_  
 \_\_\_\_\_  
 \_\_\_\_\_  
 \_\_\_\_\_



Not repaved.