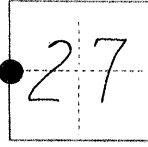


CORNER TYPE: GOV'T. CORNER MEANDER RANCHO CONTROL OTHER

CORNER IDENTIFICATION — DATE OF VISIT June 21, 19 84



West quarter corner 27 8/11.

CORNER — LEFT AS FOUND FOUND AND TAGGED REESTABLISHED OBLITERATED CORNER REBUILT

PHYSICAL DESCRIPTION OF CORNER FOUND; EVIDENCE AND METHOD USED TO IDENTIFY OR REESTABLISH

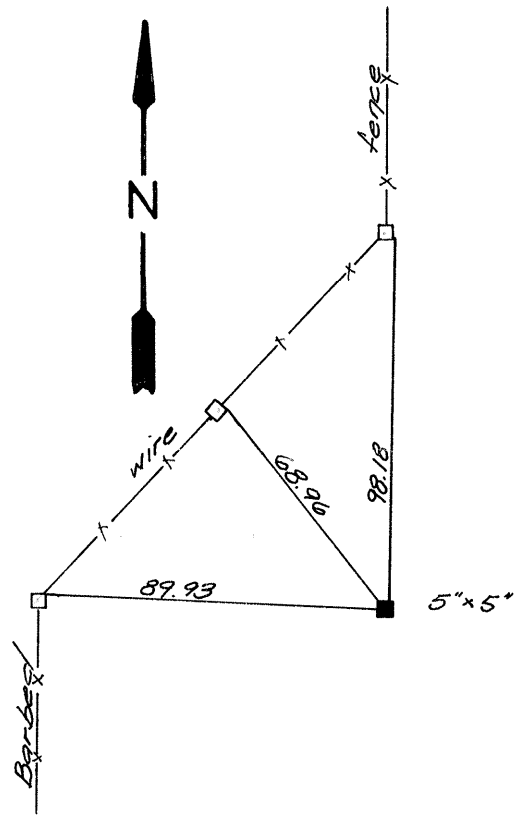
Found a 5" x 5" redwood extending 1.0' above ground surface. Scribing on south face illegible. Description checks with "Map of Survey made for J. A. Turner", by A. E. Cowell, file #1-T-3 in the Merced County Surveyors office.

PHYSICAL DESCRIPTION OF MONUMENTS REBUILT OR PERPETUATED

SKETCH: (Include reference tie or witness points, remarks and topo of area)

Ties

- 98.18' South of nail & shiner in fence post.
- 89.93' East of nail & shiner in fence post.
- 68.96' Southeast of nail & shiner in fence post.
- On line with fence to north.



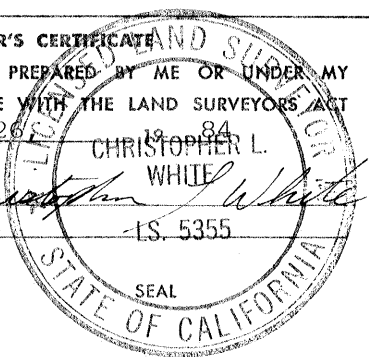
SURVEYOR'S CERTIFICATE

THIS CORNER RECORD WAS PREPARED BY ME OR UNDER MY DIRECTION IN CONFORMANCE WITH THE LAND SURVEYORS ACT ON June 26, 19 84

CHRISTOPHER L. WHITE

SIGNED: *Christopher L. White*

L.S. or REC No.: 5355 L.S. 5355



COUNTY SURVEYOR'S CERTIFICATE

THE CORNER RECORD WAS RECEIVED 29 JUNE 19 84 AND EXAMINED AND FILED 12 JULY 19 84

BY: *Robert J. Hill*
TITLE: County Surveyor

DOCUMENT No. 1478

STATEMENT ON BACK OF SHEET YES NO