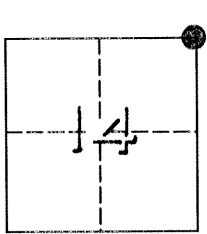


CORNER RECORD

DPD-3011A (Rev. 3/98) CT# 7541-4554-2

Document Number 1423

City of _____ County of MERCED, California
Brief Legal Description N.E. CORNER SECTION 14, T.7S., R.10E., M.D.M. AS SHOWN ON PLAT STEVINSON COLONY SUBDIVISION NO. 1



CORNER TYPE

COORDINATES(Optional)

Government Corner Control
Meander Property
Rancho Other

N. _____
E. _____
Zone _____ NAD27 NAD83
NAD83 Epoch _____
Elevation _____
Vert. Datum: NGVD29 NAV88
Meas. Units: Metric Imperial

Date of Survey 2-24-00

Corner - Left as found Established Reestablished Rebuilt

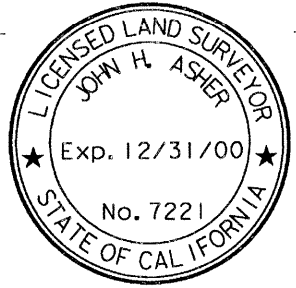
Identification and type of corner found: Evidence used to identify or procedure used to establish or reestablish the corner:
FOUND 3/8" INCH PIN IN CONCRETE, DOWN 2 INCHES, PER MAP OF STEVINSON COLONY SUBDIVISION NO. 1, VOL. 3, PAGE 8, O. P., M. C. R.

A description of the physical condition of the monument as found and as set or reset:
FOUND IN GOOD CONDITION. SET 3 SWING TIES.

SURVEYOR'S STATEMENT

This Corner Record was prepared by me or under my direction in conformance with the Land Surveyor's Act on FEB. 24, 2000.

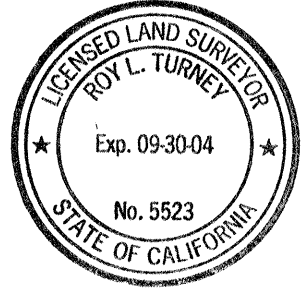
Signed John H. Asher P.L.S. Number 7221
For the State of California
Department of Transportation



COUNTY SURVEYOR'S STATEMENT

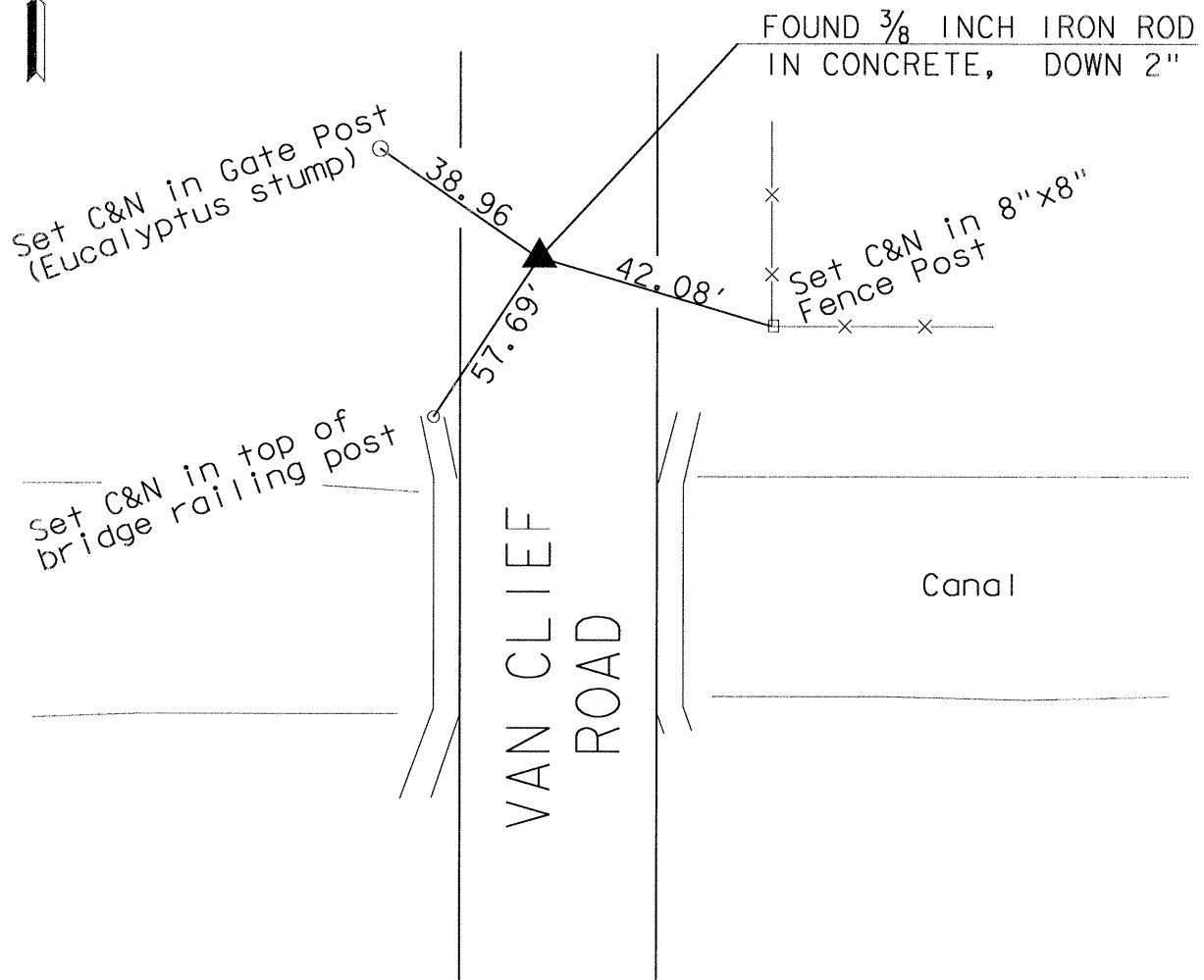
This Corner Record was received AUG. 16, 2000 and examined and filed SEPT. 5, 2000.

Signed Roy L. Turney P.L.S. or R.C.E. Number 5523
Title Deputy Co. Surveyor



County Surveyor's Comment _____

N.E. Cor. Sec. 14, T.7S., R.10E. M.D.M.
 as per Stevinson Colony Subdivision No. 1
 Recorded in Vol. 3, Page 8, O.P., M.C.R.



38.96' NW TO C&N IN GATE POST
 42.08' SE TO C&N IN 8" X 8" CORNER FENCE POST
 57.69' SW TO C&N IN TOP OF WOODEN POST FOR GUARD RAIL