

CORNER RECORD

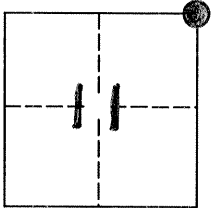
DPD-3011A (Rev. 3/98) CT# 7541-4554-2

Document Number 1422

City of _____

County of Merced, California

Brief Legal Description N.E. Corner Section 11, T.7S., R.10E., M.D.M. AS SHOWN ON PLAT OF STEVINSON COLONY SUBDIVISION NO. 3



CORNER TYPE

Government Corner Control
Meander Property
Rancho Other

Date of Survey 2-24-00

COORDINATES(Optional)

N. _____
E. _____
Zone _____ NAD27 NAD83
NAD83 Epoch _____
Elevation _____
Vert. Datum: NGVD29 NAV88
Meas. Units: Metric Imperial

Corner - Left as found Established Reestablished Rebuilt

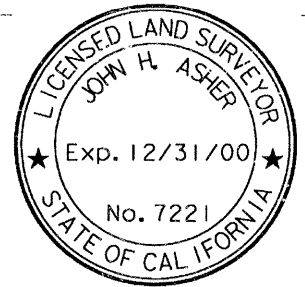
Identification and type of corner found: Evidence used to identify or procedure used to establish or reestablish the corner:
FOUND 3/8" INCH IRON PIN, DOWN 2 FEET, PER MAP OF STEVINSON COLONY SUBDIVISION NO. 3, VOL. 3, PAGE 10, OF PLATS, M. C. R.

A description of the physical condition of the monument as found and as set or reset:
FOUND IN GOOD CONDITION. SET 2' SPREADERS NORTH AND EAST AND 3 SWING TIES.

SURVEYOR'S STATEMENT

This Corner Record was prepared by me or under my direction in conformance with the Land Surveyor's Act on FEB. 24, 2000.

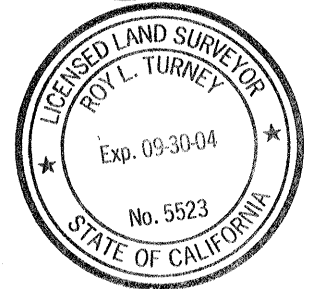
Signed John H. Asher P.L.S. Number 7221
For the State of California
Department of Transportation



COUNTY SURVEYOR'S STATEMENT

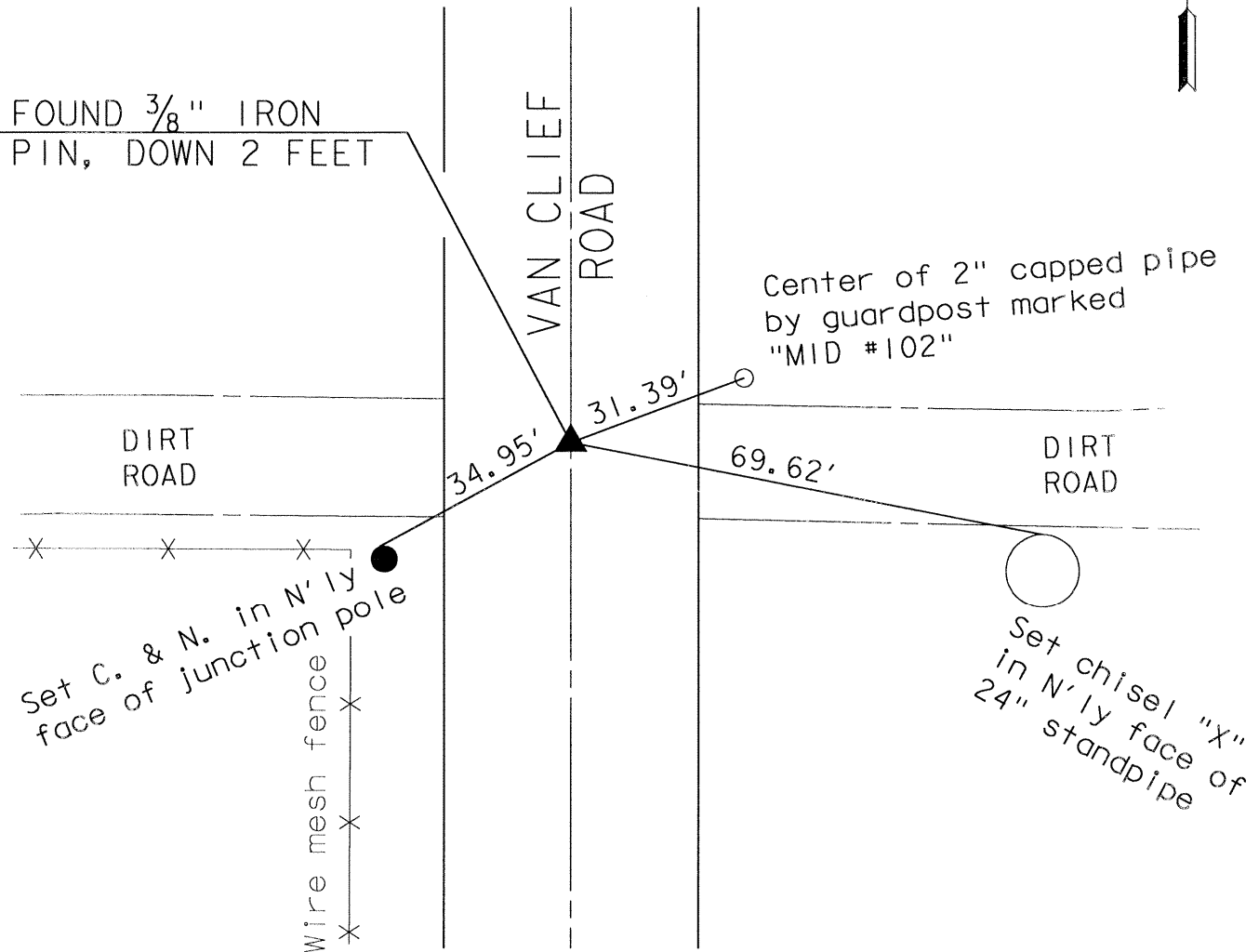
This Corner Record was received AUG. 16, 2000 and examined and filed SEPT. 5, 2000.

Signed Roy L. Turney P.L.S. or R.C.E. Number 5523
Title DEPUTY CO. SURVEYOR



County Surveyor's Comment _____

N.E. Cor. Sec. 11, T.7S., R.10E. M.D.M.
 per Stevinson Colony Subdivision No. 3,
 recorded in Vol. 3, Page 10, OP, M.C.R.



31.39' E-NE TO CTR. OF 2" CAPPED PIPE W/GUARDPOST
 69.62' E-SE TO CHISEL CROSS IN N'LY FACE OF 24" STANDPIPE
 34.95 SW TO C.& N. IN JUNCTION POLE