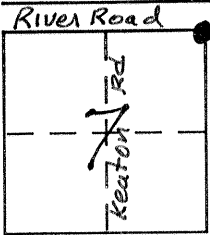


CORNER RECORD

Document Number 1400

City of Unincorporated area of Stanislaus Co. County of Merced, California

Brief Legal Description North East Corner Section 7 T7 R10



CORNER TYPE

- Government Corner Control
- Meander Property
- Rancho Other
- Date of Survey Nov 30 2004

COORDINATES (Optional)

- N. _____
- E. _____
- Zone _____ NAD27 NAD83
- NAD83 Epoch _____
- Elev. _____
- Vert. Datum: NGVD29 NAVD88
- Meas. Units: Metric Imperial

Corner - Left as found Found and tagged Established Reestablished Rebuilt

Identification and type of corner found: Evidence used to identify or procedure used to establish or reestablish the corner:
Section Corner Reference Book 707 Page 10 Merced Public works Field Book

A description of the physical condition of the monument as found and as set or reset:
Found 2 1/2" Dia Brass cap, - 14" below River Road paving. January 21 2005 set 6 1/2" x 9" Metal Monument box w/ Brass Cap Used sack cement as backfill around cylinder. Left in good condition. See RP's set on reverse side. Also, set 2' RP Nails in 4 Quadrants

SURVEYOR'S STATEMENT

This Corner Record was prepared by me or under my direction in conformance with the Land Surveyor's Act on January 24 2005

Signed John E. Coplantz P.L.S. or R.C.E. No. 3664



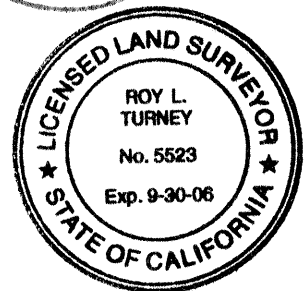
COUNTY SURVEYOR'S STATEMENT

This Corner Record was received 2-1-05

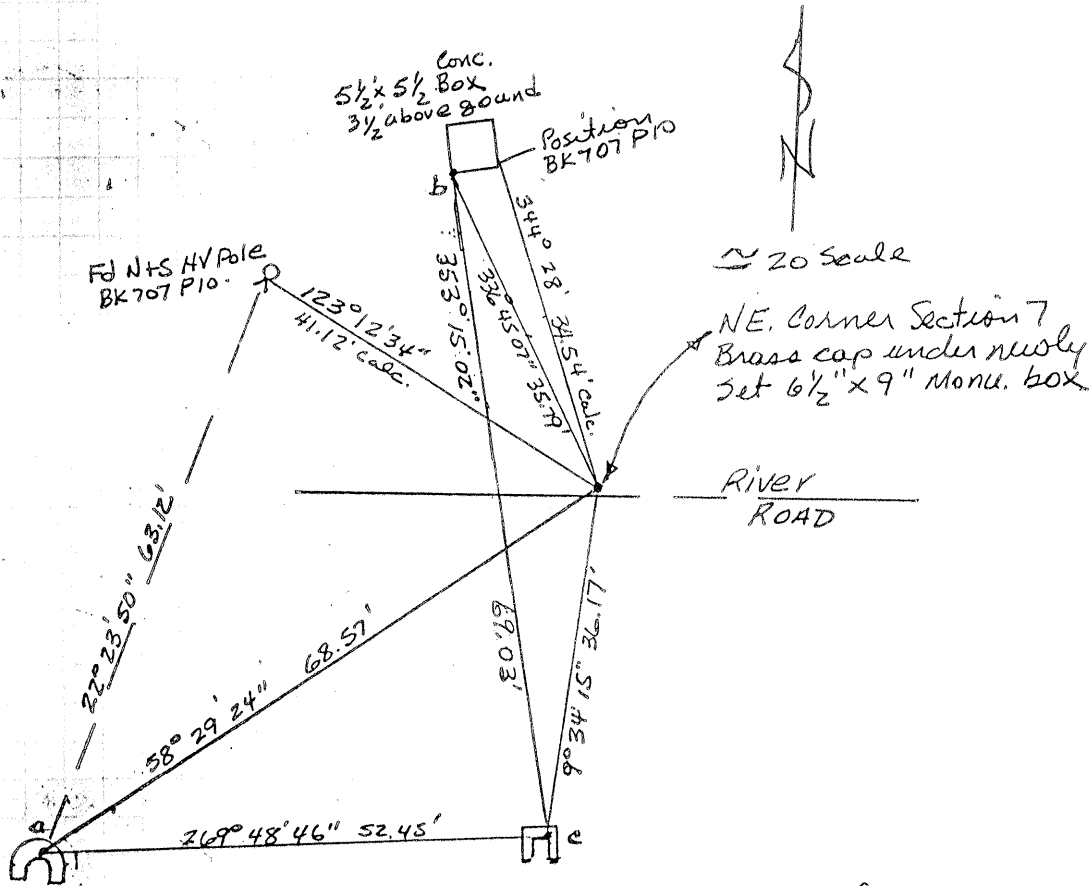
and examined and filed 2-7-05

Signed Roy L. Turney P.L.S. or R.C.E. No. 5523

Title DEP. CO. SURVEYOR



County Surveyor's Comment _____



a & c PK nail set concrete wall - can be occupied
 b PK set vert wall 3' below top concrete box
 Azm. angle are arbitrary

$2\frac{1}{2}$ " Brass Cap
 Stamping

