

CORNER RECORD

Agency Index 1396

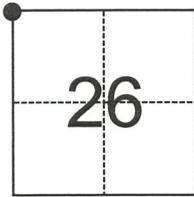
Document Number _____

City of N/A County of Merced, California

Brief Legal Description Northwest Corner Section 26, T.7S., R.15E., M.D.B.&M

CORNER TYPE

COORDINATES (Optional)



T.7S.
R.15E.
M.D.B.&M.

- Government Corner Control
 Meander Property
 Rancho Other

Date of Survey November 21, 2017

N. _____ E. _____

Elevation _____

Units Metric U.S. Survey Foot

Horizontal Datum _____

Zone _____ Epoch Date _____

Vertical Datum _____

Complies with Public Resources Code §§8801-8819

Complies with Public Resources Code §§8890-8902

PLS Act Ref.: 8765(d) 8771 8773 Other:

Corner/
Monument: Left as found Established Rebuilt Pre-Construction
 Found and tagged Reestablished Referenced Post-Construction

Narrative of corner identified and monument as found, set, reset, replaced, or removed:

See sheet #2 for description(s):

Found 3/4" iron pipe, down 10", set tag LS 7058. Set new ties.

SURVEYOR'S STATEMENT

This Corner Record was prepared by me or under my direction in conformance with

the Professional Land Surveyors' Act on June 28, 2018

Signed [Signature] P.L.S. No. 7058



COUNTY SURVEYOR'S STATEMENT

This Corner Record was received JULY 2ND, 2018

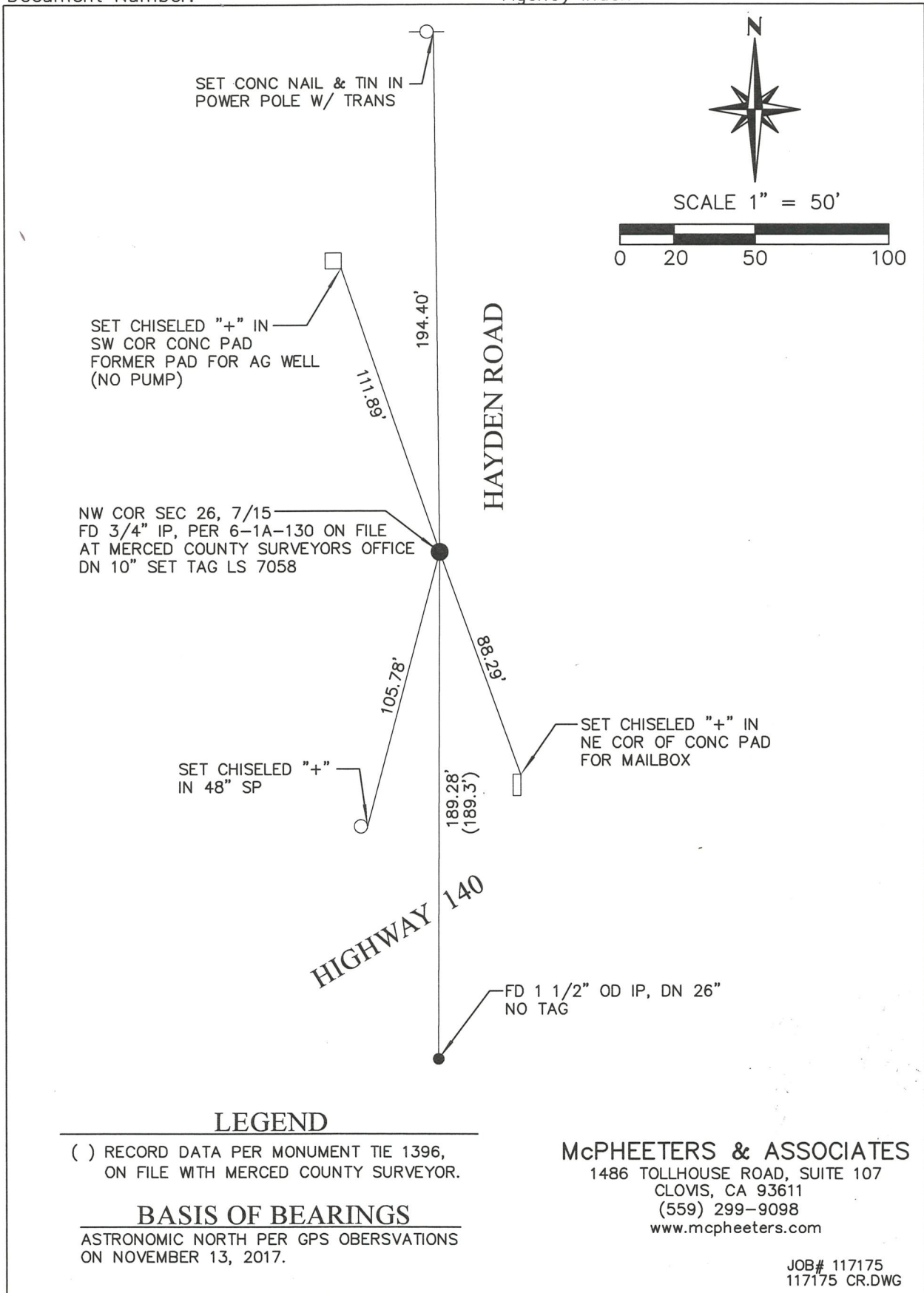
and examined and filed JULY 10TH, 2018

Signed Zach T. Janz P.L.S. or R.C.E. No. 8664

Title COUNTY SURVEYOR

County Surveyor's Comment





LEGEND

() RECORD DATA PER MONUMENT TIE 1396, ON FILE WITH MERCED COUNTY SURVEYOR.

BASIS OF BEARINGS

ASTRONOMIC NORTH PER GPS OBSERVATIONS ON NOVEMBER 13, 2017.

McPHEETERS & ASSOCIATES

1486 TOLLHOUSE ROAD, SUITE 107
CLOVIS, CA 93611
(559) 299-9098
www.mcpheeters.com

JOB# 117175
117175 CR.DWG