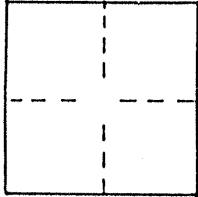


CORNER RECORD

COUNTY OF MERCED, CALIFORNIA

SECTION 24 & 25 TOWNSHIP 7 S. RANGE 13 E. M.D.B. & M.

BRIEF LEGAL DESCRIPTION: Parcel B of 50 PM 34



Section 24

Section 25

CORNER TYPE:

GOV'T CORNER CONTROL
MEANDER PROPERTY
RANCHO OTHER

COORDINATES

N. _____

ZONE _____

DATE OF SURVEY: 9/29/89

ELEV. _____

CORNER - LEFT AS FOUND FOUND AND TAGGED REESTABLISHED REBUILT

PHYSICAL DESCRIPTION OF CORNER FOUND: EVIDENCE USED TO IDENTIFY THE CORNER
Found monuments as shown in sketch per 50 PM 34.

PHYSICAL DESCRIPTION OF MONUMENTS REBUILT, PERPETUATED, OR RESET
Set 3/4-inch x 24-inch rebar tagged L.S. 5109 at all corners of Parcel B (50 PM 34), except as shown in sketch.

SURVEYOR'S STATEMENT

THIS CORNER RECORD WAS PREPARED BY ME OR UNDER MY DIRECTION IN CONFORMANCE WITH THE LAND SURVEYORS ACT ON October 6, 1989
SIGNED: Gerald D. Dishington
L.S. OR R.C.E. NO. L.S. 5109 EXPIRES 6-30-91



SEAL

COUNTY SURVEYOR'S STATEMENT

THIS CORNER RECORD WAS RECEIVED 10-16 1989
AND EXAMINED AND FILED OCT 17 1989
BY: Roy Turney
TITLE: Deputy County Surveyor

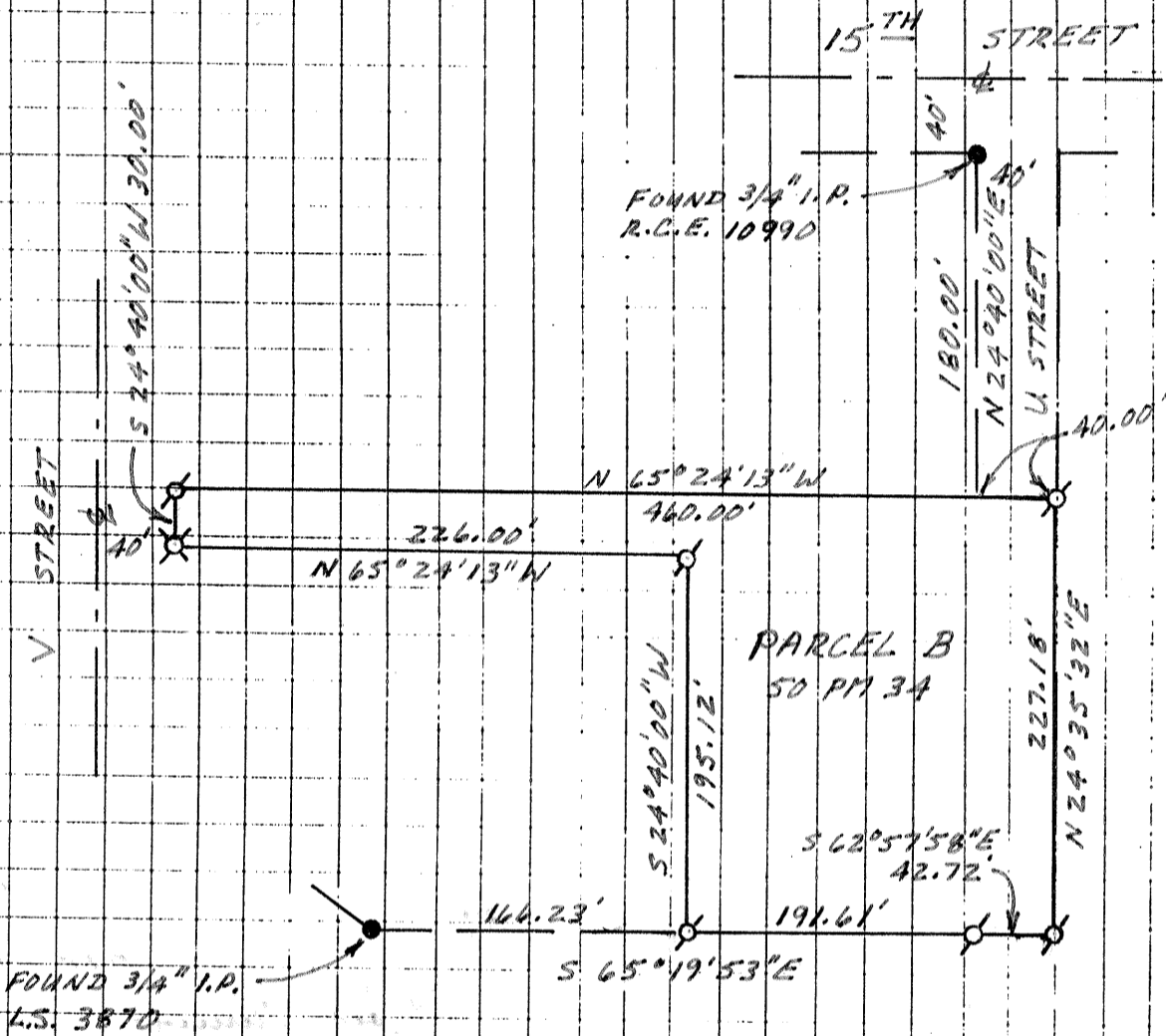


YES NO SKETCH ON BACK OF SHEET

COUNTY SURVEYOR'S STATEMENT: _____

CORNER RECORD

SKETCH (Include reference tie or witness points, remarks and topo of area)



LEGEND

- FOUND AS NOTED
- ⊕ SET 3/4" X 24" REBAR TAGGED L.S. 5109
- ⊗ SET SCRIBED "+" AT TOP BACK OF WALK

SCALE: 1" = 100'

880138