

CORNER RECORD

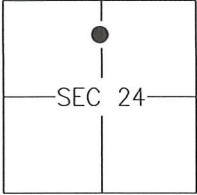
Agency Index 1370-QQQ

Document Number _____

City of MERCED

County of MERCED, California

Brief Legal Description LOTS 41, 43, 44, AND 103, PER 77 O.P. 40-51, M.C.R.



CORNER TYPE

- Government Corner Control
 Meander Property
 Rancho Other

Date of Survey 2019-04-01

COORDINATES (Optional)

- N. _____ E. _____
 Elevation _____
 Units Metric U.S. Survey Foot
 Horizontal Datum _____
 Zone _____ Epoch Date _____
 Vertical Datum: _____
 Complies with Public Resources Code §§8801-8819
 Complies with Public Resources Code §§8890-8902

PLS Act Ref.: 8765(d) 8771 8773 Other: _____

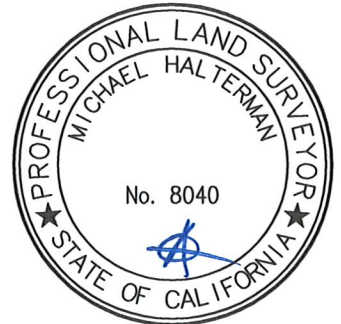
Corner/Monument: Left as found Established Rebuilt Pre-Construction
 Found and tagged Reestablished Referenced Post-Construction

Narrative of corner identified and monument as found and set or reset:

See sheet #2 for description(s):

SURVEYOR'S STATEMENT

This Corner Record was prepared by me or under my direction in conformance with the Land Surveyor's Act on 19 APRIL, 2019.
 Signed [Signature] P.L.S. or R.C.E. No.: 8040

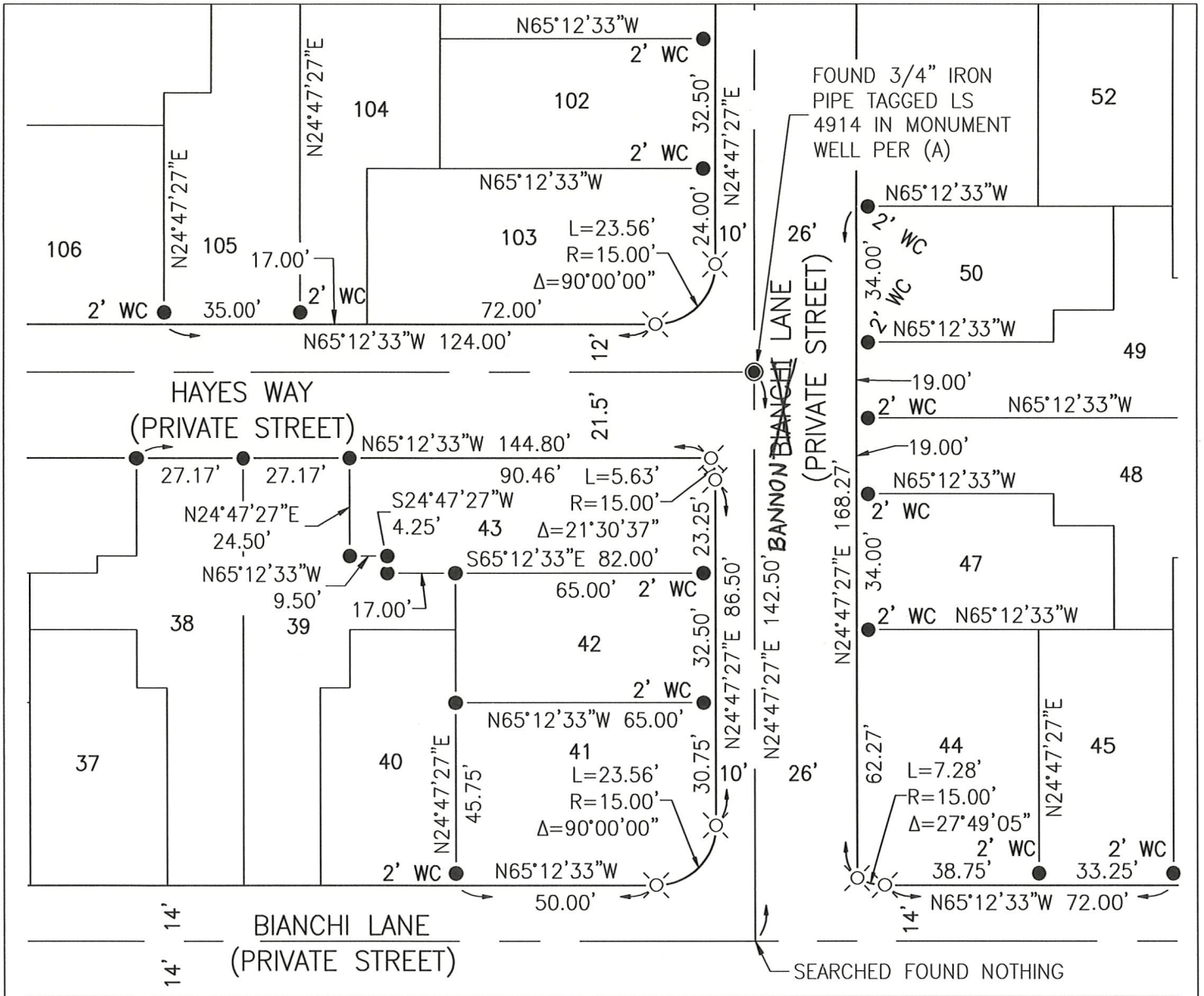


COUNTY SURVEYOR'S STATEMENT

This Corner Record was received APRIL 23, 2019 and examined and filed APRIL 23, 2019.
 Signed [Signature] P.L.S. or R.C.E. No.: 8664
 Title COUNTY SURVEYOR



County Surveyor's Comment _____



LEGEND

- NOTE: ALL PIPE SIZES ARE INSIDE DIAMETER
- FOUND 3/4" IRON PIPE, TAGGED LS 4914 PER (A), OR AS NOTED
 - ⊗ SET NAIL AND TAG, TAGGED LS 8040
 - WC WITNESS CORNER AT DISTANCE NOTED

REFERENCE

(A) AMENDING MAP OF TRACT NO. 5346, HIGHLAND PARK, BOOK 77 OF OFFICIAL PLATS, PAGES 40-51, M.C.R.

