

CORNER RECORD

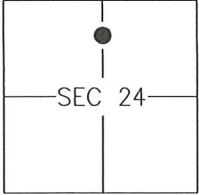
Agency Index 1370-PPP

Document Number _____

City of MERCED

County of MERCED, California

Brief Legal Description LOTS 93-95 AND COMMON USE AREA C PER 77-0P-40, M.C.R.



T7S/R13E

CORNER TYPE

- Government Corner Control
 Meander Property
 Rancho Other

Date of Survey 2019-04-01

COORDINATES (Optional)

- N. _____ E. _____
 Elevation _____
 Units Metric U.S. Survey Foot
 Horizontal Datum _____
 Zone _____ Epoch Date _____
 Vertical Datum: _____
 Complies with Public Resources Code §§8801-8819
 Complies with Public Resources Code §§8890-8902

PLS Act Ref.: 8765(d) 8771 8773 Other: _____

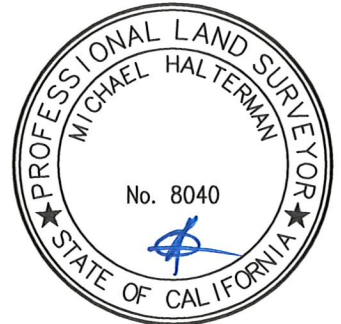
Corner/Monument: Left as found Established Rebuilt Pre-Construction
 Found and tagged Reestablished Referenced Post-Construction

Narrative of corner identified and monument as found and set or reset:

See sheet #2 for description(s):

SURVEYOR'S STATEMENT

This Corner Record was prepared by me or under my direction in conformance with the Land Surveyor's Act on 19 APRIL, 2019.
 Signed [Signature] P.L.S. or R.C.E. No.: 8040



COUNTY SURVEYOR'S STATEMENT

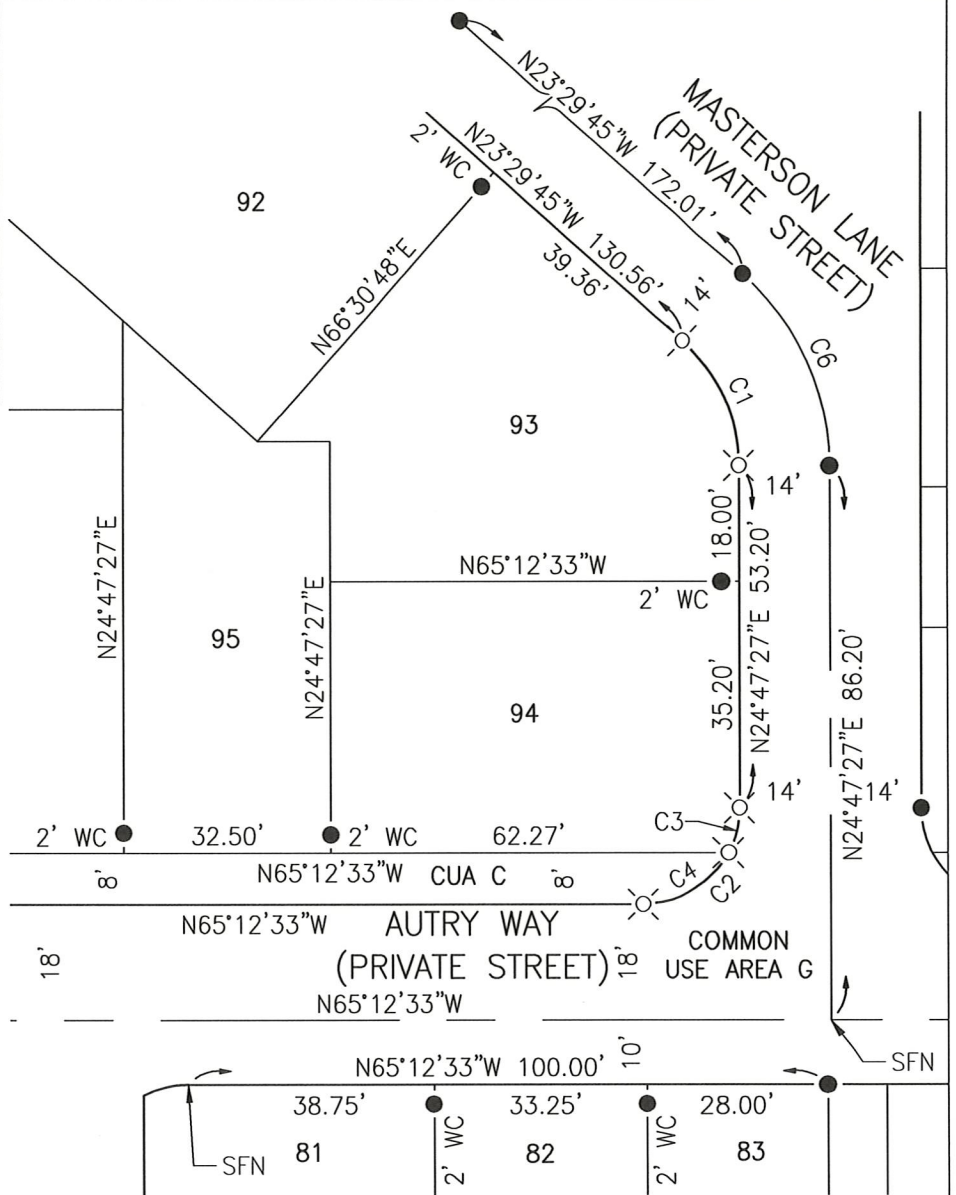
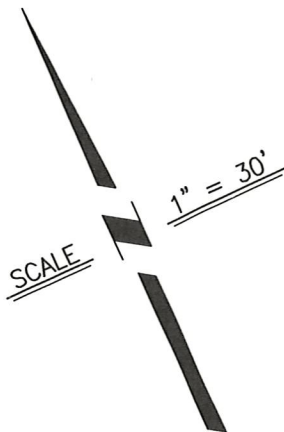
This Corner Record was received APRIL 23, 2019 and examined and filed APRIL 23, 2019.

Signed [Signature] P.L.S. or R.C.E. No.: 8664
 Title COUNTY SURVEYOR



County Surveyor's Comment _____

CURVE DATA TABLE			
CURVE	DELTA	RADIUS	LENGTH
C1	48°17'12"	26.00'	21.91'
C2	90°00'00"	15.00'	23.56'
C3	27°49'05"	15.00'	7.28'
C4	62°10'55"	15.00'	16.28'
C6	48°17'12"	40.00'	33.71'



REFERENCE

(A) AMENDING MAP OF TRACT NO. 5346, HIGHLAND PARK, BOOK 77 OF OFFICIAL PLATS, PAGES 40-51, M.C.R.

LEGEND

NOTE: ALL PIPE SIZES ARE INSIDE DIAMETER

● FOUND 3/4" IRON PIPE, TAGGED LS 4914 PER (A), OR AS NOTED

○ SET NAIL WITH BRASS TAG STAMPED LS 8040 IN CONCRETE

⊙ WITNESS CORNER

WC SEARCHED FOUND NOTHING

SFN