

# CORNER RECORD

Document Number 1370-EEE

City of MERCED

County of MERCED, California

Brief Legal Description NORTHWEST CORNER BLOCK 180 OF MONDO ADDITION, VL 11 O.P., PG 35, M.C.R.



### CORNER TYPE

Government Corner  Control   
 Meander  Property   
 Rancho  Other

Date of Survey MAY 10, 2016

### COORDINATES (Optional)

N. \_\_\_\_\_  
 E. \_\_\_\_\_  
 Zone \_\_\_\_\_ NAD27  NAD83   
 NAD83 Epoch \_\_\_\_\_  
 Elev. \_\_\_\_\_  
 Vert. Datum: NGVD29  NADV88   
 Meas. Units: Metric  Imperial

Corner - Left as found  Found and tagged  Established  Reestablished  Rebuilt

### Identification and type of corner found. Evidence used to identify or procedure used to establish or reestablish the corner:

FOUND 3/4" IRON ROD, NO TAG, Down 0.5', BENT. POSITION AND CHARACTER OF MONUMENT MATCH RECORD ACCORDING TO MAP OF MONDO ADDITION FILED IN VOLUME 11 OF OFFICIAL PLATS, PAGE 35, M.C.R.

### A description of the physical condition of the monument as found and as set or reset:

LEFT AS FOUND. SET TIES TO PERPETUATE POSITION. TIES ARE SHOWN ON SHEET 2.

### SURVEYOR'S STATEMENT

This Corner Record was prepared by me or under my direction in conformance with the Land Surveyor's Act on JUNE 10, 2016.

Signed [Signature] P.L.S. or R.C.E. No.: PLS 8469



### COUNTY SURVEYOR'S STATEMENT

This Corner Record was received MAY 11, 2016 and examined and filed JUNE 21, 2016.

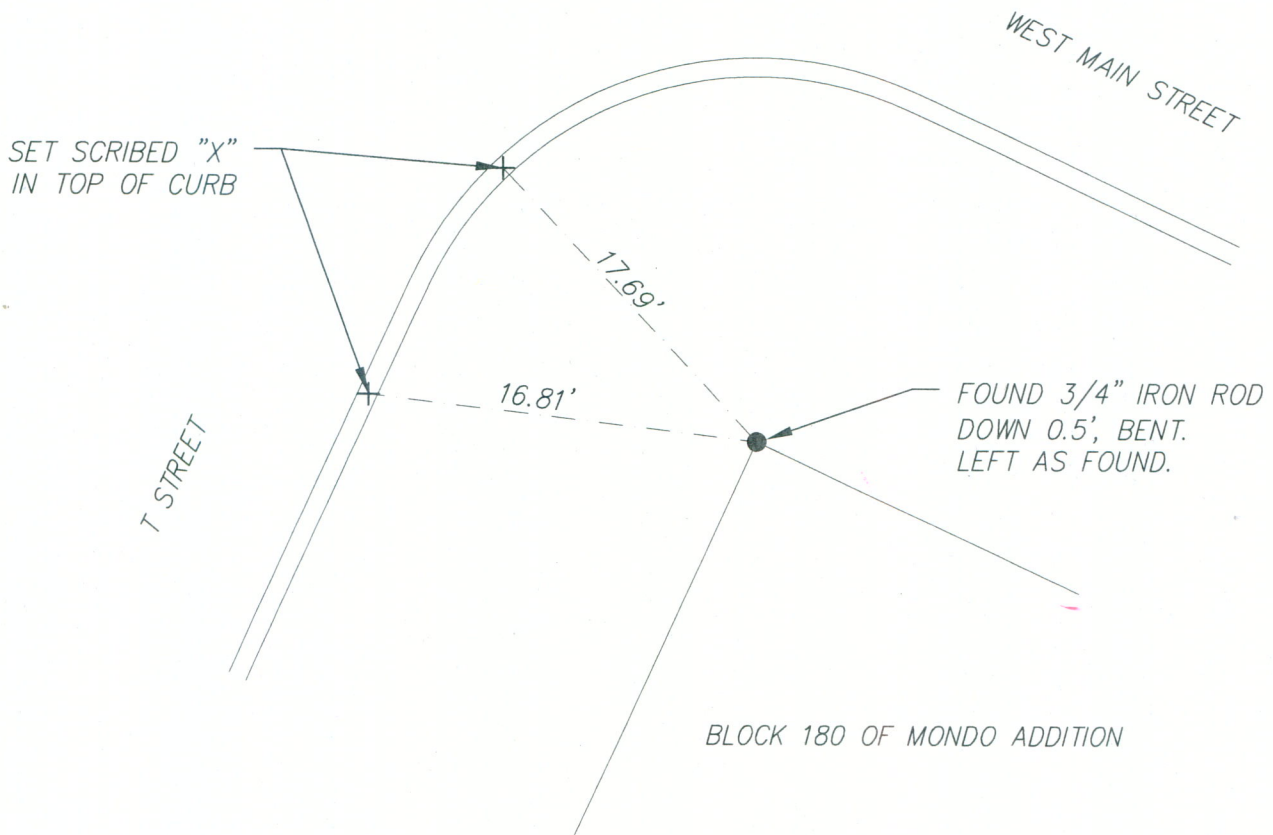
Signed [Signature] P.L.S. or R.C.E. No.: 8664

Title COUNTY SURVEYOR

County Surveyor's Comment \_\_\_\_\_



NORTHWEST CORNER BLOCK 180 OF MONDO ADDITION



N.T.S.