

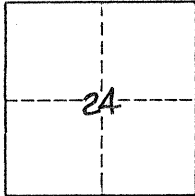
CORNER RECORD

COUNTY OF MERCED, CALIFORNIA

BRIEF LEGAL: Lot 52 "MAP OF JACKSON PARK ADDITION"

11 O.P. 21, M.C.R.

CITY OF MERCED



T.7S., R.13E.

CORNER TYPE:

COORDINATES

GOV'T CORNER CONTROL N. _____
 MEANDER PROPERTY E. _____
 RANCHO OTHER ZONE _____

DATE OF SURVEY: 8-9-85 ELEV _____

CORNER - LEFT AS FOUND FOUND AND TAGGED REESTABLISHED REBUILT

PHYSICAL DESCRIPTION OF CORNER FOUND: EVIDENCE USED TO IDENTIFY THE CORNER _____

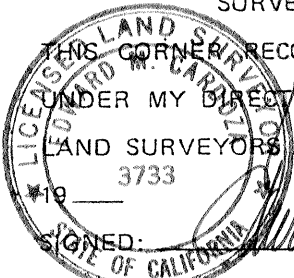
SEE OTHER SIDE.

PHYSICAL DESCRIPTION OF MONUMENTS REBUILT, PERPETUATED, OR RESET _____

SEE OTHER SIDE

SURVEYOR'S CERTIFICATE

COUNTY SURVEYOR'S CERTIFICATE



THIS CORNER RECORD WAS PREPARED BY ME OR UNDER MY DIRECTION IN CONFORMANCE WITH THE LAND SURVEYORS ACT ON 9-26-85

SIGNED: _____
 L.S. OR P.E. NO.: 3733

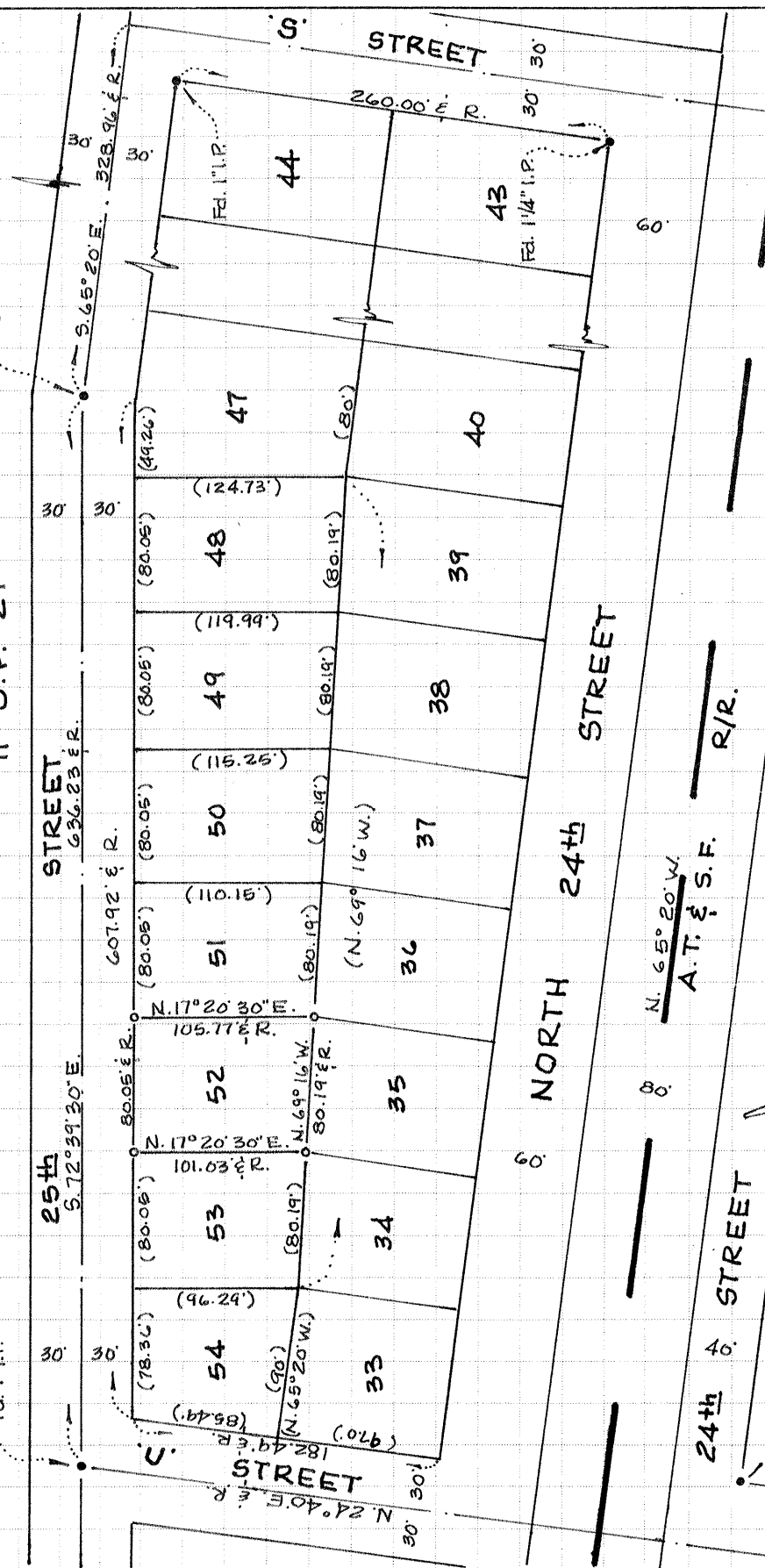
THIS CORNER RECORD WAS RECEIVED 10-16-85 19 85
 AND EXAMINED AND FILED 10-17- 19 85

BY: Ray L. Turner
 TITLE: Deputy Co. Surveyor

COUNTY SURVEYOR'S STATEMENT: _____

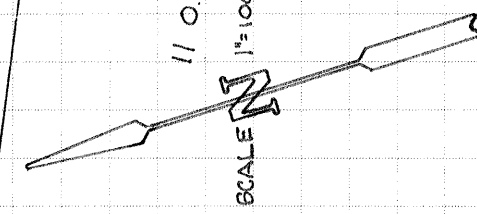
BEDESEN-CARDOZ IDREWS, L.L.C.
 Civil Engineering & Surveying
 301 W. 18th St. Merced, Calif. 95340
 722-8042

MAP OF JACKSON PARK ADDITION
 11 O.P. 21



- Fd. mon. as noted
- o Set 3/4" I.P. L.S. 3733
- R= Record
- () Record data
 11 O.P. 21, M.C.R.

Note: All found monuments,
 added tag L.S. 3733.
 South Corners were
 established on lot 52
 from record angles as
 calculated from subdivision
 map



OWNER:
 Betty Anderson