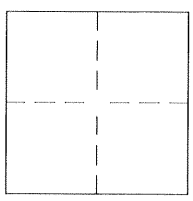


CORNER RECORD

Document Number 1370-BBB

City of MERCED County of MERCED, California

Brief Legal Description WITNESS CORNER TO THE NORTHWESTERLY INTERSECTION OF R/W OF "T" + 16th



CORNER TYPE

Government Corner Control
Meander Property
Rancho Other
Date of Survey 10-10-96

COORDINATES (Optional)

N. _____
E. _____
Zone _____ Datum _____
Elev. _____

Corner- Left as found Found and tagged Established Reestablished Rebuilt

Identification and type of corner found: Evidence used to identify or procedure used to establish the corner:
WITNESS CORNER TO THE NORTHWESTERLY INTERSECTION OF THE RIGHT-OF-WAY OF "T"
AND 16th STREETS PER BOOK 2 OF RECORD OF SURVEYS AT PAGE 71. M.C.R.

A description of the physical condition of the monument as found and as set or reset:
FOUND CROSS (+) CUT IN SIDEWALK. DESTROYED BY STREET CONSTRUCTION
SET NEW 1-1/2" IRON PIPE IN MONUMENT WELL TAGGED "LS 5503"

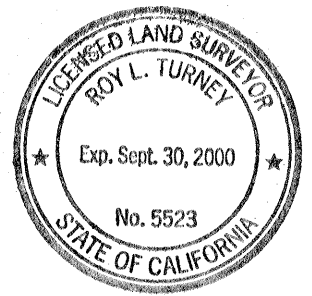
SURVEYOR'S STATEMENT

This Corner Record was prepared by me or under my direction in conformance with the Land Surveyors' Act on OCTOBER 11 19 96.
Signed *Cris H. Robles* L.S. or R.C.E. Number L.S. 5503

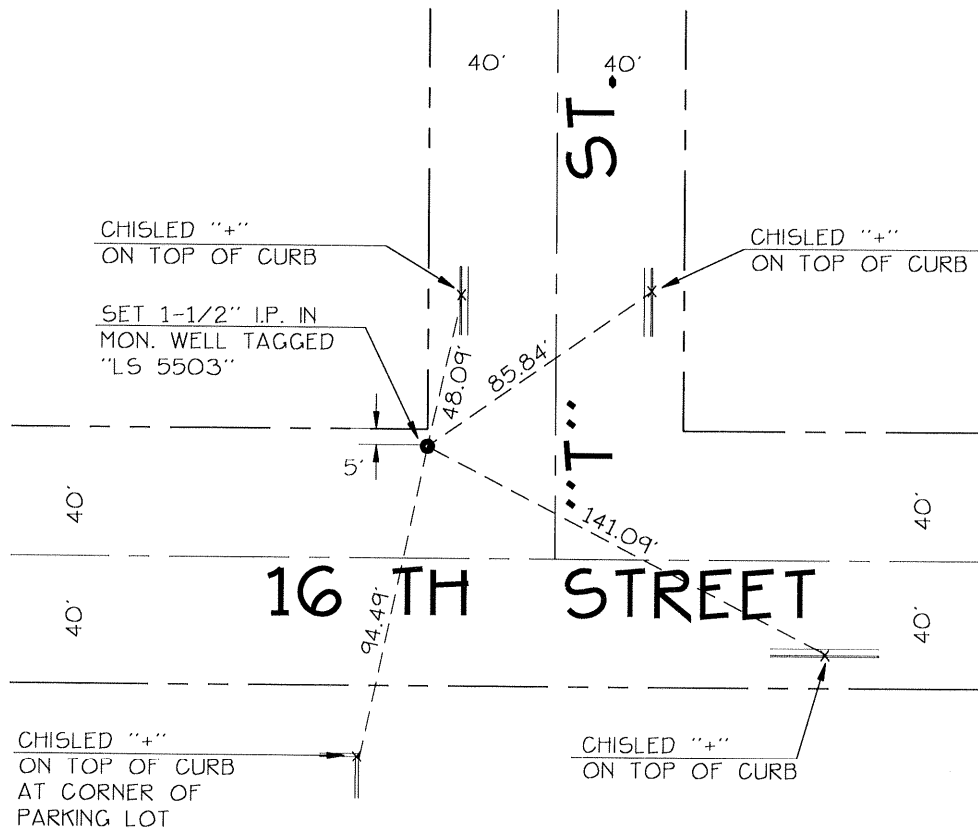


COUNTY SURVEYOR'S STATEMENT

This Corner Record was received Nov 19 96 and examined and filed Nov 18 19 96.
Signed *Roy L. Turney* Title DEP. CO. SUR.



County Surveyor's Comment _____



U.S. RENTALS

