

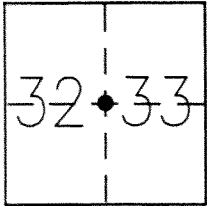
CORNER RECORD

Document Number 1362{3}

City of _____

County of MERCED, California

Brief Legal Description 1/4 CORNER COMMON TO SECTIONS 32 AND 33, TOWNSHIP 7 SOUTH, RANGE 13 EAST



CORNER TYPE

Government Corner Control
Meander Property
Rancho Other
Date of Survey MARCH 12, 2013

COORDINATES (Optional)

N. _____
E. _____
Zone _____ NAD27 NAD83
NAD83 Epoch _____
Elev. _____
Vert. Datum: NGVD29 NAVD88
Meas. Units: Metric Imperial

Corner - Left as found Found and tagged Established Reestablished Rebuilt

Identification and type of corner found: Evidence used to identify or procedure used to establish or reestablish the corner:
FOUND 1" IRON PIPE TAGGED "MERCED CO. SURVEYOR". VERIFIED TIES PER CORNER RECORD 1362. DATED 1-04-08.
ACCEPTED AS 1/4 CORNER COMMON TO SECTIONS 32 AND 33. TOWNSHIP 7 SOUTH, RANGE 13 EAST.
EXISTING TIES IN GOOD CONDITION. MONUMENT WILL LIKELY BE DESTROYED BY OVERLAY OF GURR ROAD.

A description of the physical condition of the monument as found and as set or reset: SEE PAGE 2

SURVEYOR'S STATEMENT

This Corner Record was prepared by me or under my direction in conformance with the Land Surveyor's Act on July 9, 2013

Signed [Signature] P.L.S or ~~REG.~~ No. 4895



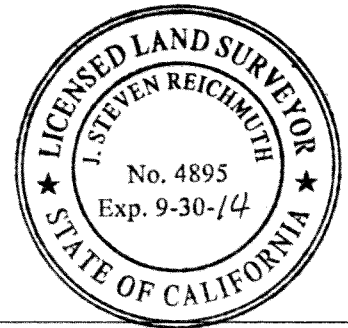
COUNTY SURVEYOR'S STATEMENT

This Corner Record was received July 9, 2013

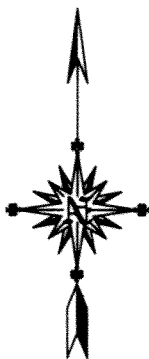
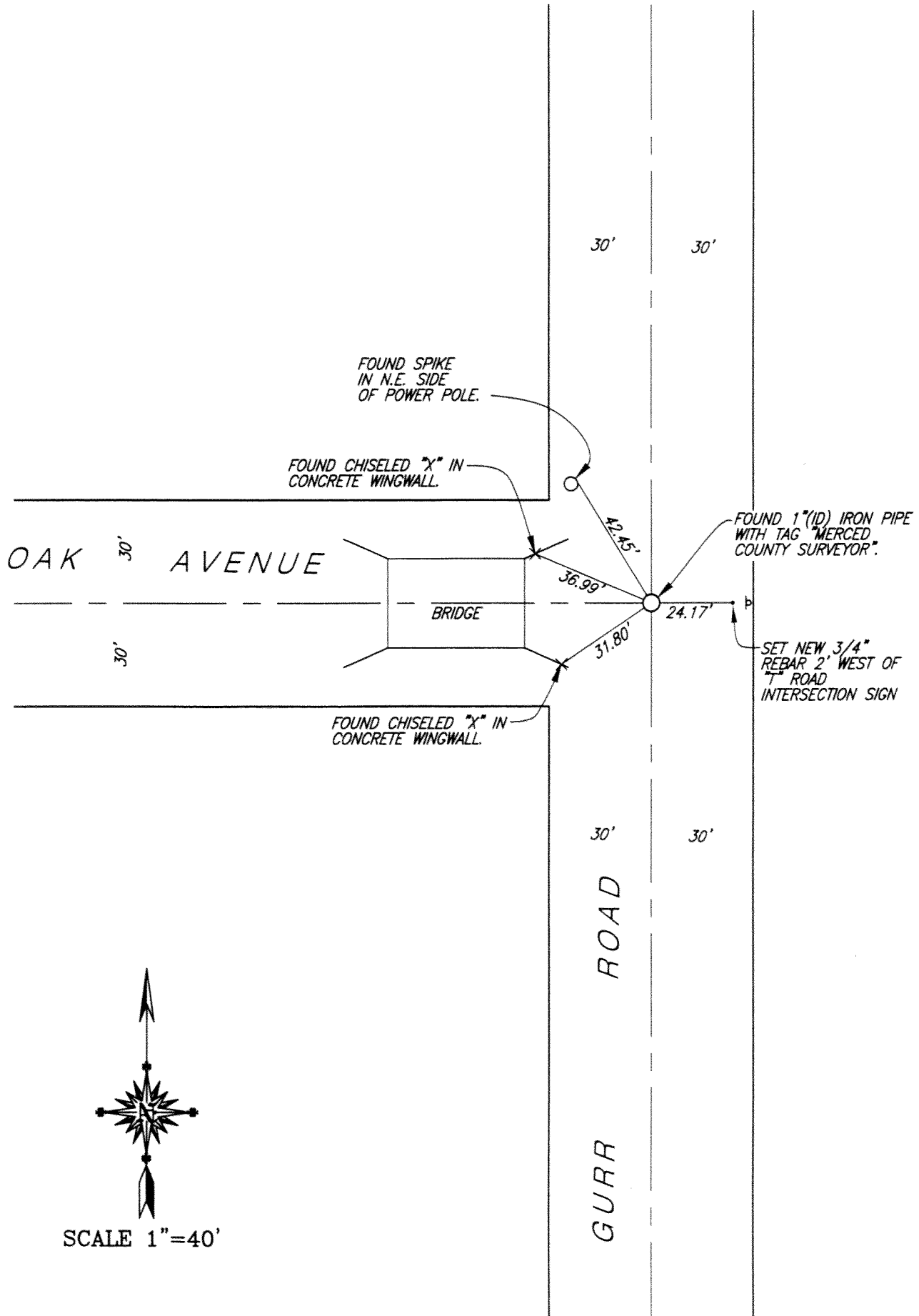
and examined and filed July 9, 2013

Signed [Signature] P.L.S or ~~REG.~~ No. 4895

Title County Surveyor



County Surveyor's Comment _____



SCALE 1"=40'