

CORNER RECORD

Agency Index 1360-JJ

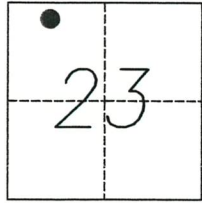
Document Number _____

City of MERCED County of MERCED, California

Brief Legal Description WEST LINE OF PARCEL A 72-P.M.-20

CORNER TYPE

COORDINATES (Optional)



Government Corner Control
Meander Property
Rancho Other

Date of Survey 04-10-2017

N. _____ E. _____

Elevation _____

Units Metric U.S. Survey Foot

Horizontal Datum _____

Zone _____ Epoch Date _____

Vertical Datum _____

Complies with Public Resources Code §§8801-8819

Complies with Public Resources Code §§8890-8902

PLS Act Ref.: 8765(d) 8771 8773 Other:

Corner/Monument: Left as found Established Rebuilt Pre-Construction

Found and tagged Reestablished Referenced Post-Construction

Narrative of corner identified and monument as found, set, reset, replaced, or removed:

See sheet #2 for description(s):

SURVEYOR'S STATEMENT

This Corner Record was prepared by me or under my direction in conformance with

the Professional Land Surveyors' Act on April 13, 2017

Signed [Signature] P.L.S. or R.C.E. No. 7825



COUNTY SURVEYOR'S STATEMENT

This Corner Record was received JUNE 1, 2018

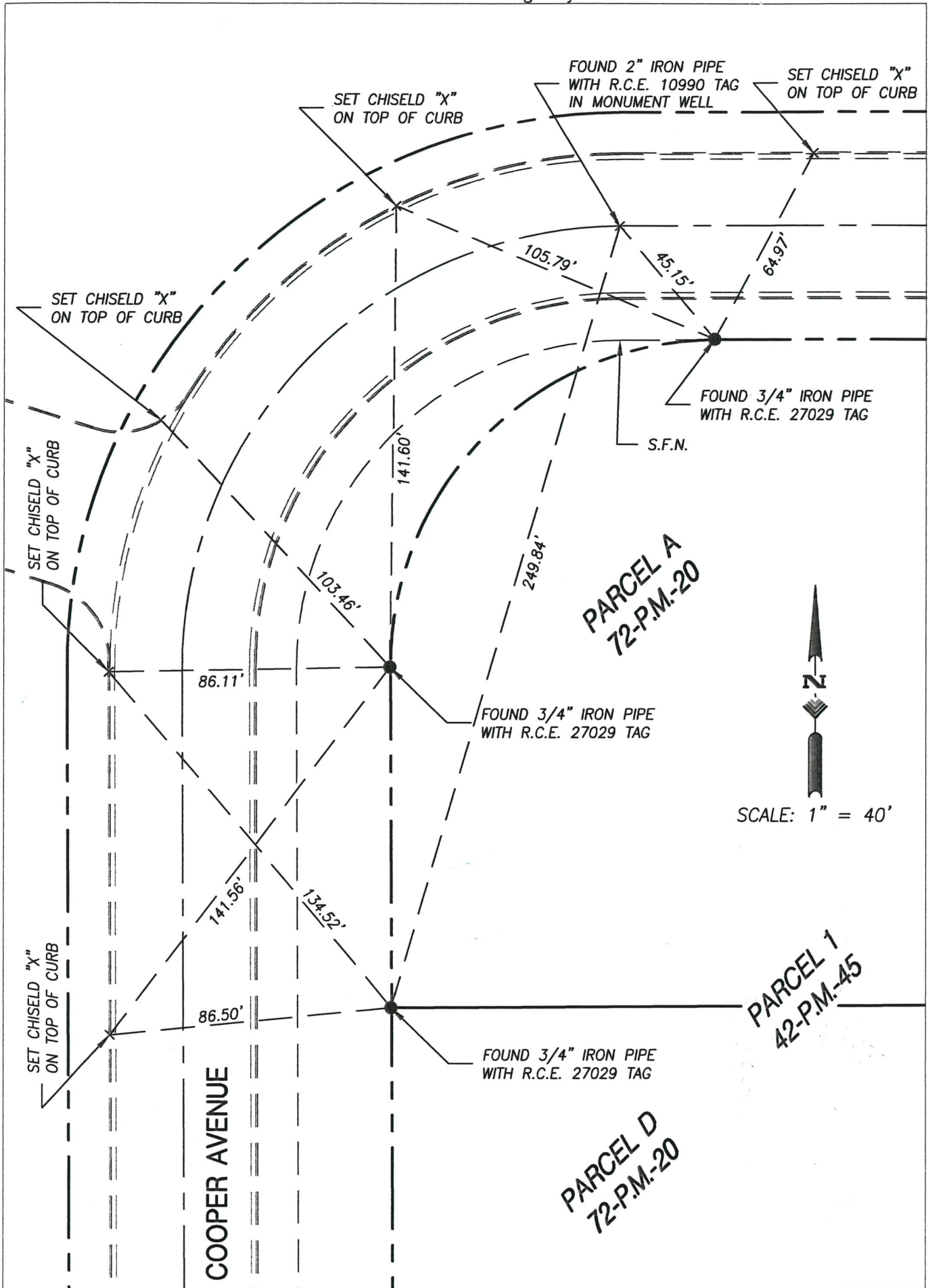
and examined and filed JUNE 26, 2018

Signed Zach T. Janz P.L.S. or R.C.E. No. 8664

Title COUNTY SURVEYOR

County Surveyor's Comment





SCALE: 1" = 40'