

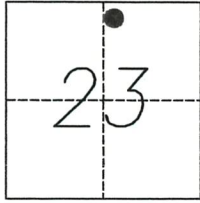
CORNER RECORD

Agency Index 1360-FF

Document Number _____

City of MERCED County of MERCED, California

Brief Legal Description NORTHEAST CORNER OF PARCEL 1 26-P.M.-03



CORNER TYPE

- Government Corner Control
- Meander Property
- Rancho Other

Date of Survey 04-10-2017

COORDINATES (Optional)

N. _____ E. _____

Elevation _____

Units Metric U.S. Survey Foot

Horizontal Datum _____

Zone _____ Epoch Date _____

Vertical Datum _____

Complies with Public Resources Code §§8801-8819

Complies with Public Resources Code §§8890-8902

PLS Act Ref.: 8765(d) 8771 8773 Other:

Corner/Monument: Left as found Established Rebuilt Pre-Construction

Found and tagged Reestablished Referenced Post-Construction

Narrative of corner identified and monument as found, set, reset, replaced, or removed:

See sheet #2 for description(s):

SURVEYOR'S STATEMENT

This Corner Record was prepared by me or under my direction in conformance with

the Professional Land Surveyors' Act on April 13, 2017

Signed [Signature] P.L.S. or R.C.E. No. 7025



COUNTY SURVEYOR'S STATEMENT

This Corner Record was received JUNE 1, 2018

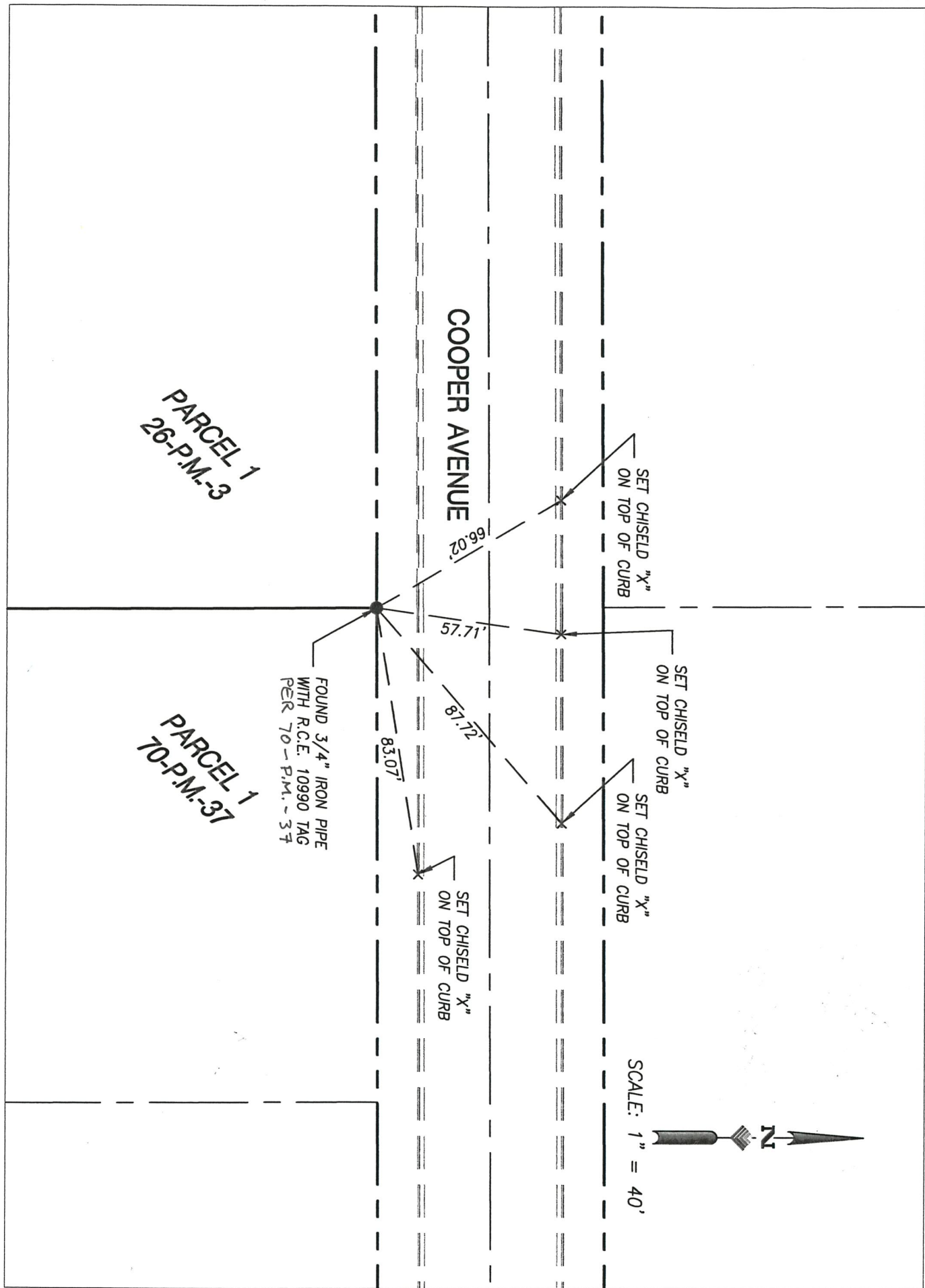
and examined and filed JUNE 26, 2018

Signed Zachary T. Janz P.L.S. or R.C.E. No. 8664

Title COUNTY SURVEYOR

County Surveyor's Comment





PARCEL 1
26-P.M.-3

PARCEL 1
70-P.M.-37

COOPER AVENUE

FOUND 3/4" IRON PIPE
WITH R.C.E. 10990 TAG
PER 70-P.M.-37

SET CHISELED "X"
ON TOP OF CURB

SET CHISELED "X"
ON TOP OF CURB

SET CHISELED "X"
ON TOP OF CURB

SET CHISELED "X"
ON TOP OF CURB

SCALE: 1" = 40'

