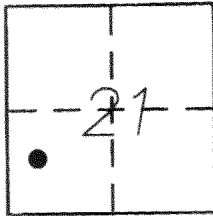


CORNER RECORD

Document Number 1356-ZZ
County of MERCED, California

City of MERCED

Brief Legal Description NORTH WEST CORNER OF LOT 16 OF GARDEN ACRES, 8 O.P. 23, M.C.R.



T7S, R14E

CORNER TYPE

Government Corner Control
Meander Property
Rancho Other
Date of Survey 9-24-2012

COORDINATES (Optional)

N. _____
E. _____
Zone NAD27 NAD83
NAD83 Epoch _____
Elev. _____
Vert. Datum: NGVD29 NAVD88
Meas. Units: Metric Imperial

Corner - Left as found Found and tagged Established Reestablished Rebuilt

Identification and type of corner found: Evidence used to identify or procedure used to establish or reestablish the corner:

ALUMINUM CAP STAMPED L.S. 7621, AT SURFACE OF PAVEMENT AS SHOWN ON
RECORD OF SURVEY FOR CITY OF MERCED, 46 R.S. 28, M.C.R.
MONUMENT WAS DESTROYED WITH CONSTRUCTION PROJECT.

A description of the physical condition of the monument as found and as set or reset:

SET 3/4" IRON PIPE WITH ALUMINUM CAP STAMPED L.S. 7621, AT SURFACE OF PAVEMENT.
PER CORNER RECORD 1356-ZZ FILED JUNE 12, 2012.

SURVEYOR'S STATEMENT

This Corner Record was prepared by me or under my direction in conformance with

the Land Surveyor's Act on SEPTEMBER 24, 2012

Signed David D. Heinrich P.L.S or R.G.E. No. 7621



COUNTY SURVEYOR'S STATEMENT

This Corner Record was received September 26, 2012

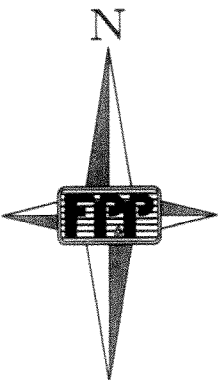
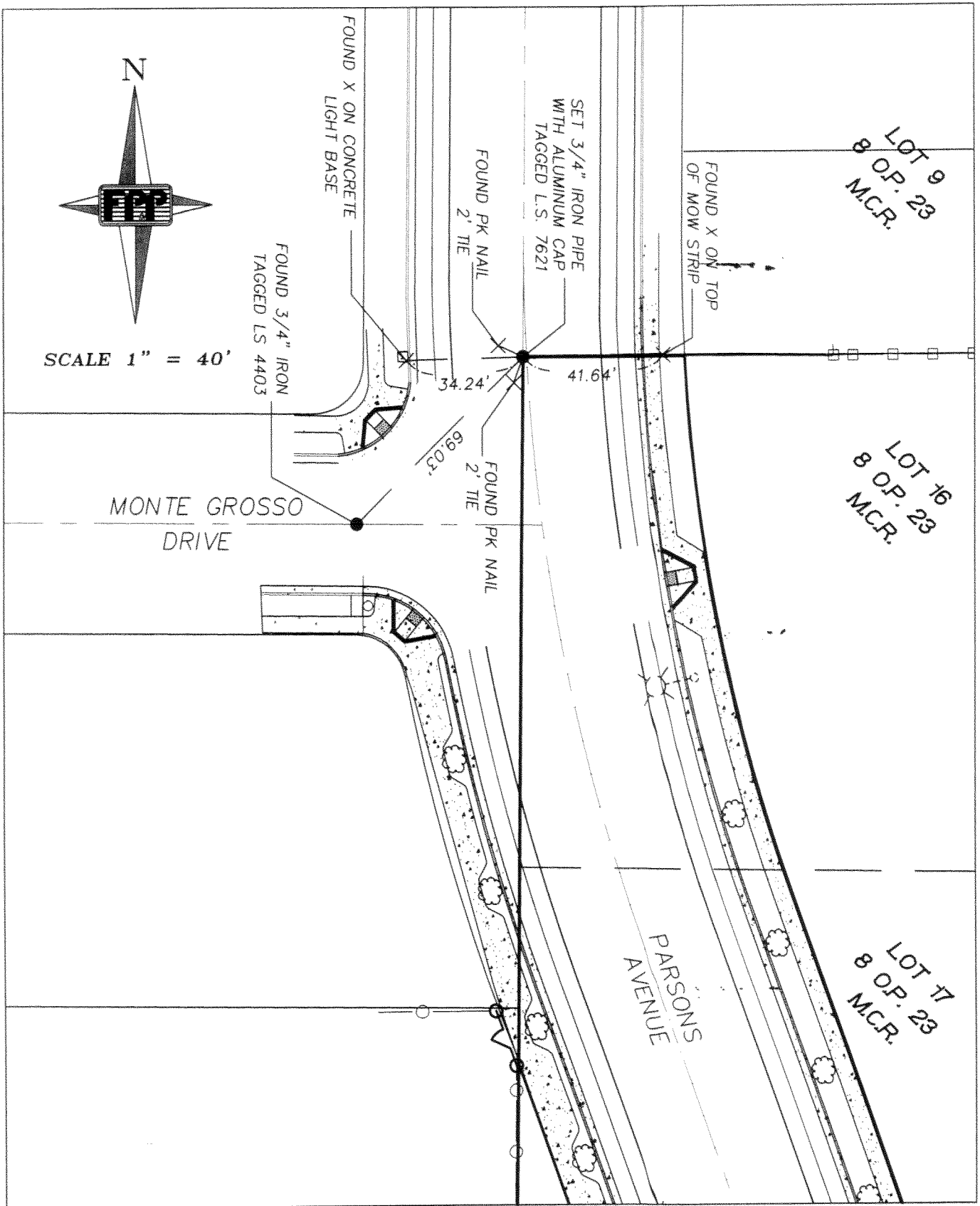
and examined and filed October 1, 2012

Signed J. Steven Reichmuth P.L.S or R.G.E. No. 4895

Title Acting County Surveyor

County Surveyor's Comment _____





SCALE 1" = 40'

LOT 9
8 O.P. 23
M.C.R.

LOT 16
8 O.P. 23
M.C.R.

LOT 17
8 O.P. 23
M.C.R.

FOUND X ON CONCRETE
LIGHT BASE

FOUND 3/4" IRON
TAGGED LS 4403

SET 3/4" IRON PIPE
WITH ALUMINUM CAP
TAGGED L.S. 7621

FOUND PK NAIL
2' TIE

FOUND X ON TOP
OF MOW STRIP

34.24'

41.64'

69.03'

FOUND PK NAIL
2' TIE

MONTE GROSSO
DRIVE

PARSONS
AVENUE