

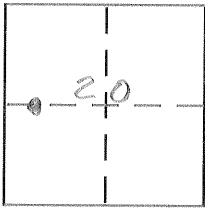
**CORNER RECORD**

Document Number 1355-0000

City of Merced

County of Merced, California

Brief Legal Description Lot 37 Bear Creek Estates I.D.P. 10, M.C.R.



**CORNER TYPE**

Government Corner  Control   
Meander  Property   
Rancho  Other   
Date of Survey 7-26-2006

**COORDINATES (Optional)**

N. \_\_\_\_\_  
E. \_\_\_\_\_  
Zone \_\_\_\_\_ NAD27  NAD83   
NAD83 Epoch \_\_\_\_\_  
Elev. \_\_\_\_\_  
Vert. Datum: NGVD29  NAVD88   
Meas. Units: Metric  Imperial

Corner - Left as found  Found and tagged  Established  Reestablished  Rebuilt

Identification and type of corner found: Evidence used to identify or procedure used to establish or reestablish the corner:

See sketch

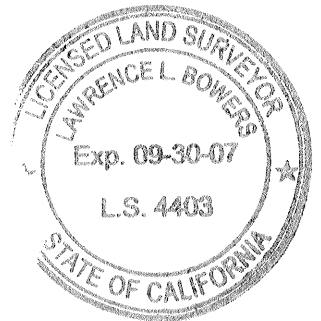
A description of the physical condition of the monument as found and as set or reset:

See sketch

**SURVEYOR'S STATEMENT**

This Corner Record was prepared by me or under my direction in conformance with the Land Surveyor's Act on 8-30-06

Signed [Signature] P.L.S. or R.C.E. No. \_\_\_\_\_



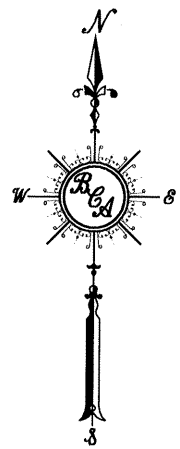
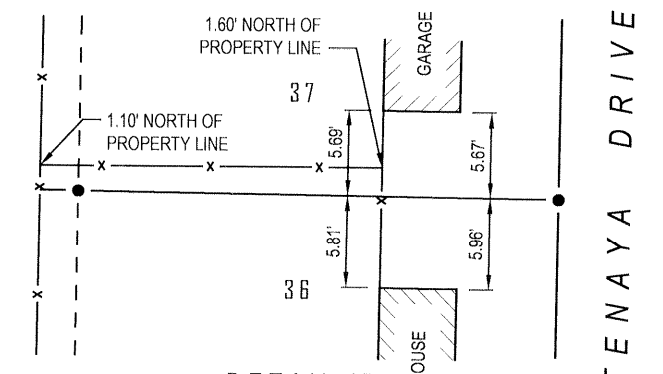
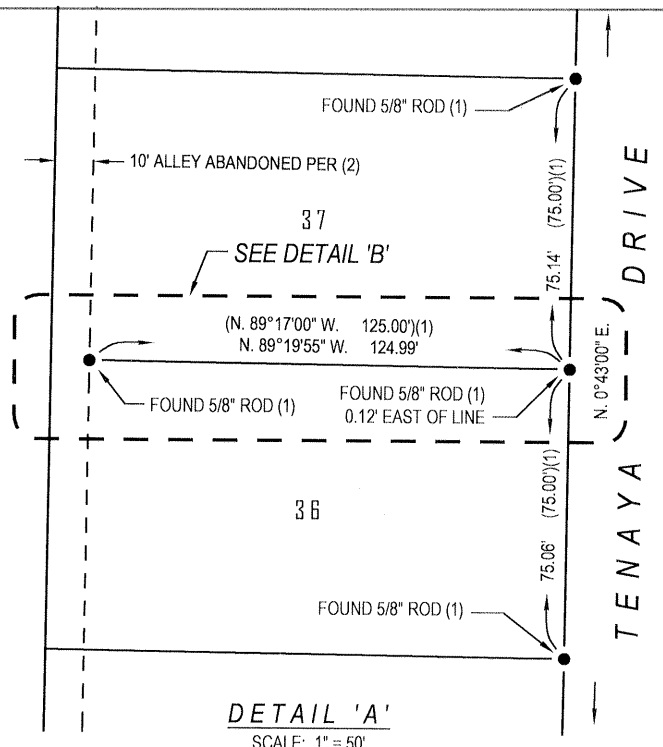
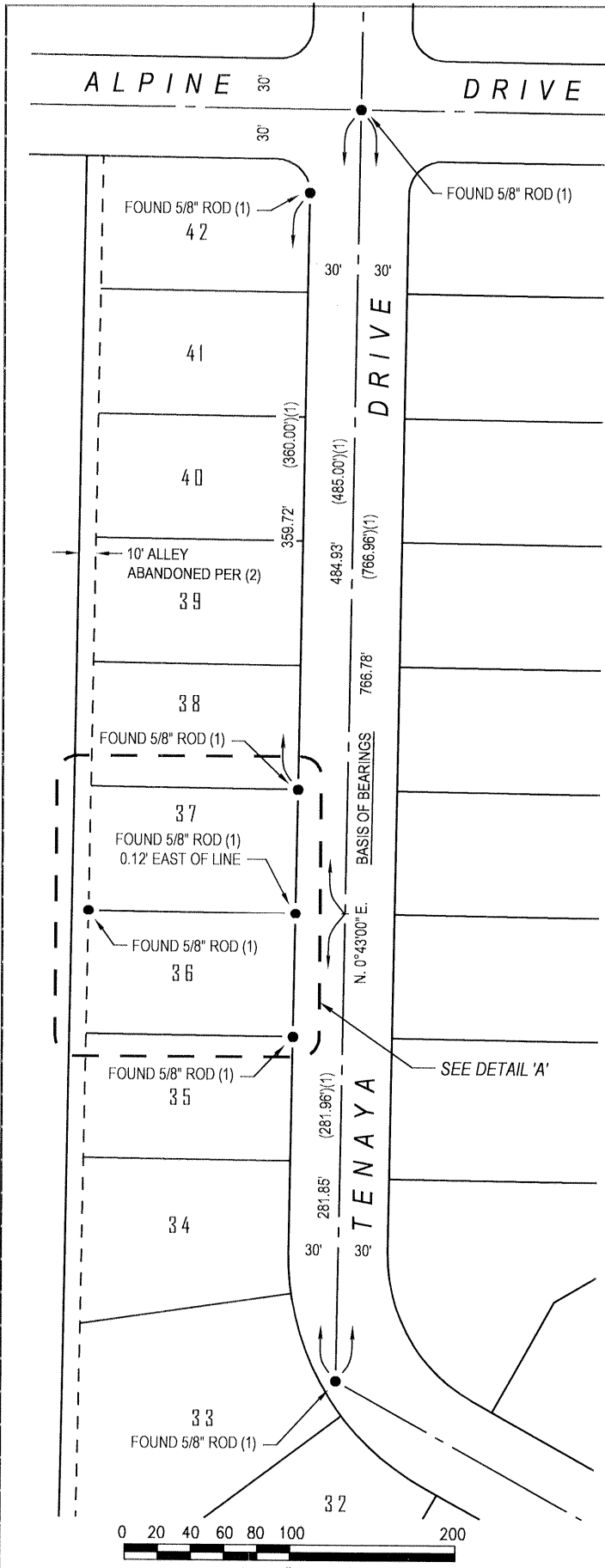
**COUNTY SURVEYOR'S STATEMENT**

This Corner Record was received August 30, 2006 and examined and filed September 1, 2006

Signed [Signature] P.L.S. or R.C.E. No. 4895  
Title Dep. County Surveyor



County Surveyor's Comment \_\_\_\_\_



**LEGEND**  
 ● FOUND AND ACCEPTED MONUMENT AS INDICATED  
 —x— FENCELINE

**REFERENCE:**  
 (1) MAP OF BEAR CREEK ESTATES, 14 O.P. 10, M.C.R.  
 (2) BOARD OF SUPERVISORS CORRECTED RESOLUTION  
 No. 612-1958, VOLUME 1367, PAGE 143

