

**CORNER RECORD**

Document Number 1353 - YKY

City of Merced

County of Merced, California

Brief Legal Description Lot 30 Yosemite Manor 10 O.P. 19, M.C.R.



7/14

**CORNER TYPE**

Government Corner  Control   
Meander  Property   
Rancho  Other   
Date of Survey 5-22-06

**COORDINATES (Optional)**

N. \_\_\_\_\_  
E. \_\_\_\_\_  
Zone \_\_\_\_\_ NAD27  NAD83   
NAD83 Epoch \_\_\_\_\_  
Elev. \_\_\_\_\_  
Vert. Datum: NGVD29  NAVD88   
Meas. Units: Metric  Imperial

Corner - Left as found  Found and tagged  Established  Reestablished  Rebuilt

Identification and type of corner found: Evidence used to identify or procedure used to establish or reestablish the corner:

See sketch

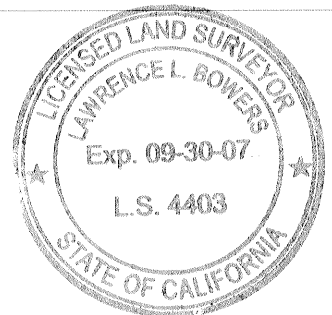
A description of the physical condition of the monument as found and as set or reset:

See sketch

**SURVEYOR'S STATEMENT**

This Corner Record was prepared by me or under my direction in conformance with the Land Surveyor's Act on 8-30-06

Signed [Signature] P.L.S or P.C.E. No. \_\_\_\_\_



**COUNTY SURVEYOR'S STATEMENT**

This Corner Record was received August 30, 2006

and examined and filed September 1, 2006

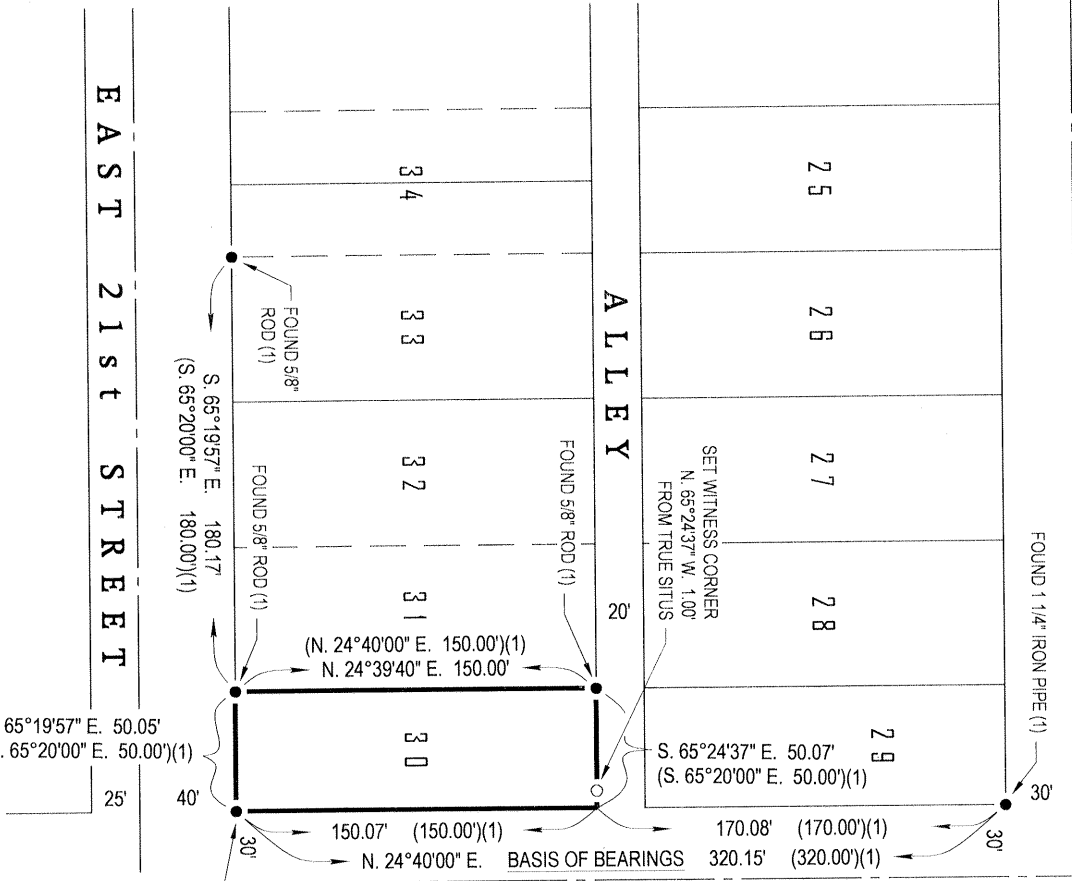
Signed [Signature] P.L.S or P.C.E. No. 4895

Title Dep. County Surveyor

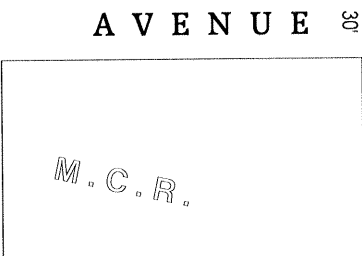


County Surveyor's Comment \_\_\_\_\_

EAST 22nd STREET 30'



S. 65°19'57" E. 180.17'  
 (S. 65°20'00" E. 180.00')(1)



GLEN AVENUE 30'

11 O.P. 5,

M.C.R.

FOUND 1" Ø SPIKE  
 S. 84°03'31" W. 0.10' OF TRUE SITUS  
 DID NOT ACCEPT  
 [REFERENCE (1) CALLS FOR 1 1/4" IRON PIPE]

**LEGEND**

- FOUND AND ACCEPTED MONUMENT AS INDICATED
- SET 3/4" IRON PIPE, L.S. 4403

**REFERENCE:**

(1) YOSEMITE MANOR, 10 O.P. 19, M.C.R.

**BASIS OF BEARINGS:**

N. 24°40'00" E. FOR THE WEST LINE OF GLEN AVENUE AS SHOWN ON THE MAP OF YOSEMITE MANOR, VOLUME 10, OFFICIAL PLATS, PAGE 19, MERCED COUNTY RECORDS.

