

CORNER RECORD

Document Number 1353-B3
County of MERCED, California

City of MERCED

Brief Legal Description MONUMENTS ALONG CAROL AVENUE SOUTH OF MERCED AVENUE
LOCATED IN SECTION 29, T.7S, R.14E, M.D.B.&M.

NW 1/4	NE 1/4
SW 1/4	SE 1/4

CORNER TYPE

Government Corner Control
 Meander Property
 Rancho Other

COORDINATES (Optional)

N _____
 E _____
 Zone _____ NAD27 NAD83
 NAD83 Epoch _____
 Elev. _____
 Vert. Datum: NVGD29 NVGD88
 Meas. Units: Metric Imperial

SEC. 29 T.7S, R.14E Date of Survey 03-02-2015

Corner-- Left as found Found and tagged Established Reestablished Rebuilt

Identification and type of corner found: Evidence used to identify or procedure used to establish or reestablish the corner:
FOUND MONUMENTS AS SHOWN ON PAGE 2.

A description of the physical condition of the monument as found and as set or reset: _____
MONUMENTS ARE IN AREA OF RECONSTRUCTION, SET TIES AS SHOWN ON PAGE 2.

SURVEYOR'S STATEMENT

This Corner Record was prepared by me or under my direction in conformance with
the Land Surveyors' Act on MARCH 3, 2015,



Signed [Signature] P.L.S. or R.C.E. Number 6953

COUNTY SURVEYOR'S STATEMENT

This Corner Record was received March 26, 2015 and examined
and filed March 27, 2015



Signed [Signature] P.L.S. or R.C.E. No: 4895

Title County Surveyor

County Surveyor's Comment _____

LEGEND:

- ⊗ SET MONUMENT AS NOTED
- FOUND 5/8" IRON ROD.
- M.C.R. DENOTES MERCED COUNTY RECORDS
- O.P. DENOTES OFFICIAL PLATS(SUBDIVISION MAPS)
- (M) MEASURED DISTANCE. ALL DISTANCES ARE MEASURED UNLESS NOTED OTHERWISE.

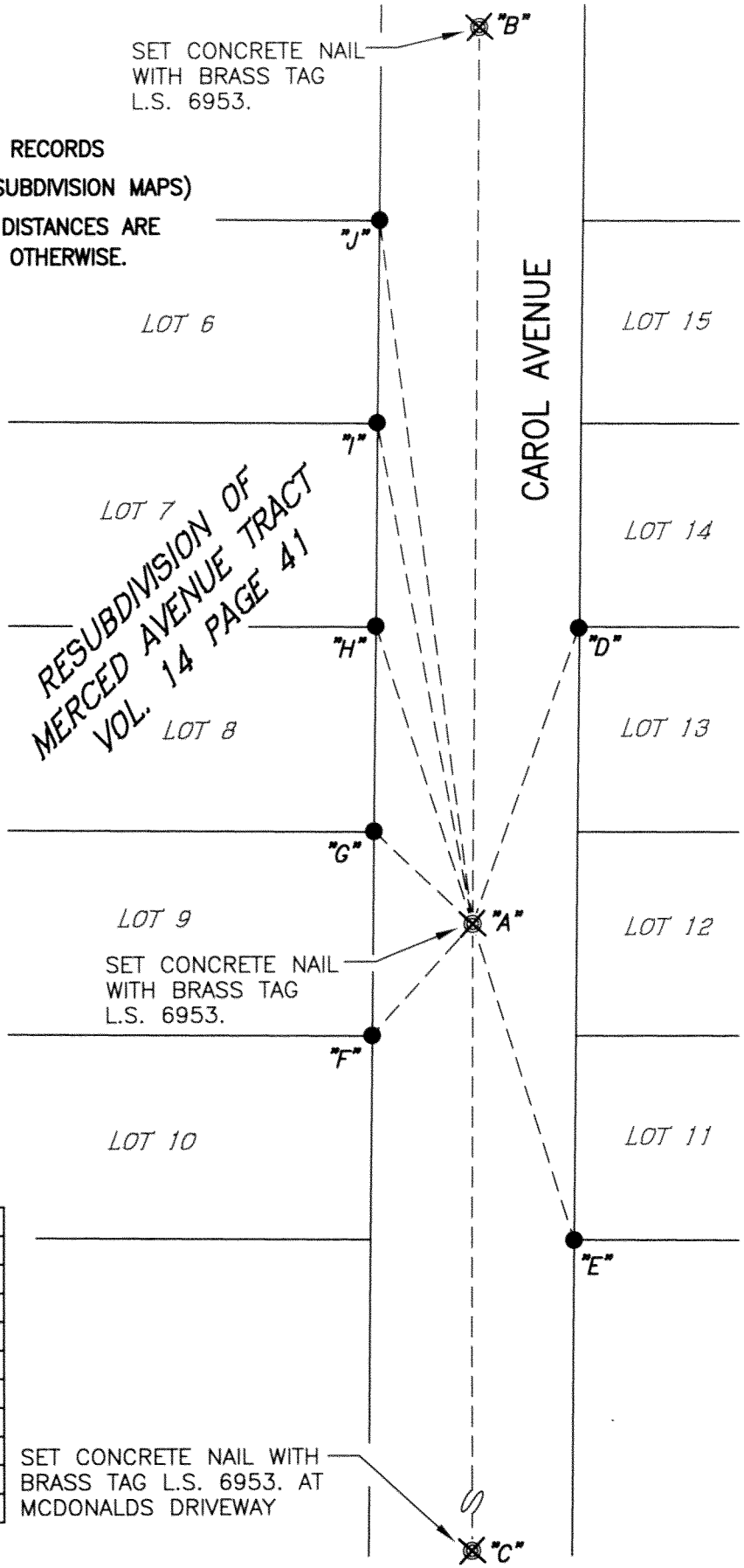
REFERENCE:

(R1) O.P. 14-41, M.C.R.



NOT TO SCALE

RESUBDIVISION OF
MERCED AVENUE TRACT
VOL. 14 PAGE 41



SET CONCRETE NAIL
WITH BRASS TAG
L.S. 6953.

SET CONCRETE NAIL
WITH BRASS TAG
L.S. 6953.

SET CONCRETE NAIL WITH
BRASS TAG L.S. 6953. AT
MCDONALDS DRIVEWAY

∠ AND DISTANCE TABLE

BS-@-FS	∠	FS DISTANCE
B-A-B	00°00'00"	263.70'
B-A-C	179°44'23"	217.45'
B-A-D	19°23'25"	91.96'
B-A-E	161°52'13"	97.87'
B-A-F	221°46'13"	44.29'
B-A-G	312°40'38"	39.90'
B-A-H	341°24'56"	91.89'
B-A-I	348°44'28"	149.95'
B-A-J	352°00'54"	208.96'