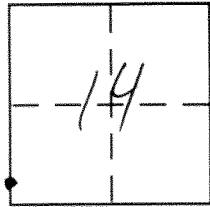


CORNER RECORD

Document Number 1351-P

City of _____ County of Merced, California

Brief Legal Description Witness Corner to Southwest Corner of Section 14 T.7S, R.14E.



CORNER TYPE

Government Corner Control
Meander Property
Rancho Other
Date of Survey October 3, 2012

COORDINATES (Optional)

N. _____
E. _____
Zone _____ NAD27 NAD83
NAD83 Epoch _____
Elev. _____
Vert. Datum: NGVD29 NAVD88
Meas. Units: Metric Imperial

Corner - Left as found Found and tagged Established Reestablished Rebuilt

Identification and type of corner found: Evidence used to identify or procedure used to establish or reestablish the corner:
Found 2" OD iron pipe 20' north of the Southwest corner of Section 14, T.7S, R.14E., per Merced County Field Book 315 pg 59. Tied out prior to reconstruction of Olive Avenue.

A description of the physical condition of the monument as found and as set or reset: See Page 2

SURVEYOR'S STATEMENT

This Corner Record was prepared by me or under my direction in conformance with the Land Surveyor's Act on October 30, 2012
Signed [Signature] P.L.S or ~~P.C.E.~~ No. 4895

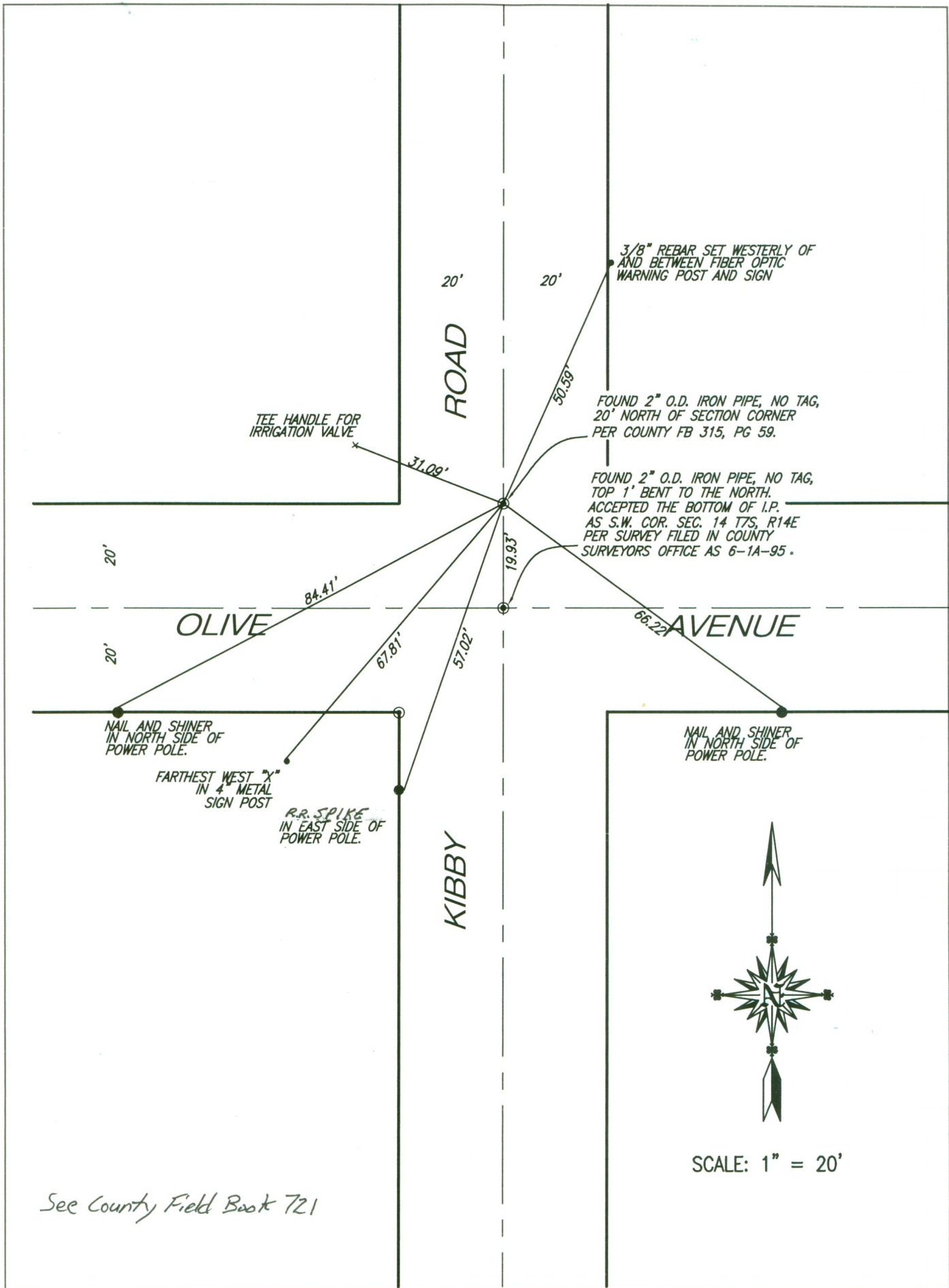


COUNTY SURVEYOR'S STATEMENT

This Corner Record was received October 30, 2012
and examined and filed October 30, 2012.
Signed [Signature] P.L.S or ~~P.C.E.~~ No. 4895
Title Acting County Surveyor



County Surveyor's Comment _____



See County Field Book 721