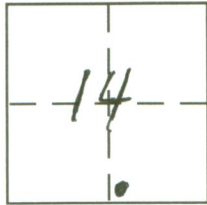


**CORNER RECORD**

Document Number 1351-N

City of \_\_\_\_\_ County of Merced, California

Brief Legal Description Centerline Monument for Beginning of Curve on Olive Avenue



**CORNER TYPE**

Government Corner  Control   
Meander  Property   
Rancho  Other   
Date of Survey October 3, 2012

**COORDINATES (Optional)**

N. \_\_\_\_\_  
E. \_\_\_\_\_  
Zone \_\_\_\_\_ NAD27  NAD83   
NAD83 Epoch \_\_\_\_\_  
Elev. \_\_\_\_\_  
Vert. Datum: NGVD29  NAVD88   
Meas. Units: Metric  Imperial

Corner - Left as found  Found and tagged  Established  Reestablished  Rebuilt

Identification and type of corner found: Evidence used to identify or procedure used to establish or reestablish the corner:

Found 1 1/2" O.D. iron pipe in centerline of Olive Avenue at "STA 29 + 47.12 BC" per unrecorded survey 6-1A-95. Tied out prior to reconstruction of Olive Avenue

A description of the physical condition of the monument as found and as set or reset: See page 2

**SURVEYOR'S STATEMENT**

This Corner Record was prepared by me or under my direction in conformance with the Land Surveyor's Act on November 5, 2012

Signed [Signature] P.L.S or ~~REG.~~ E. No. 4895



**COUNTY SURVEYOR'S STATEMENT**

This Corner Record was received November 5, 2012

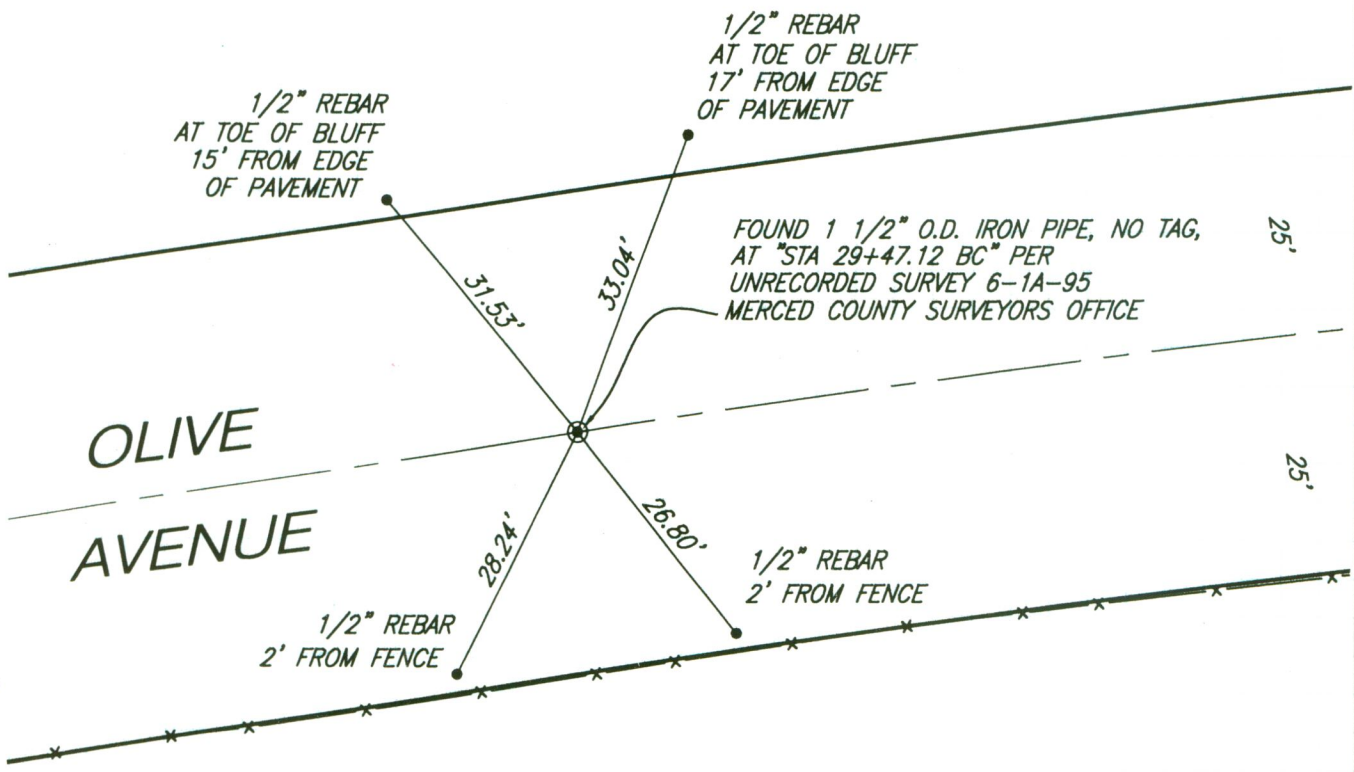
and examined and filed November 5, 2012

Signed [Signature] P.L.S or ~~REG.~~ E. No. 4895

Title Acting County Surveyor



County Surveyor's Comment \_\_\_\_\_



SCALE: 1" = 20'