

CORNER RECORD

Document Number 1351-M
County of Merced, California

City of _____
Brief Legal Description Centerline Monument for End of Curve on Olive Avenue



CORNER TYPE
Government Corner Control
Meander Property
Rancho Other
Date of Survey October 3, 2012

COORDINATES (Optional)
N. _____
E. _____
Zone _____ NAD27 NAD83
NAD83 Epoch _____
Elev. _____
Vert. Datum: NGVD29 NAVD88
Meas. Units: Metric Imperial

Corner - Left as found Found and tagged Established Reestablished Rebuilt

Identification and type of corner found: Evidence used to identify or procedure used to establish or reestablish the corner:
Found 1 1/2" O.D. iron pipe in centerline of Olive Avenue
at "STA 25+87.13 EC" per unrecorded survey 6-1A-95
Tied out prior to reconstruction of Olive Avenue.

A description of the physical condition of the monument as found and as set or reset: See page 2

SURVEYOR'S STATEMENT

This Corner Record was prepared by me or under my direction in conformance with the Land Surveyor's Act on November 2, 2012
Signed [Signature] P.L.S or ~~P.C.E.~~ E. No. 4895

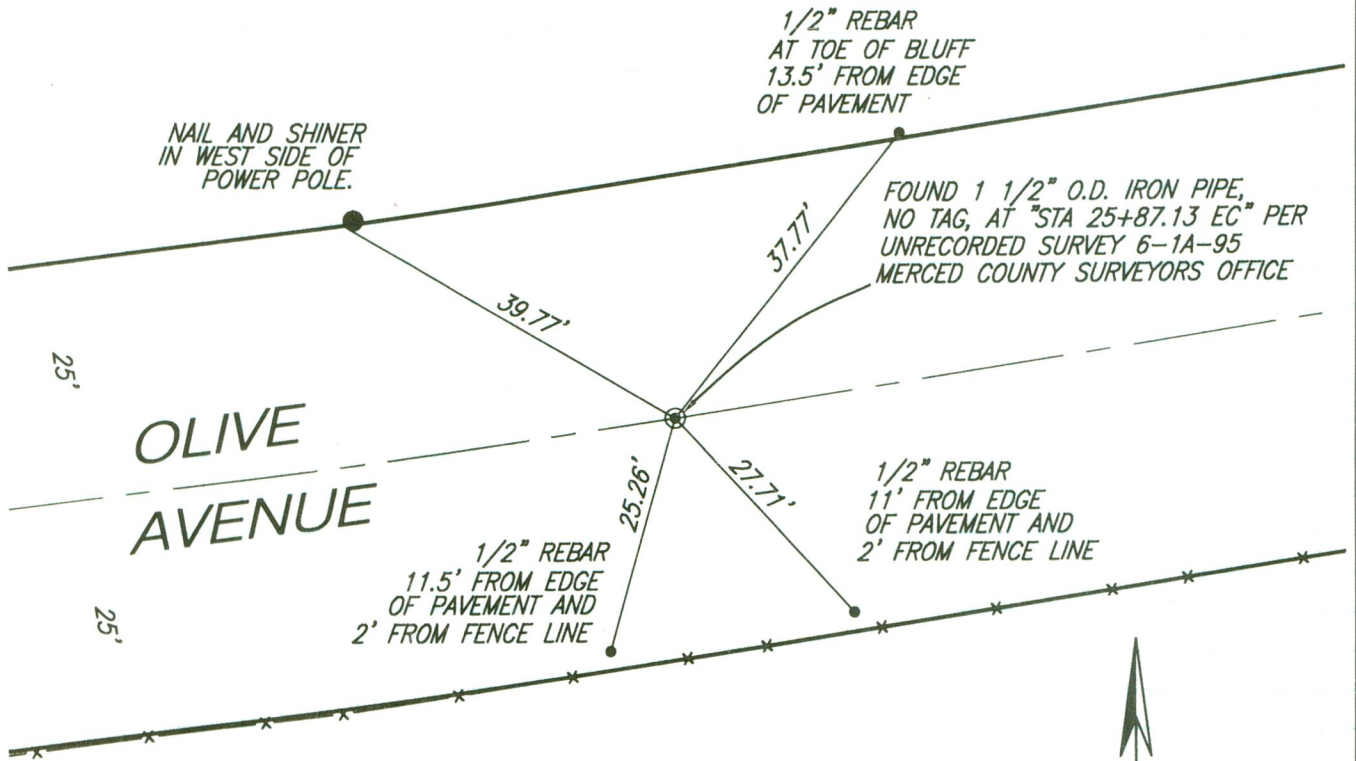


COUNTY SURVEYOR'S STATEMENT

This Corner Record was received November 2, 2012
and examined and filed November 5, 2012
Signed [Signature] P.L.S or ~~P.C.E.~~ E. No. 4895
Title Acting County Surveyor



County Surveyor's Comment _____



FOUND 1 1/2" O.D. IRON PIPE,
NO TAG, AT "STA 25+87.13 EC" PER
UNRECORDED SURVEY 6-1A-95
MERCED COUNTY SURVEYORS OFFICE

1/2" REBAR
11.5' FROM EDGE
OF PAVEMENT AND
2' FROM FENCE LINE

1/2" REBAR
11' FROM EDGE
OF PAVEMENT AND
2' FROM FENCE LINE



SCALE: 1" = 20'