

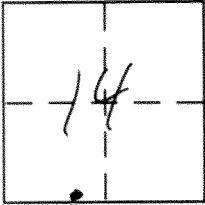
CORNER RECORD

Document Number 1351-L(2)

City of _____

County of Merced, California

Brief Legal Description centerline Monument for Beginning of Curve on Olive Avenue



7/14

CORNER TYPE

Government Corner Control
Meander Property
Rancho Other
Date of Survey November 26, 2012

COORDINATES (Optional)

N. _____
E. _____
Zone _____ NAD27 NAD83
NAD83 Epoch _____
Elev. _____
Vert. Datum: NGVD29 NAVD88
Meas. Units: Metric Imperial

Corner - Left as found Found and tagged Established Reestablished Rebuilt

Identification and type of corner found: Evidence used to identify or procedure used to establish or reestablish the corner:

Monument destroyed by road reconstruction. Set 1" iron pipe tagged "Merced Co. Surveyor" in monument well using ties set on Corner Record 1351-L dated October 3, 2012 at "STA 23 + 15.91 BC" per unrecorded survey 6-1A-95.

A description of the physical condition of the monument as found and as set or reset: See page 2

SURVEYOR'S STATEMENT

This Corner Record was prepared by me or under my direction in conformance with the Land Surveyor's Act on April 2, 2013

Signed [Signature] P.L.S or ~~P.C.E.~~ No. 4895



COUNTY SURVEYOR'S STATEMENT

This Corner Record was received April 2, 2013

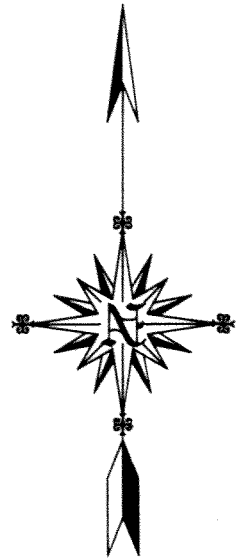
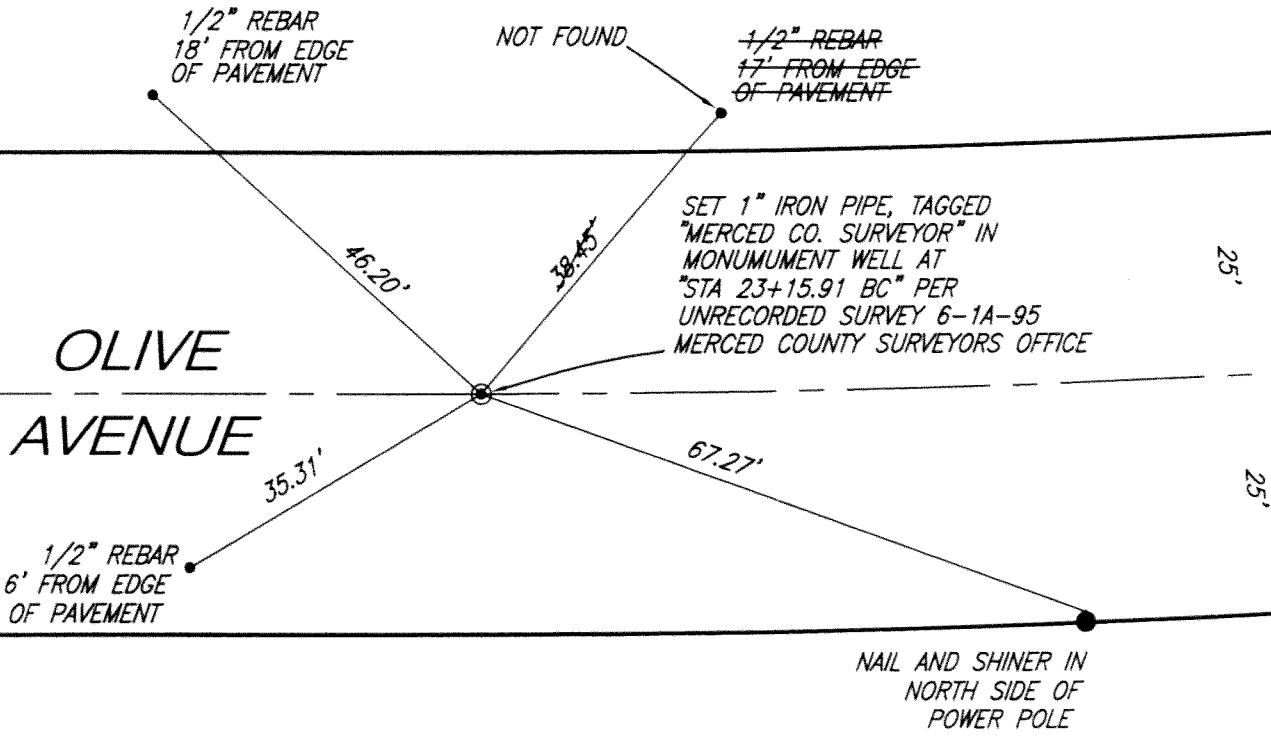
and examined and filed April 4, 2013

Signed [Signature] P.L.S or ~~P.C.E.~~ No. 4895

Title Acting County Surveyor

County Surveyor's Comment _____





SCALE: 1" = 20'