

CORNER RECORD

COUNTY OF MERCED T. 7 SOUTH R. 14 EAST M.D.B. & M. MERIDIAN CALIFORNIA

CORNER TYPE: GOV'T. CORNER MEANDER RANCHO CONTROL OTHER

CORNER IDENTIFICATION - DATE OF VISIT AUGUST 9 19 95



CORNER LEFT AS FOUND FOUND AND TAGGED REESTABLISHED OBLITERATED CORNER REBUILT

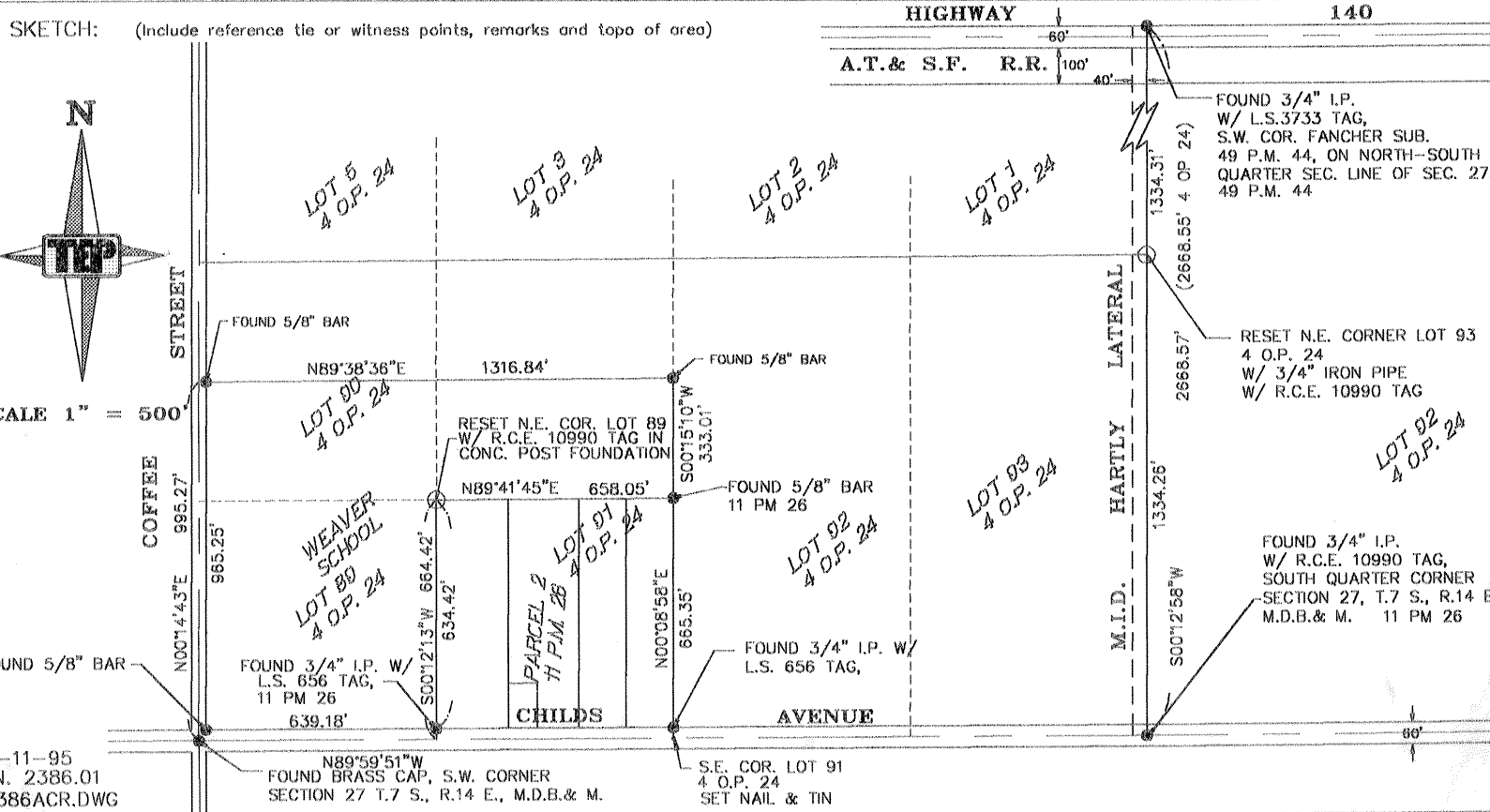
PHYSICAL DESCRIPTION OF CORNER FOUND; EVIDENCE AND METHOD USED TO IDENTIFY OF REESTABLISH.
SEE SKETCH

PHYSICAL DESCRIPTION OF MONUMENTS REBUILT OR PERPETUATED.
SEE SKETCH

CALIFORNIA COORDINATE SYSTEM ORDER: FIRST SECOND THIRD
 METHODS USED: NGS (USC & GS) STATE COUNTY OTHER STATION _____ STATION _____
 ZONE _____ ELEVATION _____ NORTHINGS (Y) _____ EASTINGS (X) _____

(FOLD)

SKETCH: (Include reference tie or witness points, remarks and topo of area)



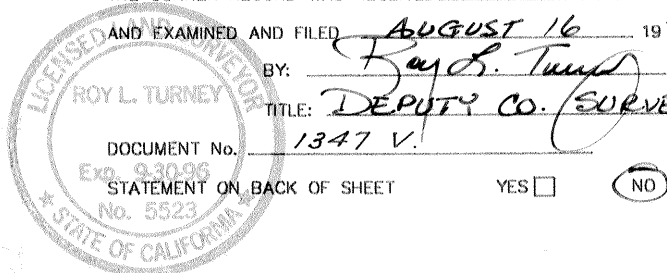
SURVEYOR'S CERTIFICATE

THIS CORNER RECORD WAS PREPARED BY ME OR UNDER MY DIRECTION IN CONFORMANCE WITH THE LAND SURVEYORS ACT ON AUG 15 19 95

SIGNED James W. Tolladay
 L.S. or R.C.E. No. 10990
 SEAL REGISTERED PROFESSIONAL ENGINEER JAMES W. TOLLADAY No. 10990 Exp. 12-31-96 CIVIL STATE OF CALIFORNIA

COUNTY SURVEYOR'S CERTIFICATE

THE CORNER RECORD WAS RECEIVED 8-16 19 95
 AND EXAMINED AND FILED AUGUST 16 19 95
 BY: Ray S. Tump
 TITLE: DEPUTY CO. SURVEYOR
 DOCUMENT No. 1347 V.



STATEMENT ON BACK OF SHEET YES NO