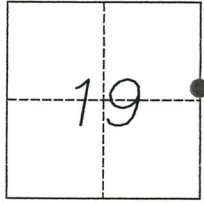


# CORNER RECORD

Agency Index 1345-X4 (2)  
Document Number \_\_\_\_\_

City of MERCED County of MERCED, California

Brief Legal Description NE CORNER PARCEL 1 112-P.M.-34 M.C.R. NE 1/4 SEC 19 T.7,S.,R.14E, M.D.M.



T7S, R14E

### CORNER TYPE

- Government Corner  Control
- Meander  Property
- Rancho  Other

Date of Survey 05-18-2017

### COORDINATES (Optional)

- N. \_\_\_\_\_ E. \_\_\_\_\_
- Elevation \_\_\_\_\_
- Units  Metric  U.S. Survey Foot
- Horizontal Datum \_\_\_\_\_
- Zone \_\_\_\_\_ Epoch Date \_\_\_\_\_
- Vertical Datum \_\_\_\_\_
- Complies with Public Resources Code §§8801-8819
- Complies with Public Resources Code §§8890-8902

- PLS Act Ref.:  8765(d)  8771  8773  Other:
- Corner/Monument:  Left as found  Established  Rebuilt  Pre-Construction
- Found and tagged  Reestablished  Referenced  Post-Construction

Narrative of corner identified and monument as found, set, reset, replaced, or removed:

See sheet #2 for description(s):

### SURVEYOR'S STATEMENT

This Corner Record was prepared by me or under my direction in conformance with

the Professional Land Surveyors' Act on 05-23-2017

Signed [Signature] P.L.S. or R.C.E. No. 7825



### COUNTY SURVEYOR'S STATEMENT

This Corner Record was received JUNE 1, 2018

and examined and filed JUNE 26, 2018

Signed Zach T. Janz P.L.S. or R.C.E. No. 8664

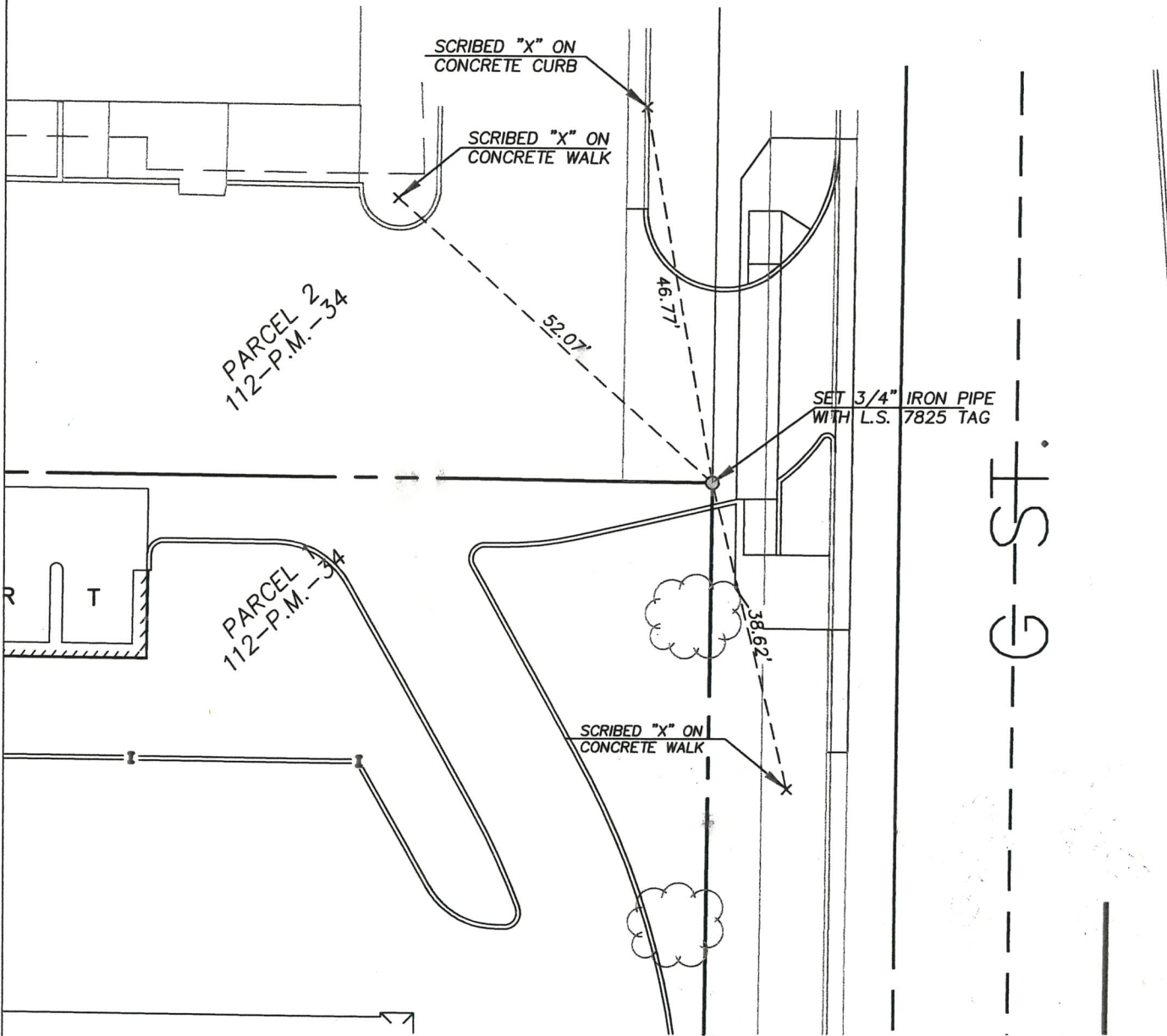
Title COUNTY SURVEYOR

County Surveyor's Comment





SCALE: 1"=20'



05/23/2017  
X130383