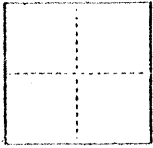


CORNER RECORD

CG. of Merced T. 7 S. R. 14 E. M.D. MERIDIAN CALIFORNIA

CORNER TYPE: GOV'T. CORNER MEANDER RANCHO CONTROL OTHER

CORNER IDENTIFICATION — DATE OF VISIT _____ 19____



N.E. corner of Lot 29 of St. Francis Square No. 2, filed Vol. 24, Official Plats, page 39, 40, M.C.R.

CORNER — LEFT AS FOUND FOUND AND TAGGED REESTABLISHED OBLITERATED CORNER REBUILT

PHYSICAL DESCRIPTION OF CORNER FOUND; EVIDENCE AND METHOD USED TO IDENTIFY OR REESTABLISH

No corner found; used subdivision recorded data to re-establish Lot corner.

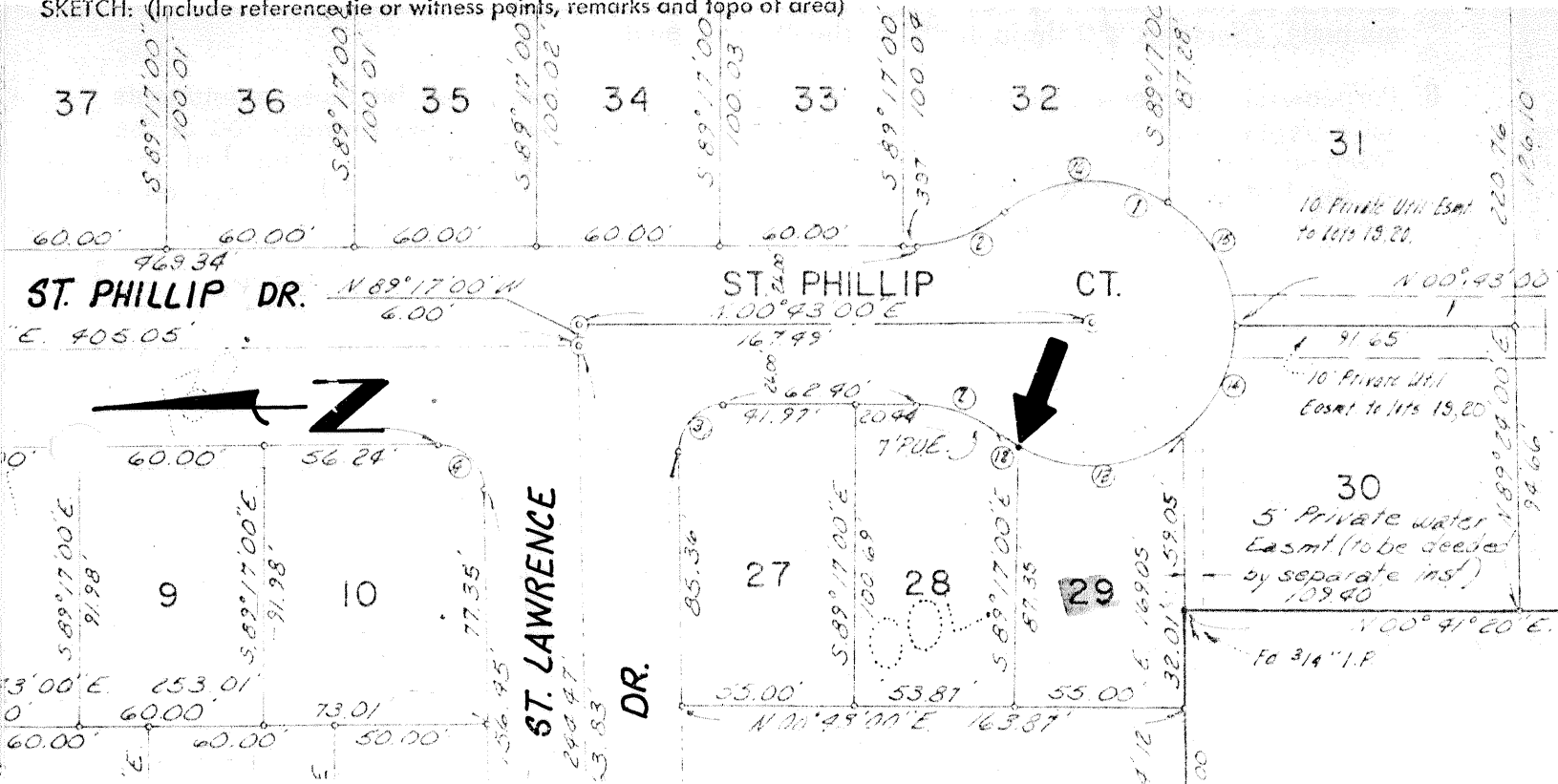
PHYSICAL DESCRIPTION OF MONUMENTS REBUILT OR PERPETUATED

Set 3/4" I.P. with cap R.C.E. 26938

CALIFORNIA COORDINATE SYSTEM ORDER: FIRST SECOND THIRD
STATIONS USED: NGS (USC & GS) STATE COUNTY OTHER STATION _____ STATION _____
ZONE _____ ELEVATION _____ NORTHINGS (Y) _____ EASTINGS (X) _____

(Fold)

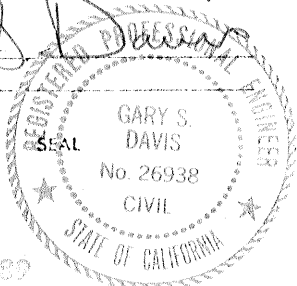
SKETCH: (Include reference tie or witness points, remarks and topo of area)



SURVEYOR'S CERTIFICATE

THIS CORNER RECORD WAS PREPARED BY ME OR UNDER MY DIRECTION IN CONFORMANCE WITH THE LAND SURVEYORS ACT OF July 25, 1986.

SIGNED: Gary S. Davis
or (R.C.E.) No. 26938



EXP. 3-31-89

COUNTY SURVEYOR'S CERTIFICATE

THE CORNER RECORD WAS RECEIVED 7-28-1986
AND EXAMINED AND FILED 7-29-1986

BY: Roy Turner
TITLE: Dep. Co. Surveyor

DOCUMENT No. 1345-MMM 9

STATEMENT ON BACK OF SHEET

YES NO