

CORNER RECORD

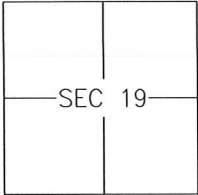
Agency Index 1345-L

Document Number _____

City of MERCED

County of MERCED, California

Brief Legal Description FOUND MONUMENT ON THE CENTERLINE OF CANAL STREET CROSSING 23RD STREET



T7S/R14E

CORNER TYPE

- Government Corner Control
 Meander Property
 Rancho Other

Date of Survey 2020-01-20

COORDINATES (Optional)

- N. _____ E. _____
 Elevation _____
 Units Metric U.S. Survey Foot
 Horizontal Datum _____
 Zone _____ Epoch Date _____
 Vertical Datum: _____
 Complies with Public Resources Code §§8801-8819
 Complies with Public Resources Code §§8890-8902

PLS Act Ref.: 8765(d) 8771 8773 Other: _____

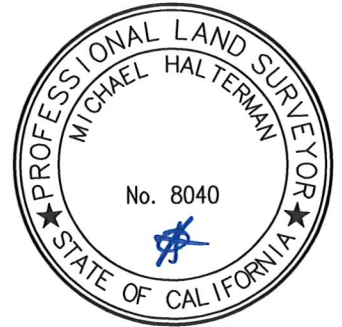
Corner/Monument: Left as found Established Rebuilt Pre-Construction
 Found and tagged Reestablished Referenced Post-Construction

Narrative of corner identified and monument as found and set or reset:

See sheet #2 for description(s):

SURVEYOR'S STATEMENT

This Corner Record was prepared by me or under my direction in conformance with the Professional Land Surveyor's Act on 4 March, 2020.
 Signed [Signature] P.L.S. or R.C.E. No.: 8040

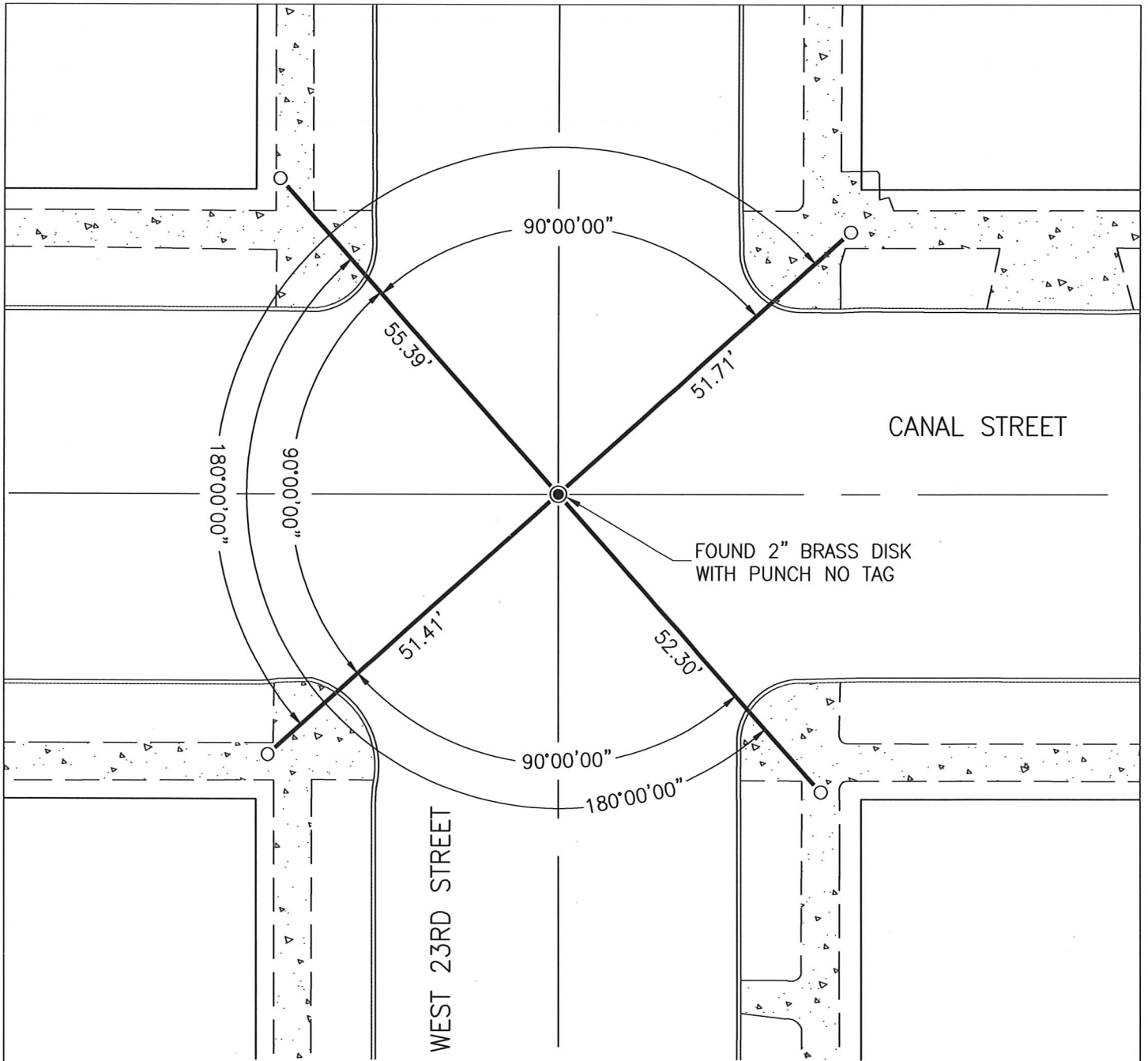


COUNTY SURVEYOR'S STATEMENT

This Corner Record was received MARCH 10th, 2020 and examined and filed MARCH 10th, 2020.
 Signed Zachary T. Janz P.L.S. or R.C.E. No.: 80664
 Title COUNTY SURVEYOR



County Surveyor's Comment



LEGEND:

- FOUND AND ACCEPTED MONUMENT PER AN UNRECORDED MAP 6-1A-347, ON FILE WITH MERCED COUNTY SURVEYOR.
- SET CUT CROSS IN SIDEWALK.

