

# CORNER RECORD

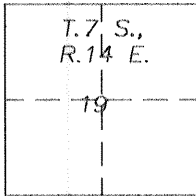
DOCUMENT NUMBER 1345 KKK

CITY OF MERCED

COUNTY OF MERCED

CALIFORNIA

BRIEF LEGAL DESCRIPTION INTERSECTION OF CENTERLINE 23rd AND 30' SOUTHEASTERLY OF CENTERLINE OF "N" STREET AS SHOWN ON "RECORD OF SURVEY FOR MERCED COUNTY JUSTICE FACILITY" RECORDED IN VOLUME 31 OF SURVEYS AT PAGES 11 AND 12, MERCED COUNTY RECORDS.



### CORNER TYPE

GOVERNMENT CORNER  CONTROL   
 MEANDER  PROPERTY   
 RANCHO  OTHER   
 DATE OF SURVEY 2-12-98

### COORDINATES (Optional)

N. \_\_\_\_\_  
 E. \_\_\_\_\_  
 ZONE \_\_\_\_\_ DATUM \_\_\_\_\_  
 ELEV. \_\_\_\_\_

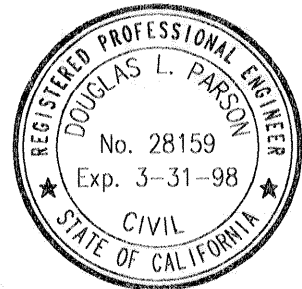
**CORNER**— CORNER LEFT AS FOUND  FOUND AND TAGGED  ESTABLISHED  REESTABLISHED  REBUILT

IDENTIFICATION AND TYPE OF CORNER FOUND: EVIDENCE USED TO IDENTIFY OR PROCEDURE USED TO ESTABLISH OR REESTABLISH THE CORNER  
FOUND 3/4" IRON PIPE ON A 30' SOUTHEASTERLY OFFSET LINE TO THE CENTER LINE OF "N" STREET AND ON THE CENTER LINE OF WEST 23rd STREET. PIPE AGREED WITH TIES SHOWN ON CORNER RECORD NO. 1345 KKK.

A DESCRIPTION OF THE PHYSICAL CONDITION OF THE MONUMENT AS FOUND AND AS SET OR RESET: MONUMENT IN GOOD CONDITION.

### SURVEYOR'S STATEMENT

THIS CORNER RECORD WAS PREPARED BY ME OR UNDER MY DIRECTION IN CONFORMANCE WITH THE LAND SURVEYORS ACT ON MARCH 2 1998.  
 SIGNED *Douglas L. Parson* L.S. or R.C.E. Number R.C.E. 28159

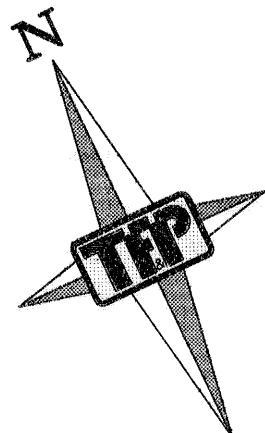
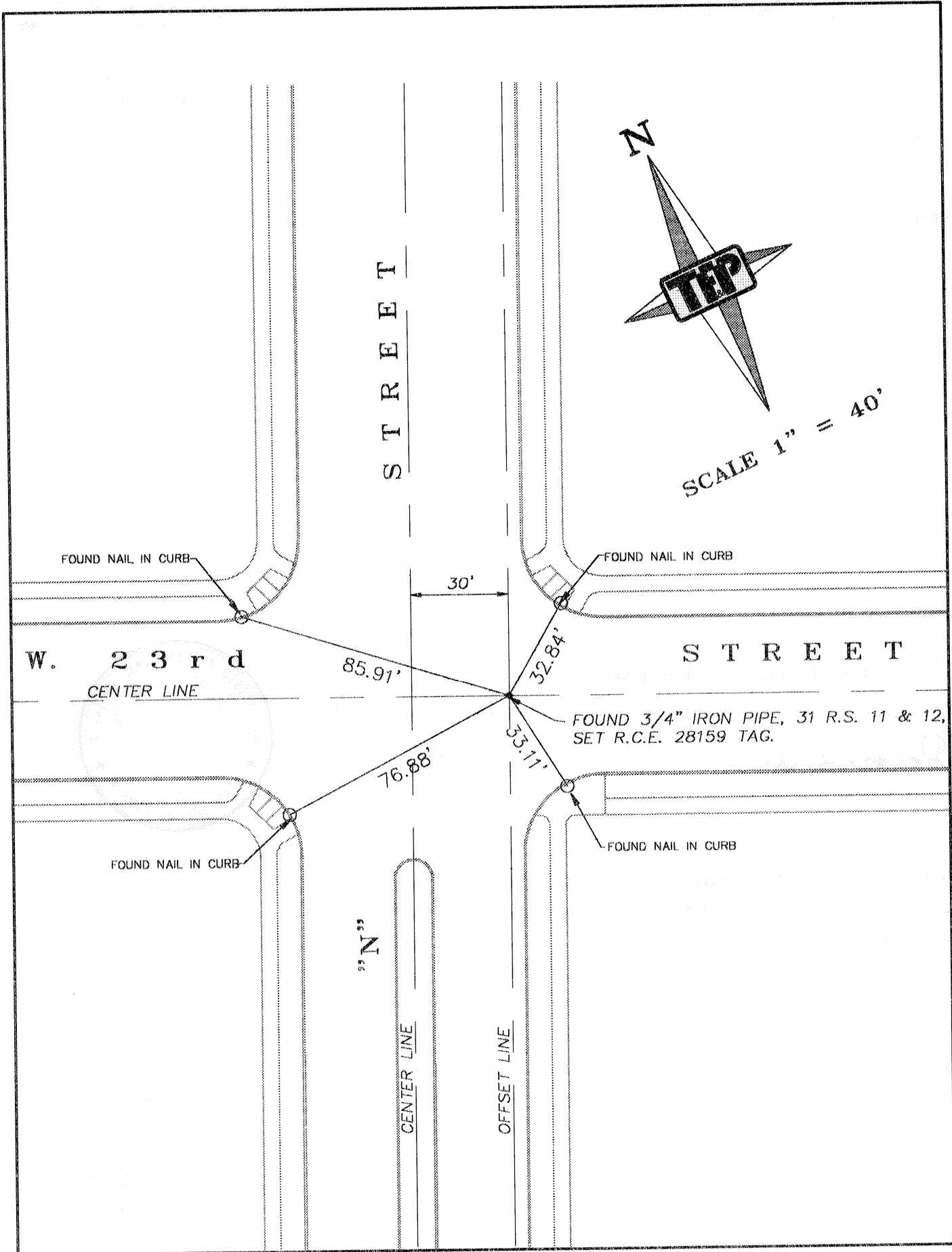


### COUNTY SURVEYOR'S STATEMENT

THE CORNER RECORD WAS RECEIVED 3-18- 1998, AND EXAMINED AND FILED 3-19- 1998.  
 SIGNED *Roy L. Turney* TITLE DEP. CO. SUR.



County Surveyor's Comment \_\_\_\_\_



SCALE 1" = 40'

FOUND NAIL IN CURB

FOUND NAIL IN CURB

W. 23rd  
CENTER LINE

STREET

30'  
85.91'

32.84'

FOUND 3/4" IRON PIPE, 31 R.S. 11 & 12,  
SET R.C.E. 28159 TAG.

76.88'

33.11'

FOUND NAIL IN CURB

FOUND NAIL IN CURB

39" N

CENTER LINE

OFFSET LINE