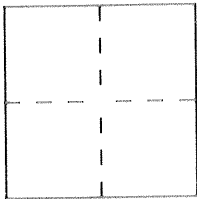


CORNER RECORD

Document Number 1345-EEB

City of MERCED County of MERCED, California

Brief Legal Description NE LINE BLOCK 165 "TOWN OF MERCED"



CORNER TYPE

COORDINATES (Optional)

Government Corner Control
Meander Property
Rancho Other
Date of Survey 7-29-95

N. _____
E. _____
Zone _____ Datum _____
Elev. _____

Corner — Left as found Found and tagged Established Reestablished Rebuilt

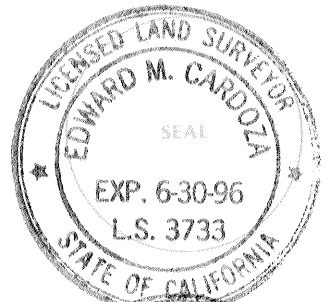
Identification and type of corner found: Evidence used to identify or procedure used to establish or reestablish the corner:
Found as described on reverse side of this sheet. Points tied out for City of Merced Engineering Dept., prior to construction of "O" STREET STORM DRAIN LINE. Merced City Project No. 1531.

A description of the physical condition of the monument as found and as set or reset: These ties are for the purpose of perpetuating the found monumentation. No claim is made as to the relationship of the points or lines shown hereon to true boundary locations.

SURVEYOR'S STATEMENT

This Corner Record was prepared by me or under my direction in conformance with the Land Surveyors' Act on 7-31 1995.

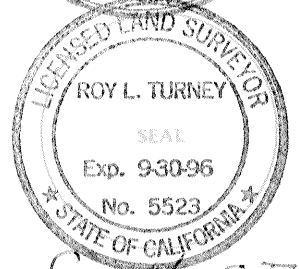
Signed Edward M. Cardoza L.S. or R.C.E. Number 4.5. 3733



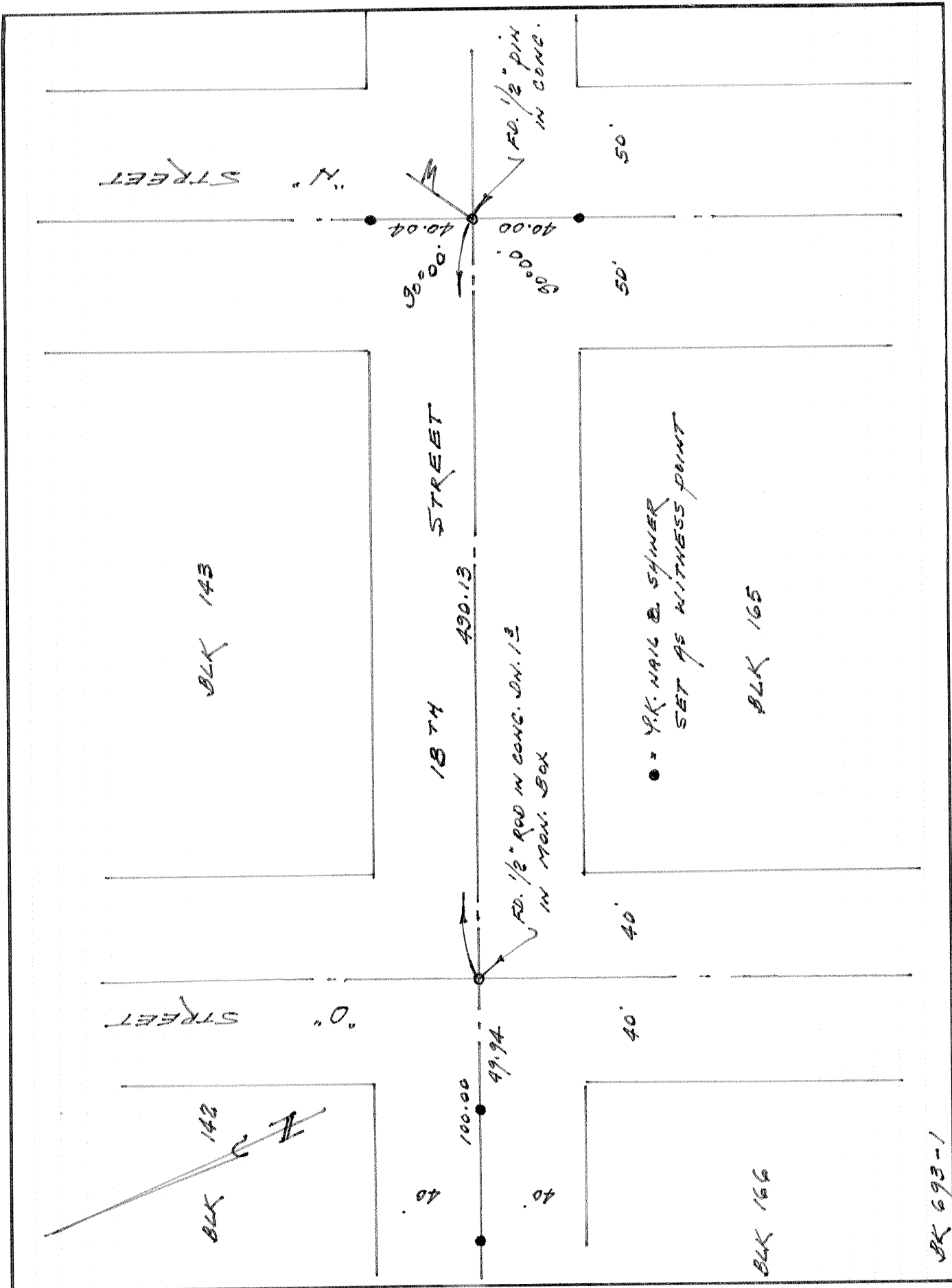
COUNTY SURVEYOR'S STATEMENT

This Corner Record was received Aug. 2 1995 and examined and filed Aug. 3 1995.

Signed Roy L. Turney Title DEP CO. SUR.



County Surveyor's Comment See R.S. 17 Pg. 48-49 for N. ST



SK 693-1