

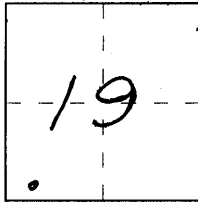
CORNER RECORD

Document Number 1345-EEE

City of Merced County of Merced, California

Brief Legal Description Centerline monument for 18th and N streets as shown on Parcel Map Bk. 96 Pg. 43

T.75, R.14E.



CORNER TYPE

- Government Corner Control
- Meander Property
- Rancho Other

Date of Survey January 16, 2008

COORDINATES (Optional)

N. _____
 E. _____
 Zone _____ NAD27 NAD83
 NAD83 Epoch _____
 Elev. _____
 Vert. Datum: NGVD29 NAVD88
 Meas. Units: Metric Imperial
 U.S. Survey foot

Corner — Left as found Found and tagged Established Reestablished Rebuilt

Identification and type of corner found; Evidence used to identify or procedure used to establish or reestablish the corner:
Reestablished centerline monument from corner record # 1345-EEE

A description of the physical condition of the monument as found and as set or reset: _____
Set 3/4" iron pipe tagged PLS 7027 in monument well

SURVEYOR'S STATEMENT

This Corner Record was prepared by me or under my direction in conformance with the Land Surveyor's Act on January 16, 2009

Signed [Signature] L.S. or R.C.E. No. PLS 7027



COUNTY SURVEYOR'S STATEMENT

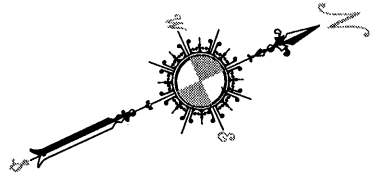
This Corner Record was received January 23, 2009
and examined and filed February 3, 2009

Signed [Signature] L.S. or R.C.E. No. 4895

Title Dep. County Surveyor

County Surveyor's Comment _____





FOUND MAG NAIL
FLUSH IN WALK

FOUND PK NAIL
IN WALK
STOP

STOP

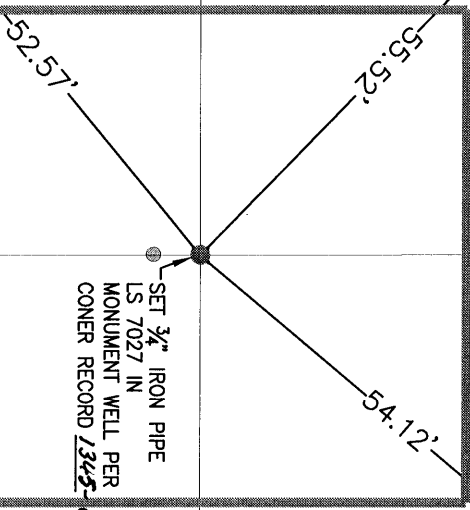
"N" STREET

18th STREET

STOP

STOP

FOUND MAG NAIL
FLUSH IN WALK



52.57'

55.52'

54.12'

SET 3/4" IRON PIPE
LS 7027 IN
MONUMENT WELL PER
CONER RECORD 1345 EEE

DATE OF SURVEY	01-16-09
DRAWING PATH	C:\LP\08036
DRAWING NAME	CORNER RECORD.dwg
DRAWN BY	Mike A
REVISION DATE	01/17/09

CCS
 Construction
 Surveying

2801 Airport Dr. Ste. 202
 Madera, California 93637
 David: 559-779-9474
 Mike: 209-761-1027
 Fax: 559-354-0107
 www.ccsurveying.net

STOP

