

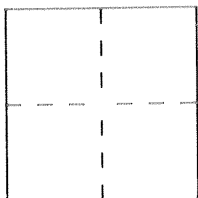
CORNER RECORD

Document Number 1345-EEE

City of MERCED

County of MERCED, California

Brief Legal Description NE LINE BLOCK 165 "TOWN OF MERCED"



CORNER TYPE

Government Corner Control
Meander Property
Rancho Other
Date of Survey 12-13-95

COORDINATES (Optional)

N. _____
E. _____
Zone _____ Datum _____
Elev. _____

Corner — Left as found Found and tagged Established Reestablished Rebuilt

Identification and type of corner found: Evidence used to identify or procedure used to establish or reestablish the corner:

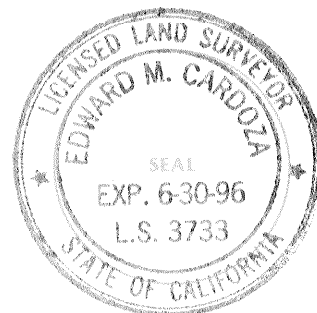
RESET OR FOUND AS DESCRIBED ON REVERSE SIDE OF THIS SHEET.
DOCUMENT NO. 1345-EEE (CORNER RECORD) USED FOR REPLACING
MONUMENT. POINT REMONUMENTED FOR CITY OF MERCED, AFTER
CONSTRUCTION OF 0" STREET STORM DRAIN LINE - MERCED
CITY PROJECT NO. 1531.

A description of the physical condition of the monument as found and as set or reset: RESET WITH 3/4" I.P.
TO PERPETUATE PREVIOUSLY FOUND 1/2" ROD - DN. 1 1/2" IN MON. BOX -
DESTROYED DURING CONSTRUCTION. NO CLAIM IS MADE AS TO THE
RELATIONSHIP OF SHOWN POINTS OR LINES TO TRUE BOUNDARY
LOCATIONS.

SURVEYOR'S STATEMENT

This Corner Record was prepared by me or under my direction in conformance with the Land Surveyors' Act on 1-20 1996.

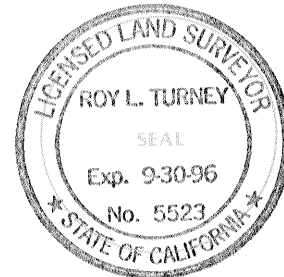
Signed Edward M. Cardoza L.S. or R.C.E. Number L.S. 3733



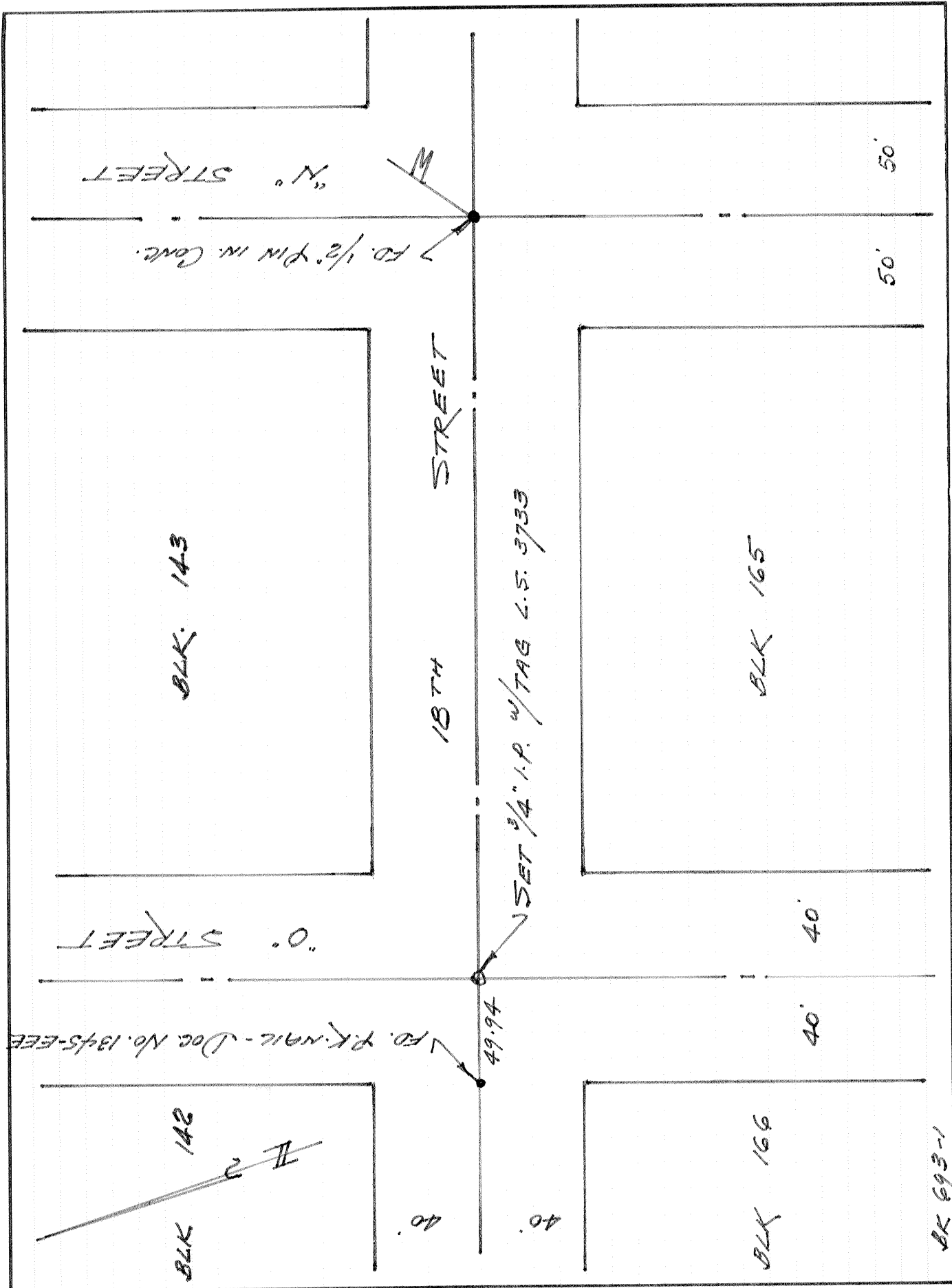
COUNTY SURVEYOR'S STATEMENT

This Corner Record was received 1-23 1996 and examined and filed 1-23 1996.

Signed Roy L. Turney Title DEP. CO. SUR.



County Surveyor's Comment _____



BLK 693-1