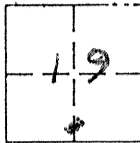


CORNER RECORD

CITY OF MERCED T. 7 S R. 14 E MDBFM MERIDIAN CALIFORNIA

CORNER TYPE: GOVT. CORNER MEANDER RANCHO CONTROL OTHER

CORNER IDENTIFICATION - DATE OF VISIT APRIL 18 19 90



WEST LINE LOT 3 BLOCK 109
TOWN OF MERCED RM BK 2, OPPG 12

CORNER — LEFT AS FOUND FOUND AND TAGGED REESTABLISHED OBLITERATED CORNER REBUILT

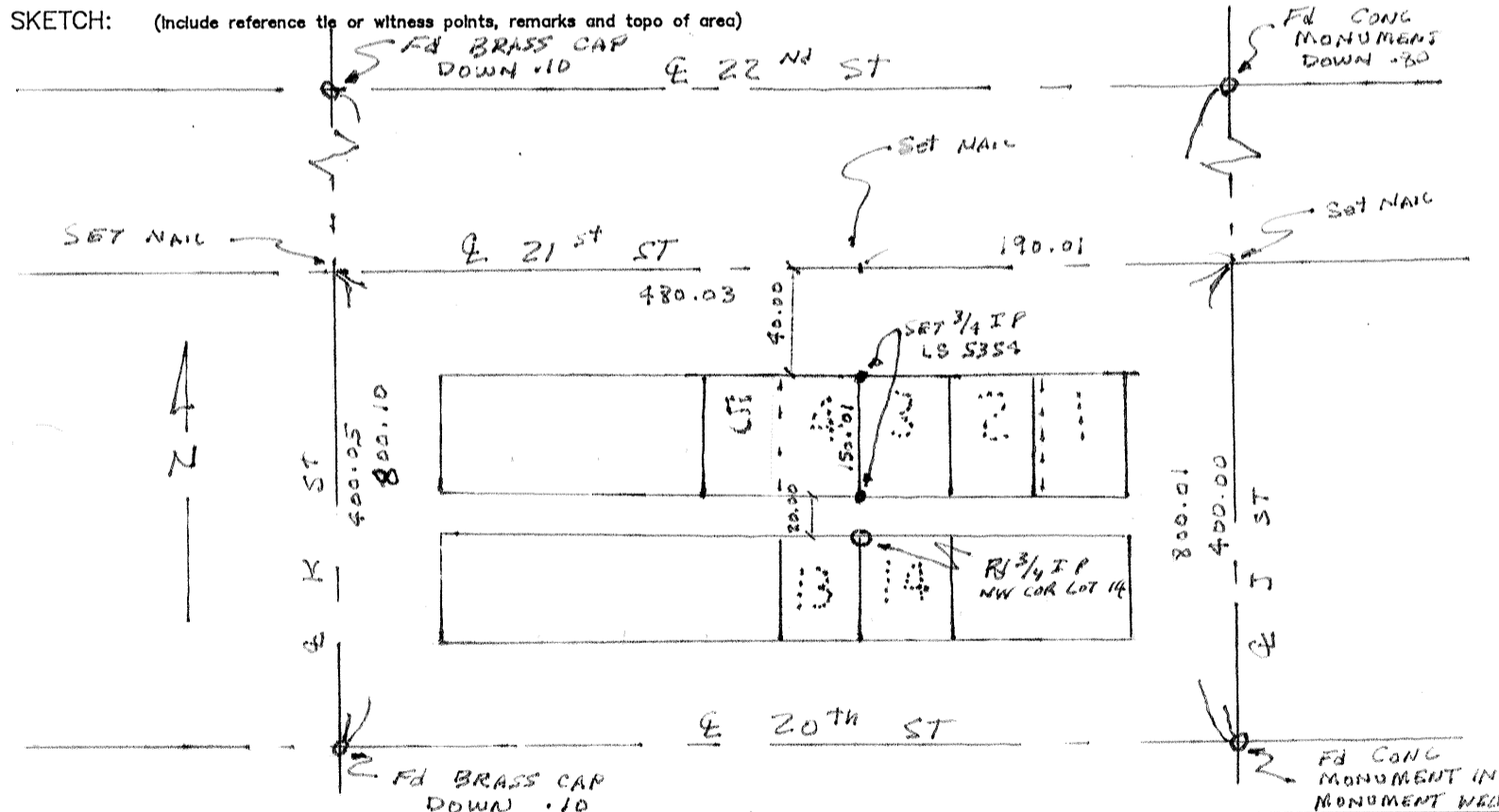
PHYSICAL DESCRIPTION OF CORNER FOUND; EVIDENCE AND METHOD USED TO IDENTIFY OR REESTABLISH.

PHYSICAL DESCRIPTION OF MONUMENTS REBUILT OR PERPETUATED.

CALIFORNIA COORDINATE SYSTEM ORDER: FIRST SECOND THIRD
STATIONS USED: NGS (USC & GS) STATE COUNTY OTHER STATION _____ STATION _____
ZONE _____ ELEVATION _____ NORTHINGS (Y) _____ EASTINGS (X) _____

(Fold)

SKETCH: (Include reference tie or witness points, remarks and topo of area)



SURVEYOR'S CERTIFICATE

THIS CORNER RECORD WAS PREPARED BY ME OR UNDER MY DIRECTION IN CONFORMANCE WITH THE LAND SURVEYORS ACT ON MAY 15 19 90

SIGNED Ralph Werner

L.S. or R.C.E. No. LS 5354
EXP. 5/31/91



COUNTY SURVEYOR'S CERTIFICATE

THE CORNER RECORD WAS RECEIVED AND EXAMINED AND FILED 5-29 19 90

BY: [Signature]
TITLE: County Surveyor

DOCUMENT No. 1345 B218

STATEMENT ON BACK OF SHEET

YES NO

No. 5523

