

# CORNER RECORD

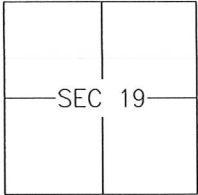
Agency Index 1345-A4

Document Number \_\_\_\_\_

City of MERCED

County of MERCED, California

Brief Legal Description FOUND MONUMENT ON THE CENTERLINE OF CANAL STREET CROSSING 21ST STREET



T7S/R14E

### CORNER TYPE

- Government Corner  Control   
 Meander  Property   
 Rancho  Other

Date of Survey 2020-01-20

### COORDINATES (Optional)

- N. \_\_\_\_\_ E. \_\_\_\_\_  
 Elevation \_\_\_\_\_  
 Units Metric  U.S. Survey Foot   
 Horizontal Datum \_\_\_\_\_  
 Zone \_\_\_\_\_ Epoch Date \_\_\_\_\_  
 Vertical Datum: \_\_\_\_\_  
 Complies with Public Resources Code §§8801-8819  
 Complies with Public Resources Code §§8890-8902

PLS Act Ref.:  8765(d)  8771  8773 Other: \_\_\_\_\_

Corner/Monument:  Left as found  Established  Rebuilt  Pre-Construction  
 Found and tagged  Reestablished  Referenced  Post-Construction

Narrative of corner identified and monument as found and set or reset:  
 See sheet #2 for description(s):

### SURVEYOR'S STATEMENT

This Corner Record was prepared by me or under my direction in conformance with the Professional Land Surveyor's Act on 4 March, 2020.  
Signed [Signature] P.L.S. or R.C.E. No.: 8040

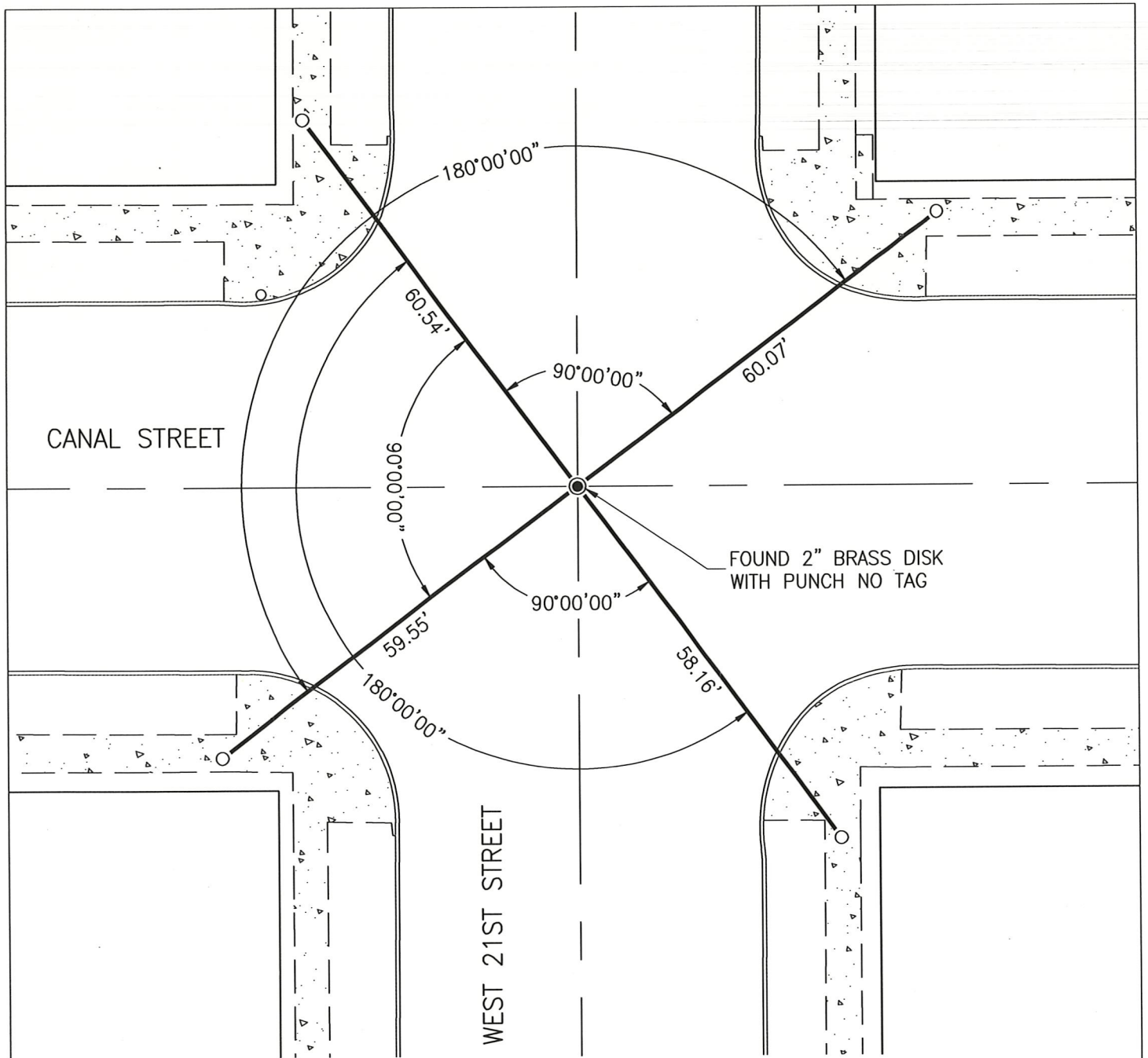


### COUNTY SURVEYOR'S STATEMENT

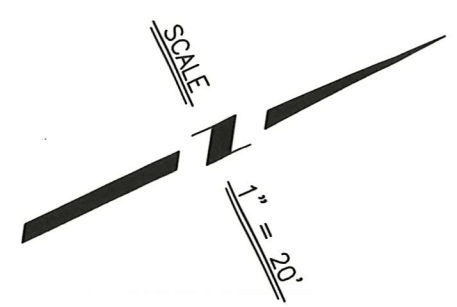
This Corner Record was received MARCH 10<sup>th</sup>, 2020 and examined and filed MARCH 10<sup>th</sup>, 2020.  
Signed Zachary T. Janz P.L.S. or R.C.E. No.: 8664  
Title COUNTY SURVEYOR



County Surveyor's Comment



FOUND 2" BRASS DISK WITH PUNCH NO TAG



LEGEND:

- FOUND AND ACCEPTED MONUMENT PER AN UNRECORDED MAP 6-1A-347, ON FILE WITH MERCED COUNTY SURVEYOR.
- SET CUT CROSS IN SIDEWALK.