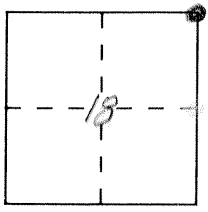


CORNER RECORD

Document Number 1330

City of _____ County of MERCED, California

Brief Legal Description N.E. Corner Section 18 T8S, R16E



CORNER TYPE

- Government Corner
- Meander
- Rancho
- Date of Survey 4-26-91
- Control
- Property
- Other

COORDINATES (Optional)

N. _____
 E. _____
 Zone _____ Datum _____
 Elev. _____

Corner — Left as found Found and tagged Established Reestablished Rebuilt

Identification and type of corner found: Evidence used to identify or procedure used to establish or reestablish the corner:

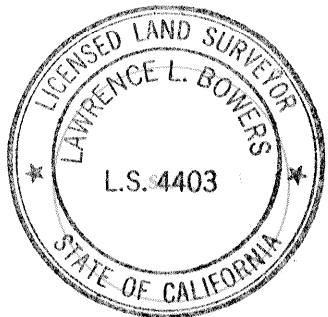
Found 3/4" Iron Pipe Monument well set over existing monument.

A description of the physical condition of the monument as found and as set or reset: _____

SURVEYOR'S STATEMENT

This Corner Record was prepared by me or under my direction in conformance with the Land Surveyors' Act on 10-1 1991.

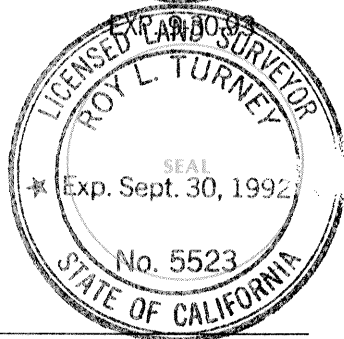
Signed [Signature] L.S. or R.C.E. Number _____



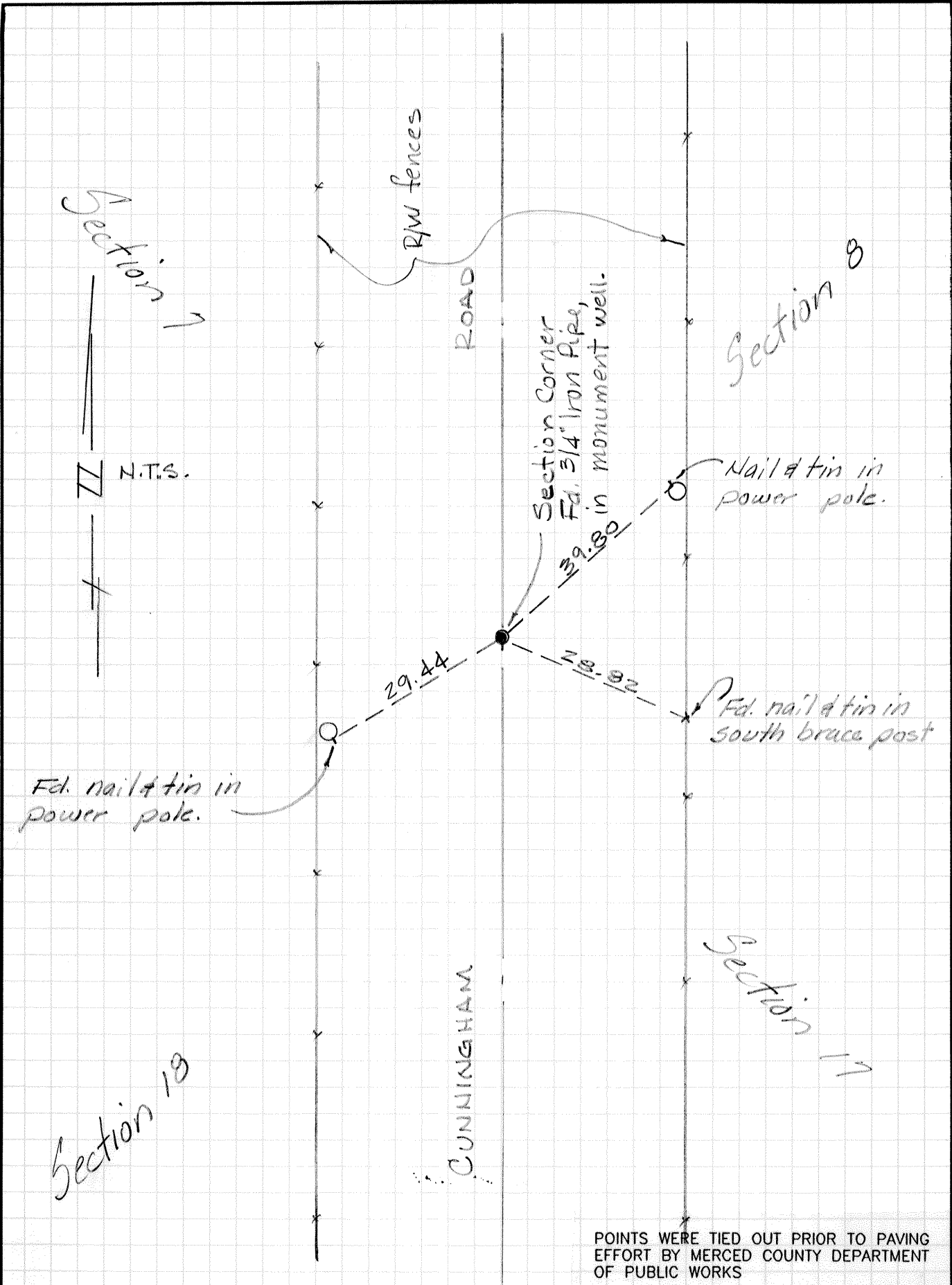
COUNTY SURVEYOR'S STATEMENT

This Corner Record was received 10-2 - 1991 and examined and filed 10-3 1991.

Signed [Signature] Title Dep Co Sur



County Surveyor's Comment _____



POINTS WERE TIED OUT PRIOR TO PAVING EFFORT BY MERCED COUNTY DEPARTMENT OF PUBLIC WORKS