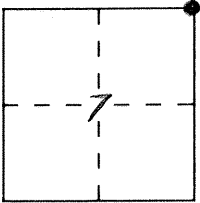


CORNER RECORD

Document Number 1328

City of \_\_\_\_\_ County of MERCED, California

Brief Legal Description N.E. Corner Section 7 T.8S., R.16E.



CORNER TYPE

Government Corner  Control   
Meander  Property   
Rancho  Other   
Date of Survey 4-26-91

COORDINATES  
(Optional)

N. \_\_\_\_\_  
E. \_\_\_\_\_  
Zone \_\_\_\_\_ Datum \_\_\_\_\_  
Elev. \_\_\_\_\_

Corner — Left as found  Found and tagged  Established  Reestablished  Rebuilt

Identification and type of corner found: Evidence used to identify or procedure used to establish or reestablish the corner:

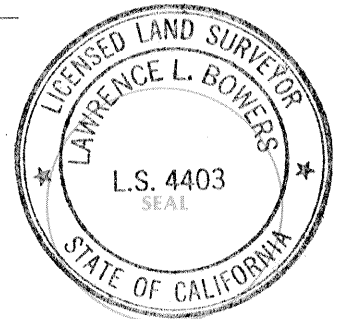
Found 2" Iron Pipe. Monument well set over existing monument, down 1 3/4

A description of the physical condition of the monument as found and as set or reset: \_\_\_\_\_

SURVEYOR'S STATEMENT

This Corner Record was prepared by me or under my direction in conformance with the Land Surveyors' Act on 10-1 1991.

Signed [Signature] L.S. or R.C.E. Number \_\_\_\_\_



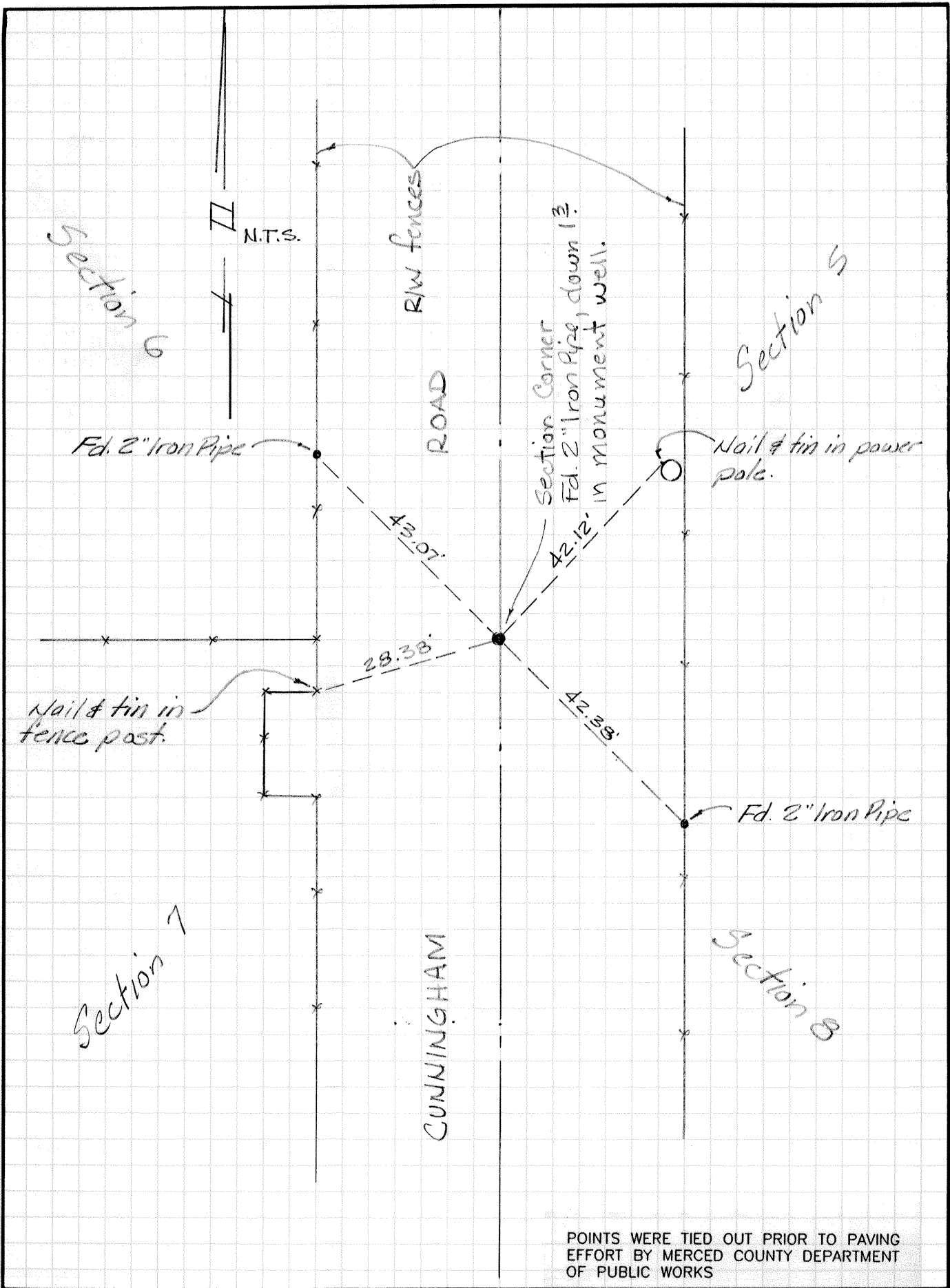
COUNTY SURVEYOR'S STATEMENT

This Corner Record was received 10-2 1991 and examined and filed 10-3 1991.

Signed [Signature] Title Dep Co. Sec



County Surveyor's Comment \_\_\_\_\_



POINTS WERE TIED OUT PRIOR TO PAVING  
EFFORT BY MERCED COUNTY DEPARTMENT  
OF PUBLIC WORKS