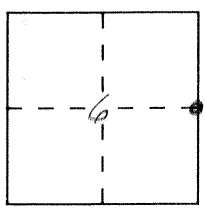


CORNER RECORD

Document Number 1327

City of _____ County of _____, California

Brief Legal Description E 1/4 Corner Section 6 T.B.S., R 16 E



CORNER TYPE

**COORDINATES
(Optional)**

Government Corner Control
Meander Property
Rancho Other
Date of Survey 4-26-91

N. _____
E. _____
Zone _____ Datum _____
Elev. _____

Corner — Left as found Found and tagged Established Reestablished Rebuilt

Identification and type of corner found: Evidence used to identify or procedure used to establish or reestablish the corner:

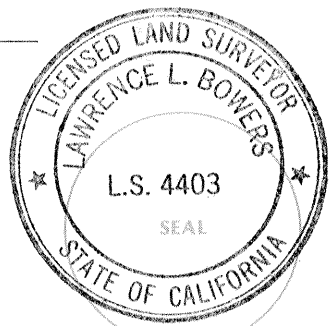
Dug down 4", found nothing.

A description of the physical condition of the monument as found and as set or reset: _____

SURVEYOR'S STATEMENT

This Corner Record was prepared by me or under my direction in conformance with the Land Surveyors' Act on 10-1 1991.

Signed [Signature] L.S. or R.C.E. Number _____



EXP: 9-30-93

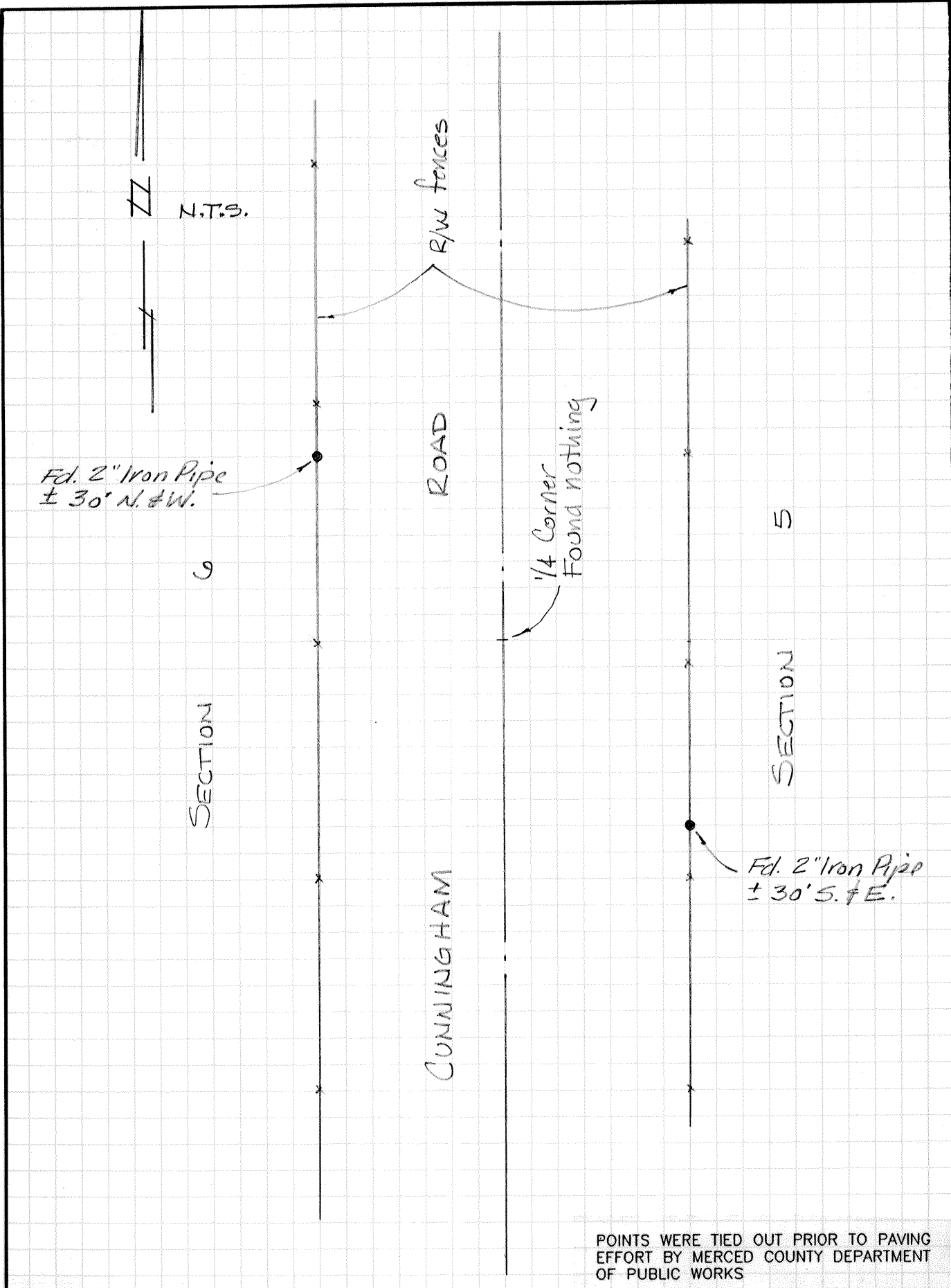
COUNTY SURVEYOR'S STATEMENT

This Corner Record was received 10-2 1991 and examined and filed 10-3 1991.

Signed [Signature] Title Dep Co. Sur.



County Surveyor's Comment _____



POINTS WERE TIED OUT PRIOR TO PAVING
EFFORT BY MERCED COUNTY DEPARTMENT
OF PUBLIC WORKS