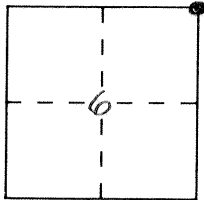


# CORNER RECORD

Document Number 1326

City of \_\_\_\_\_ County of MERCED, California

Brief Legal Description N.E. Corner Section 6 T.8S., R.16E.



### CORNER TYPE

Government Corner  Control   
 Meander  Property   
 Rancho  Other   
 Date of Survey 4-26-91

### COORDINATES (Optional)

N. \_\_\_\_\_  
 E. \_\_\_\_\_  
 Zone \_\_\_\_\_ Datum \_\_\_\_\_  
 Elev. \_\_\_\_\_

Corner — Left as found  Found and tagged  Established  Reestablished  Rebuilt

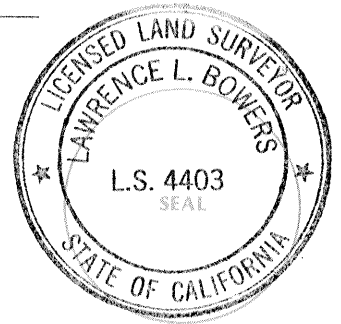
Identification and type of corner found: Evidence used to identify or procedure used to establish or reestablish the corner:  
Found 2" Iron Pipe, down 1<sup>3</sup>. Monument well set over existing monument, down 2<sup>3</sup>.

A description of the physical condition of the monument as found and as set or reset: \_\_\_\_\_  
 \_\_\_\_\_  
 \_\_\_\_\_

### SURVEYOR'S STATEMENT

This Corner Record was prepared by me or under my direction in conformance with the Land Surveyors' Act on 10-1 1991.

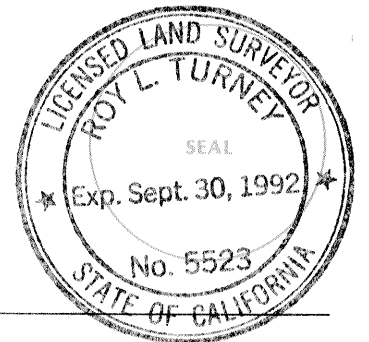
Signed [Signature] L.S. or R.C.E. Number \_\_\_\_\_



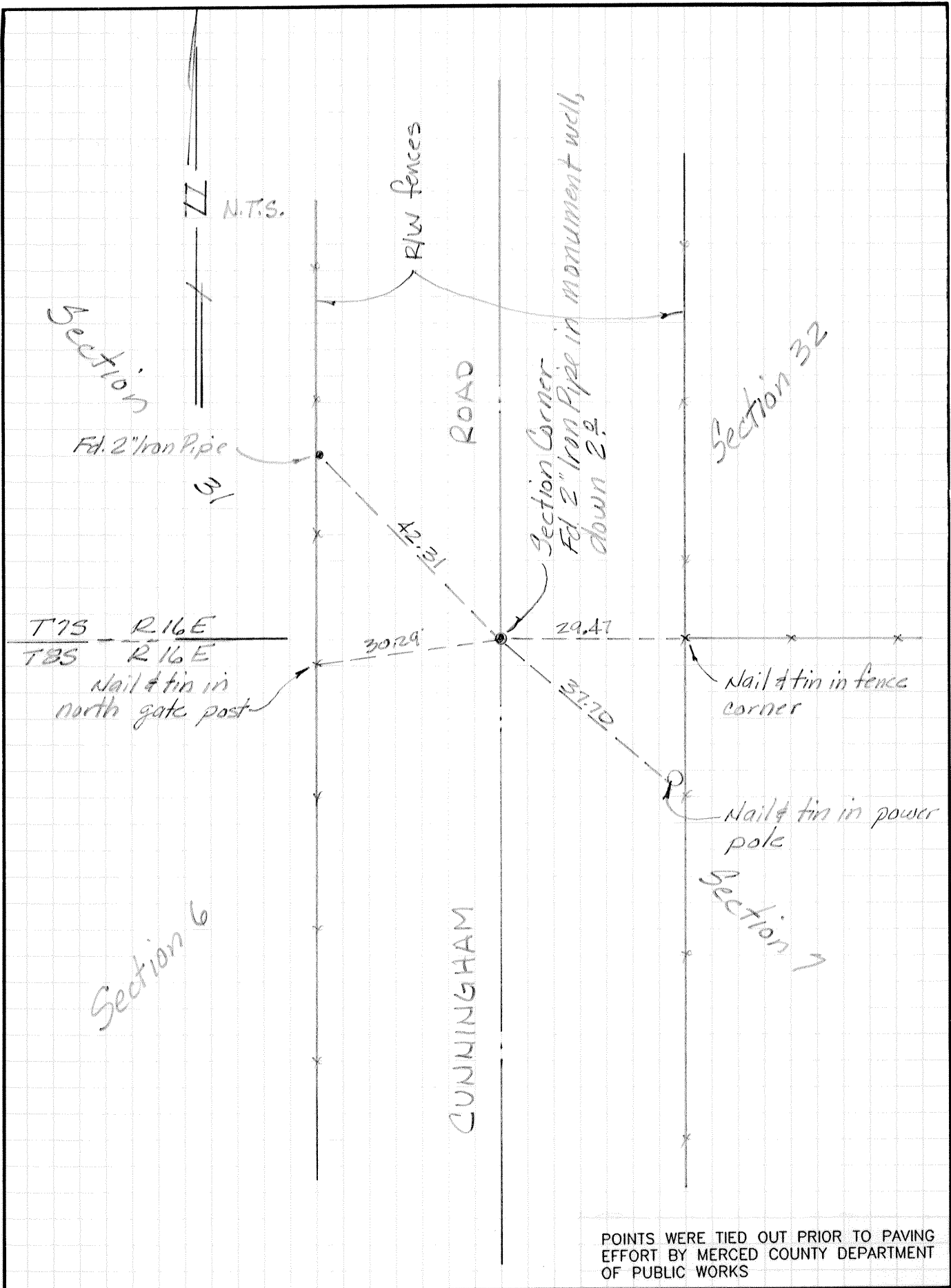
### COUNTY SURVEYOR'S STATEMENT

This Corner Record was received 10-2 1991 and examined and filed 10-2 1991.

Signed [Signature] Title Dep. Co. Sur.



County Surveyor's Comment \_\_\_\_\_  
 \_\_\_\_\_  
 \_\_\_\_\_



POINTS WERE TIED OUT PRIOR TO PAVING EFFORT BY MERCED COUNTY DEPARTMENT OF PUBLIC WORKS