

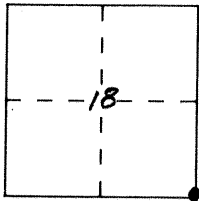
CORNER RECORD

Document Number 1300

City of _____

County of MERCED, California

Brief Legal Description S.E. COR. SEC. 18 5/12



CORNER TYPE

Government Corner Control
Meander Property
Rancho Other
Date of Survey 8-11-92

COORDINATES
(Optional)

N. _____
E. _____
Zone _____ Datum _____
Elev. _____

Corner — Left as found Found and tagged Established Reestablished Rebuilt

Identification and type of corner found: Evidence used to identify or procedure used to establish or reestablish the corner:

FD 1 1/2" dia IR. 13766 IN Mon. Box

BK. 658-20

A description of the physical condition of the monument as found and as set or reset:

O.K. 8-30-93

SURVEYOR'S STATEMENT

This Corner Record was prepared by me or under my direction in conformance with the Land Surveyors' Act on Sept. 7 19 93.

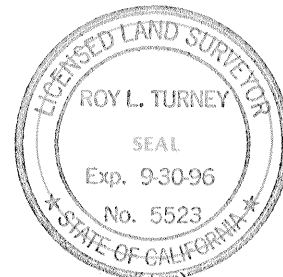
Signed [Signature] L.S. or R.C.E. Number _____



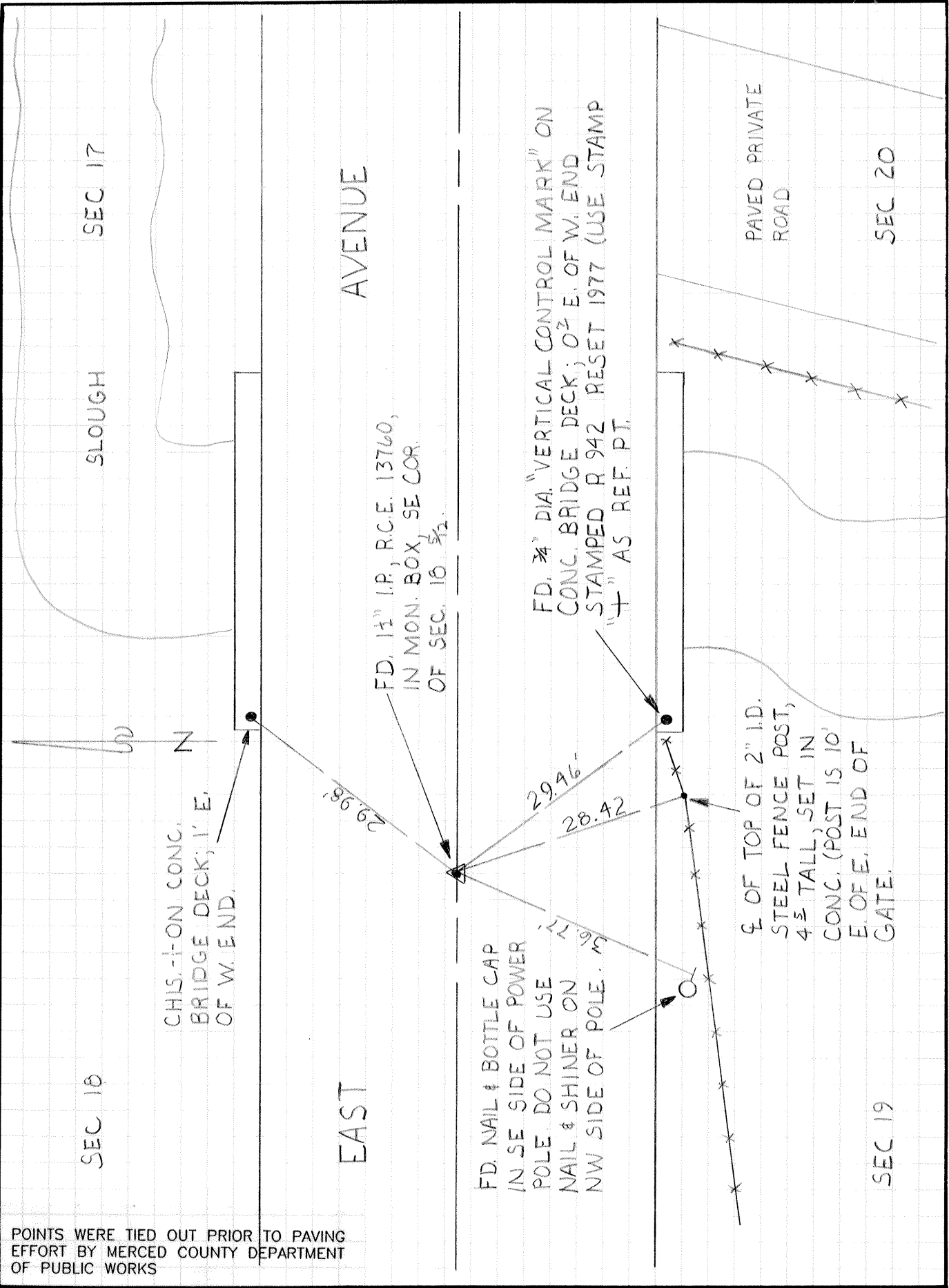
COUNTY SURVEYOR'S STATEMENT

This Corner Record was received SEPT. 19 93 and examined and filed SEPT. 16 19 93.

Signed [Signature] Title DEP. CO. SUR.



County Surveyor's Comment See P.M. BK. 37-15



POINTS WERE TIED OUT PRIOR TO PAVING EFFORT BY MERCED COUNTY DEPARTMENT OF PUBLIC WORKS