

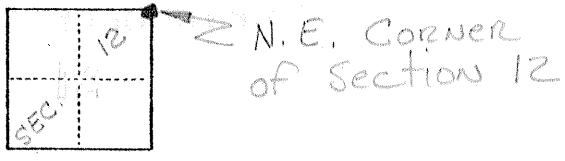
No 1299

CORNER RECORD

COUNTY OF Merced T. 5 S. R. 12 E., 13 E. M.T.D.B. & MERIDIAN CALIFORNIA

CORNER TYPE: GOV'T. CORNER MEANDER RANCHO CONTROL OTHER

CORNER IDENTIFICATION — DATE OF VISIT 1-21-1976



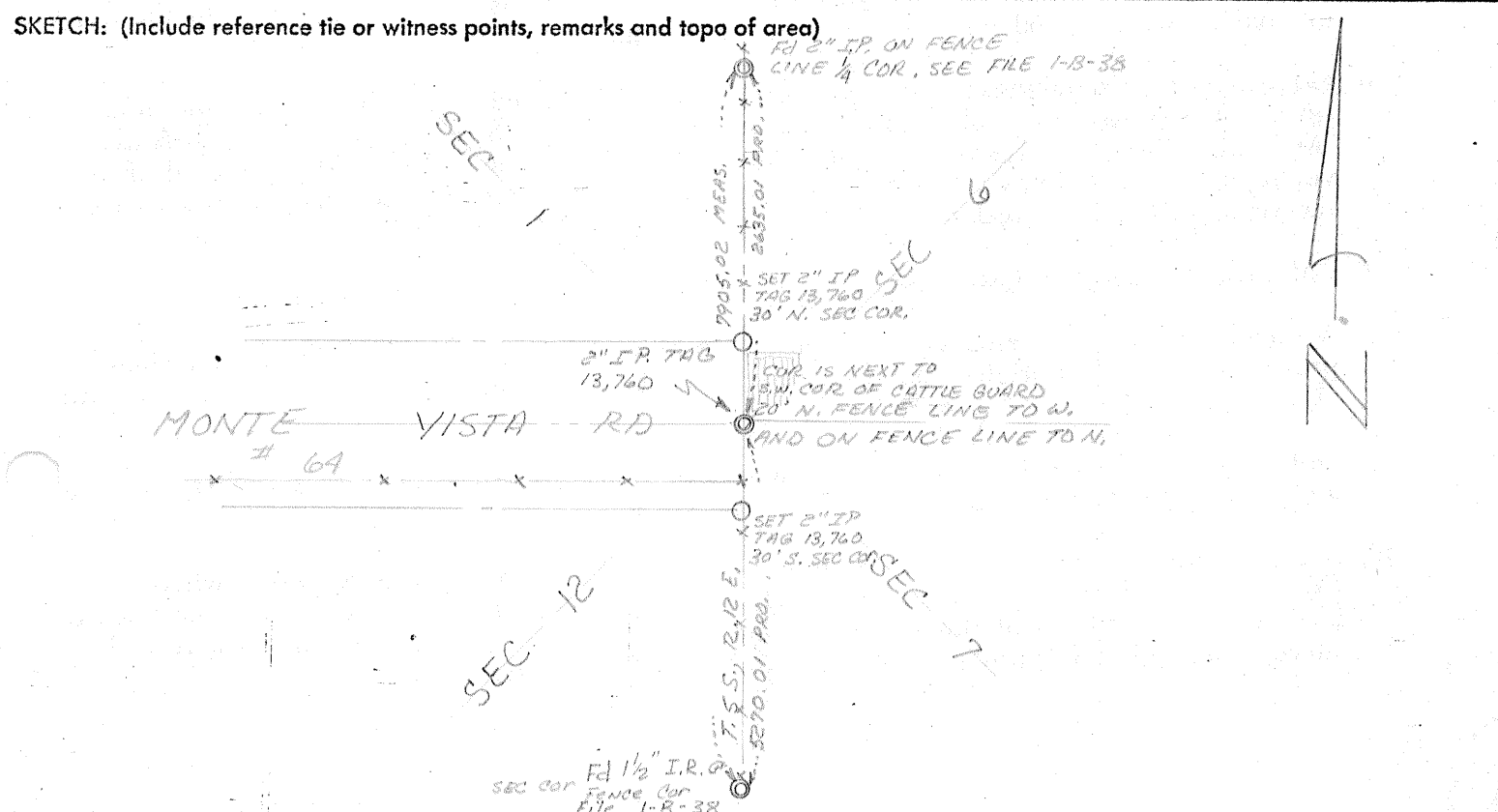
CORNER — LEFT AS FOUND FOUND AND TAGGED REESTABLISHED CORNER REBUILT

PHYSICAL DESCRIPTION OF CORNER FOUND; EVIDENCE AND METHOD USED TO IDENTIFY OR REESTABLISH
Set 2" Iron Pipe Tagged R.C.E. 13,760. Set by Proportionation From Sec Cor Fd to south Sec 12, AND 1/4 corner of section 1 to North. Used Gov't Record distance.

PHYSICAL DESCRIPTION OF MONUMENTS REBUILT OR PERPETUATED
Set 2" Iron Pipe, Tagged R.C.E. 13,760
INFORMATION IN MERCED COUNTY FIELD BOOK 710 Pg 48

CALIFORNIA COORDINATE SYSTEM ORDER: FIRST SECOND THIRD
STATIONS USED: NGS (USC & GS) STATE COUNTY OTHER STATION _____ STATION _____
ZONE _____ ELEVATION _____ NORTHINGS (Y) _____ EASTINGS (X) _____

(Fold)



SURVEYOR'S CERTIFICATE
THIS CORNER RECORD WAS PREPARED BY ME OR UNDER MY DIRECTION IN CONFORMANCE WITH THE LAND SURVEYORS ACT ON _____ 19_____
SIGNED: _____
L.S. or R.C.E. No.: _____
SEAL

COUNTY SURVEYOR'S CERTIFICATE
THE CORNER RECORD WAS RECEIVED _____ 19_____
AND EXAMINED AND FILED _____ 19_____
BY: _____
TITLE: _____
DOCUMENT No. 1299
STATEMENT ON BACK OF SHEET YES NO