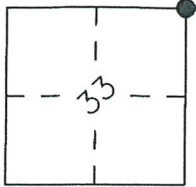


# CORNER RECORD

Agency Index 1286  
Document Number \_\_\_\_\_

City of N/A County of Merced, California  
Brief Legal Description Northeast corner of Section 33, T. 5 S., R. 11 E., Mount Diablo Base and Meridian.



### CORNER TYPE

Government Corner  Control  
Meander  Property  
Rancho  Other

Date of Survey 1-4-18

### COORDINATES (Optional)

N. \_\_\_\_\_ E. \_\_\_\_\_  
Elevation. \_\_\_\_\_  
Units Metric  U.S. Survey Foot   
Horizontal Datum \_\_\_\_\_  
Zone \_\_\_\_\_ Epoch Date \_\_\_\_\_  
Vertical Datum \_\_\_\_\_

Complies with Public Resources Code §§8801-8819  
 Complies with Public Resources Code §§8890-8902

PLS Act Ref.:  8765(d)  8771  8773  Other:  
Corner/Monument:  Left as found  Established  Rebuilt  Pre-Construction  
 Found and tagged  Reestablished  Referenced  Post-Construction

Narrative of corner identified and monument as found, set, reset, replaced, or removed:  
 See sheet #2 for description(s):

Found 3/4" Iron Pipe tagged LS 3733, shown as the Northeast corner of Section 33 on Parcel Map filed in Book 52 of Parcel Maps, at Page 35-36, Merced County Records.

### SURVEYOR'S STATEMENT

This Corner Record was prepared by me or under my direction in conformance with the Professional Land Surveyor's Act on 2-5-18

Signed [Signature] P.L.S. or R.C.E. No. 7604



### COUNTY SURVEYOR'S STATEMENT

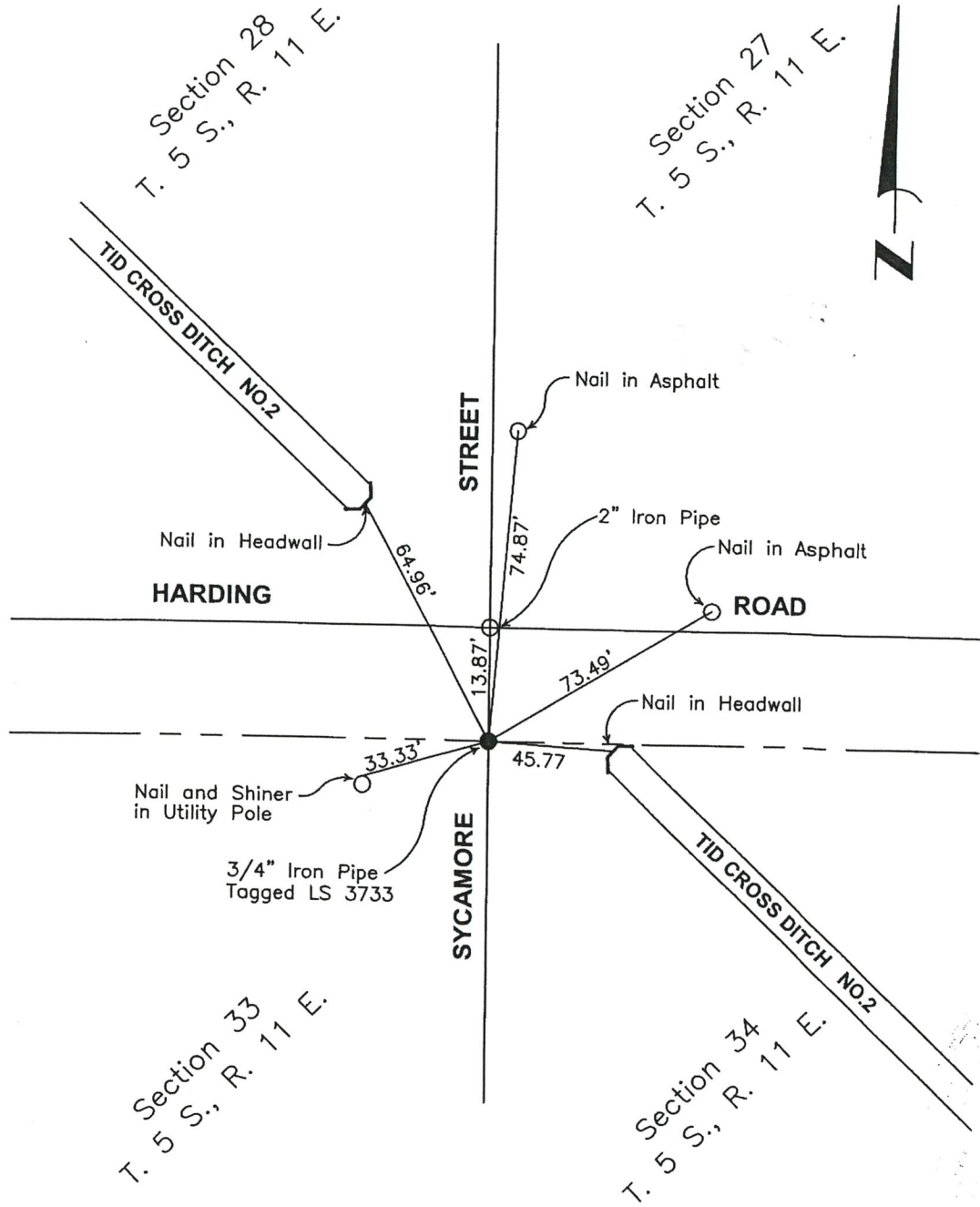
This Corner Record was reviewed FEBRUARY 5, 2018 and examined and filed FEBRUARY 15, 2018

Signed [Signature] P.L.S. or R.C.E. No. 8664

Title COUNTY SURVEYOR

County Surveyor's Comment





- Found 3/4" Iron Pipe tagged LS 3733
- Tie point as noted.