

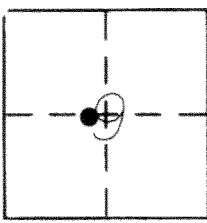
CORNER RECORD

Document Number 1242-CC

City of _____

County of MERCED, California

Brief Legal Description N.W. CORNER PARCEL 2, 62 P.M. 1, M.C.R.



T7S, R14E

CORNER TYPE

Government Corner Control
Meander Property
Rancho Other
Date of Survey 11-30-2011

COORDINATES (Optional)

N. _____
E. _____
Zone NAD27 NAD83
NAD83 Epoch _____
Elev. _____
Vert. Datum: NGVD29 NAVD88
Meas. Units: Metric Imperial

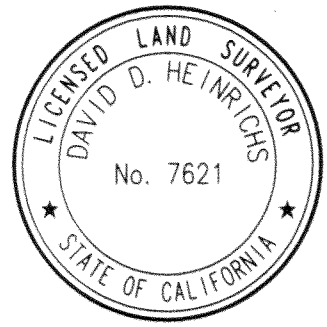
Corner - Left as found Found and tagged Established Reestablished Rebuilt

Identification and type of corner found: Evidence used to identify or procedure used to establish or reestablish the corner:
FOUND N.W. CORNER PARCEL 1 AND N.E. CORNER PARCEL 2, 62 P.M. 1, M.C.R.
REESTABLISHED N.W. CORNER PARCEL 2 CENTERED BETWEEN THE TWO FOUND MONUMENTS.

A description of the physical condition of the monument as found and as set or reset: _____
SET 3/4" IRON PIPE WITH L.S. 7621 TAG, DOWN 6", SEE PLAT ON REVERSE SIDE.

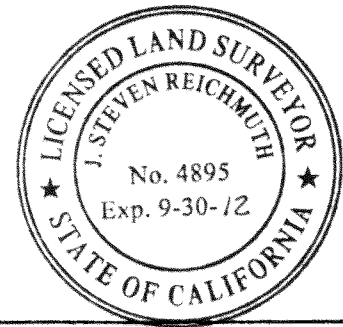
SURVEYOR'S STATEMENT

This Corner Record was prepared by me or under my direction in conformance with the Land Surveyor's Act on DECEMBER 2, 2011
Signed [Signature] P.L.S. or R.G.E. No. 7621



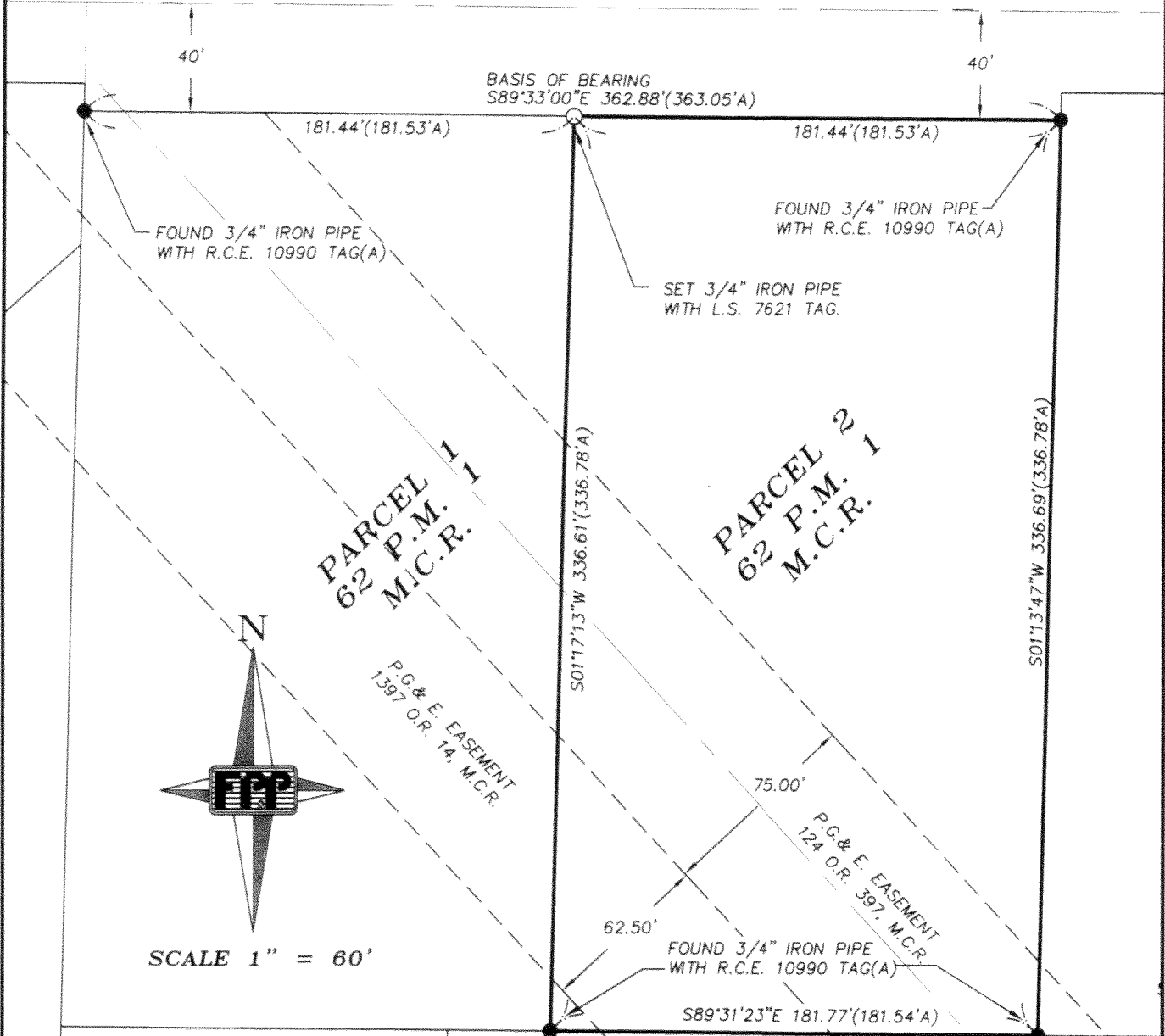
COUNTY SURVEYOR'S STATEMENT

This Corner Record was received December 9, 2011
and examined and filed December 12, 2011
Signed [Signature] P.L.S. or R.G.E. No. 4895
Title Deputy County Surveyor



County Surveyor's Comment _____

D U N N R O A D



PARCEL 1
62 P.M. 1
M.C.R.

PARCEL 2
62 P.M. 1
M.C.R.

PG. & E. EASEMENT
1397 O.R. 14, M.C.R.

PG. & E. EASEMENT
124 O.R. 397, M.C.R.

SCALE 1" = 60'

REFERENCES

(A) PARCEL MAP FOR DAVID PULSIPHER & BRUCE MONTOYA, 62 P.M. 1, M.C.R.

BASIS OF BEARING

THE BEARING OF $S89^{\circ}33'00''E$ ALONG THE NORTH LINE OF PARCEL 1 AND 2 AS SHOWN ON (A), IS THE BASIS FOR ALL BEARINGS SHOWN ON THIS PLAT.