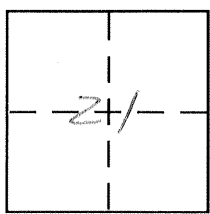


CORNER RECORD

Document Number 1241-R&S

City of _____ County of Merced, California

Brief Legal Description Parcel 2, Vol. 7 of Parcel Maps Page 38
Merced County Records



6/10

CORNER TYPE

- Government Corner Control
- Meander Property
- Rancho Other
- Date of Survey 1-16-2006

COORDINATES (Optional)

- N. _____
- E. _____
- Zone _____ NAD27 NAD83
- NAD83 Epoch _____
- Elev. _____
- Vert. Datum: NGVD29 NAVD88
- Meas. Units: Metric Imperial

Corner - Left as found Found and tagged Established Reestablished Rebuilt

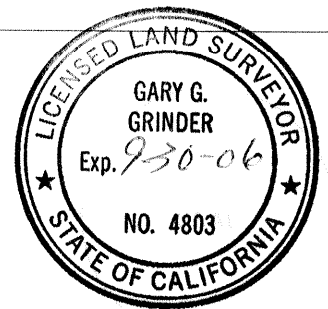
Identification and type of corner found: Evidence used to identify or procedure used to establish or reestablish the corner:
Set 1 3/8" outside diameter iron pipes &
tagged L.S. 4803 at parcel 2
corners, see reverse side.

A description of the physical condition of the monument as found and as set or reset:
See reverse side

SURVEYOR'S STATEMENT

This Corner Record was prepared by me or under my direction in conformance with the Land Surveyor's Act on January 18, 2006

Signed Gary G. Grinder P.L.S or R.C.E. No. L.S. 4803



COUNTY SURVEYOR'S STATEMENT

This Corner Record was received May 2, 2006

and examined and filed May 11, 2006

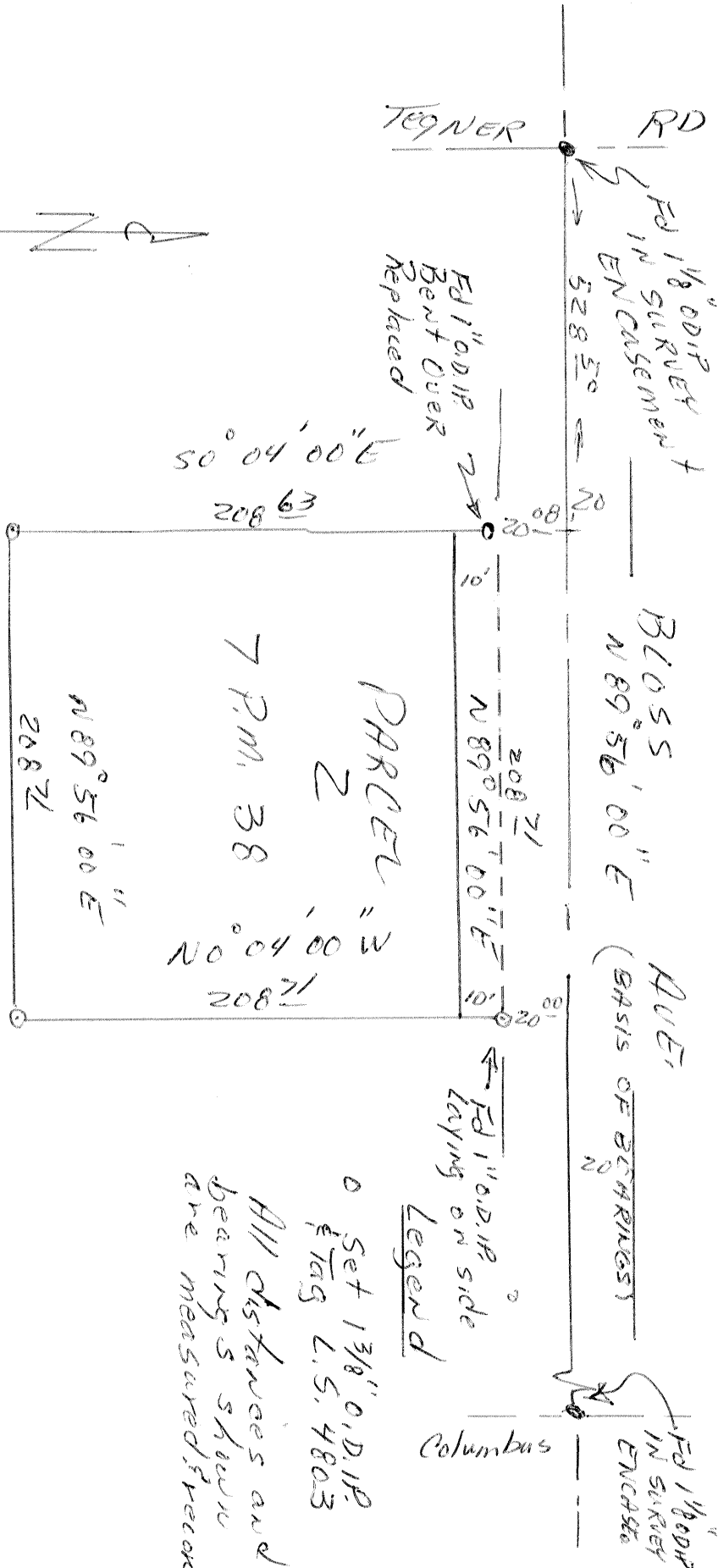
Signed J. St. P. P.L.S or R.C.E. No. 4895

Title Dep. County Surveyor



County Surveyor's Comment _____

Not to Scale



Legend

o Set 1 3/8" O.D.I.P.
 & Tag L.S. 4803

All distances and bearings shown are measured & record