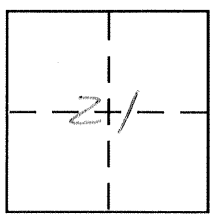


**CORNER RECORD**

Document Number 1241-R&S

City of \_\_\_\_\_ County of Merced, California

Brief Legal Description Parcel 2, Vol. 7 of Parcel Maps Page 38  
Merced County Records



6/10

**CORNER TYPE**

- Government Corner  Control
- Meander  Property
- Rancho  Other
- Date of Survey 1-16-2006

**COORDINATES (Optional)**

- N. \_\_\_\_\_
- E. \_\_\_\_\_
- Zone \_\_\_\_\_ NAD27  NAD83
- NAD83 Epoch \_\_\_\_\_
- Elev. \_\_\_\_\_
- Vert. Datum: NGVD29  NAVD88
- Meas. Units: Metric  Imperial

Corner – Left as found  Found and tagged  Established  Reestablished  Rebuilt

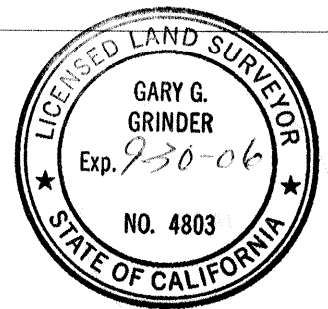
Identification and type of corner found: Evidence used to identify or procedure used to establish or reestablish the corner:  
Set 1 3/8" outside diameter iron pipes &  
tagged L.S. 4803 at parcel 2  
corners, see reverse side.

A description of the physical condition of the monument as found and as set or reset:  
See reverse side

**SURVEYOR'S STATEMENT**

This Corner Record was prepared by me or under my direction in conformance with the Land Surveyor's Act on January 18, 2006

Signed Gary G. Grinder P.L.S or R.C.E. No. L.S. 4803



**COUNTY SURVEYOR'S STATEMENT**

This Corner Record was received May 2, 2006

and examined and filed May 11, 2006

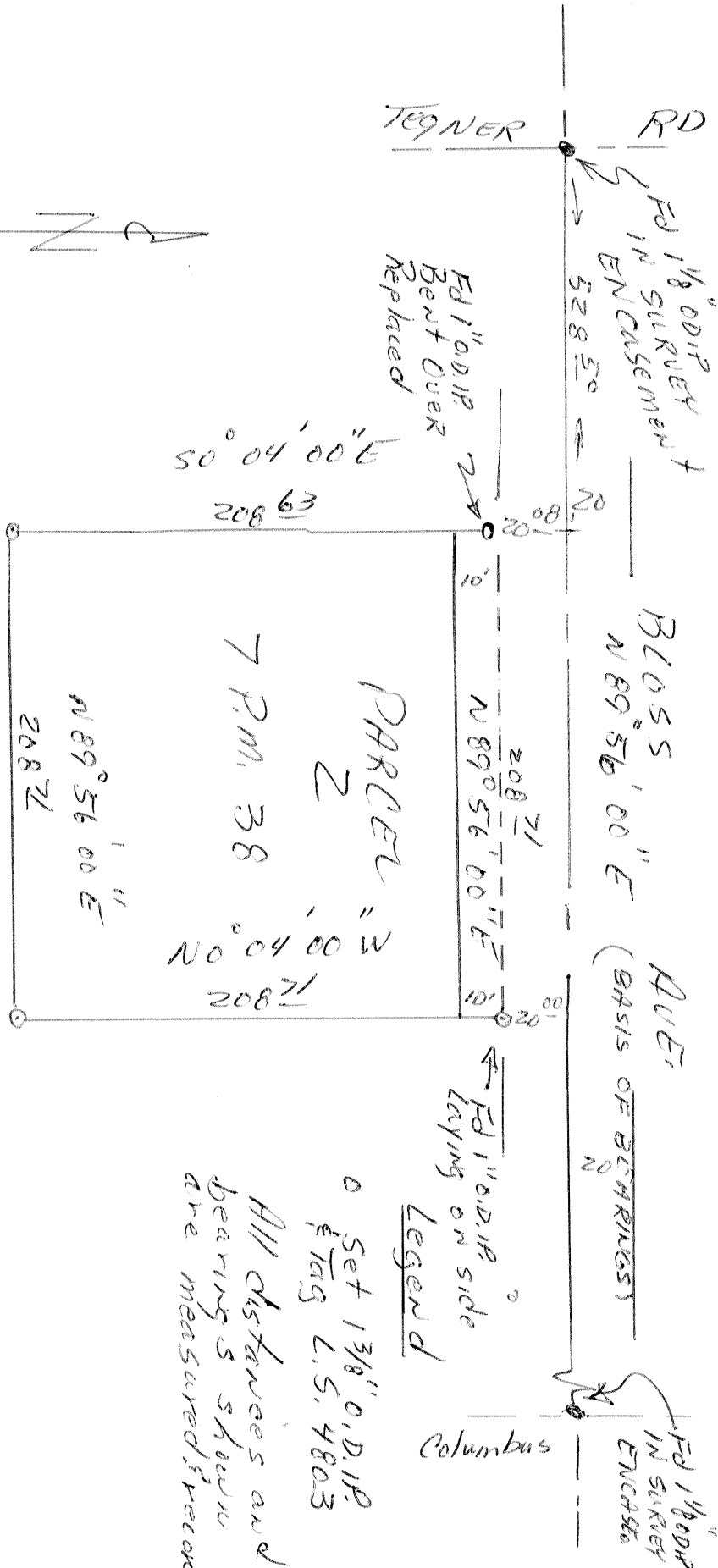
Signed [Signature] P.L.S or R.C.E. No. 4895

Title Dep. County Surveyor



County Surveyor's Comment \_\_\_\_\_

Not to Scale



Legend

o Set 1 3/8" O.D.I.P.  
 & Tag L.S. 4803

All distances and bearings shown are measured & record