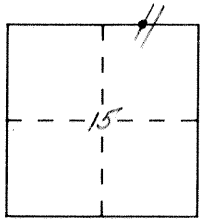


# CORNER RECORD

Document Number 1167 L

City of \_\_\_\_\_ County of MERCED, California

Brief Legal Description W. 1/4 LINE CANAL DRIVE 1/4 2<sup>ND</sup> QTR SO. SEC. 10 & 15 T6S; R11E.



### CORNER TYPE

- Government Corner
- Meander
- Rancho
- Date of Survey 3-13-92
- Control
- Property
- Other

### COORDINATES (Optional)

N. \_\_\_\_\_  
 E. \_\_\_\_\_  
 Zone \_\_\_\_\_ Datum \_\_\_\_\_  
 Elev. \_\_\_\_\_

Corner — Left as found  Found and tagged  Established  Reestablished  Rebuilt

Identification and type of corner found: Evidence used to identify or procedure used to establish or reestablish the corner:

F.D. 3/4" red. 93 PER 5 R. S. 2.  
 \_\_\_\_\_  
 \_\_\_\_\_  
 \_\_\_\_\_  
 \_\_\_\_\_

BK 643-10,11

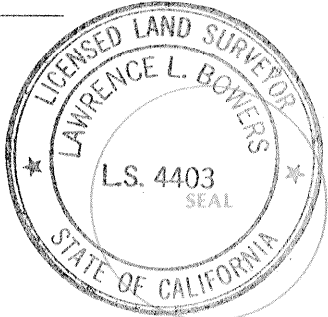
A description of the physical condition of the monument as found and as set or reset: \_\_\_\_\_

Monument box set over existing monument.  
8-30-93

### SURVEYOR'S STATEMENT

This Corner Record was prepared by me or under my direction in conformance with the Land Surveyors' Act on Sept. 3 1993

Signed [Signature] L.S. or R.C.E. Number \_\_\_\_\_

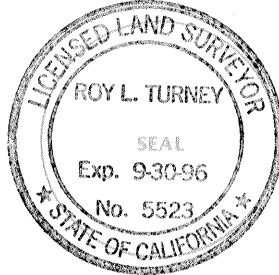


EXP. 9-30-93

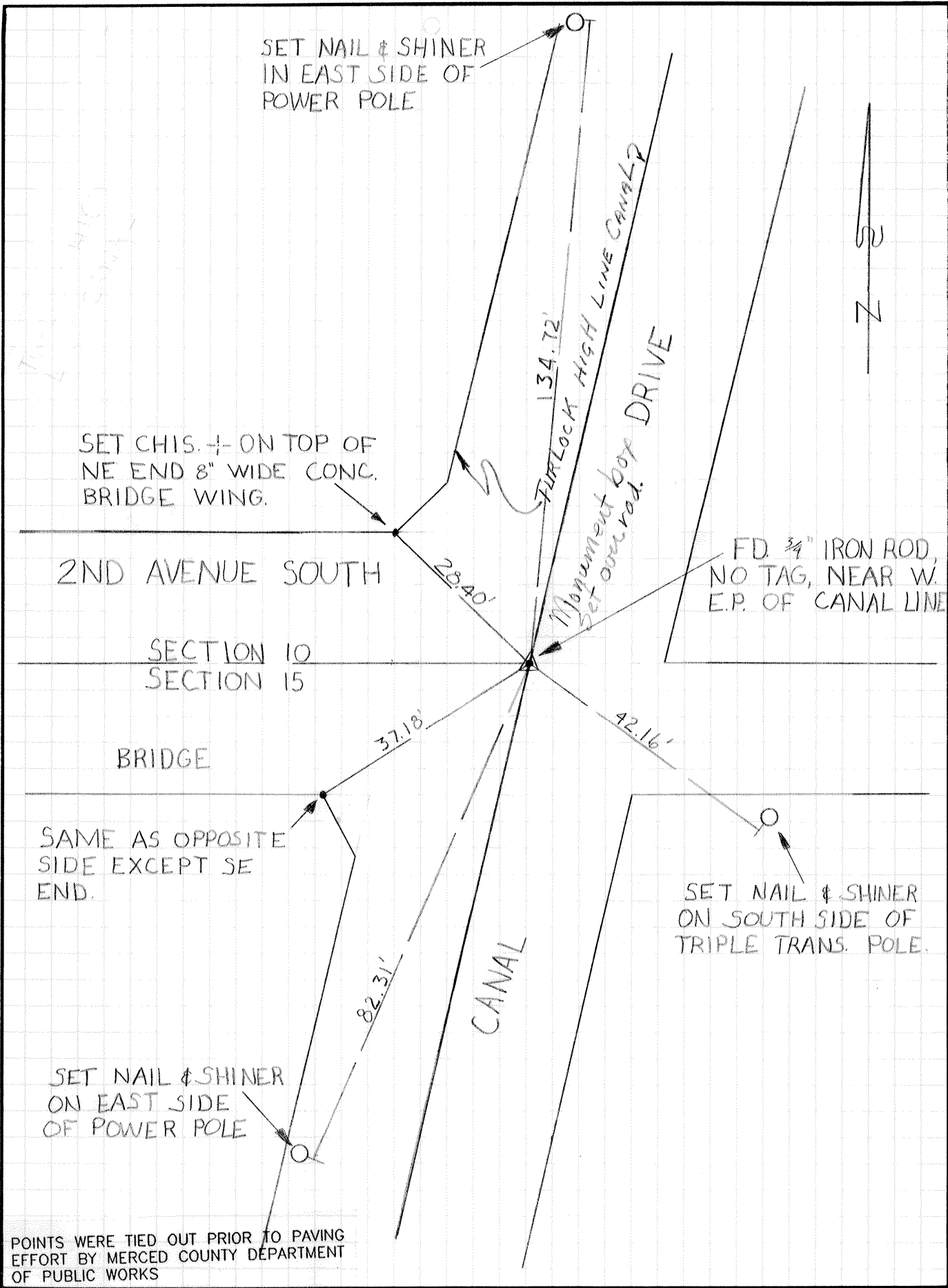
### COUNTY SURVEYOR'S STATEMENT

This Corner Record was received SEPT. 1993 and examined and filed SEPT. 24 1993.

Signed [Signature] Title DEP CO. SUR.



County Surveyor's Comment \_\_\_\_\_  
 \_\_\_\_\_  
 \_\_\_\_\_  
 \_\_\_\_\_



POINTS WERE TIED OUT PRIOR TO PAVING EFFORT BY MERCED COUNTY DEPARTMENT OF PUBLIC WORKS