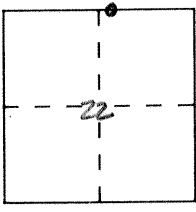


**CORNER RECORD**

Document Number 1129

City of \_\_\_\_\_ County of Merced, California

Brief Legal Description County Line monument



S/11

**CORNER TYPE**

- Government Corner
- Meander
- Rancho
- Date of Survey 8-12-92
- Control
- Property
- Other

**COORDINATES (Optional)**

N. \_\_\_\_\_  
 E. \_\_\_\_\_  
 Zone \_\_\_\_\_ Datum \_\_\_\_\_  
 Elev. \_\_\_\_\_

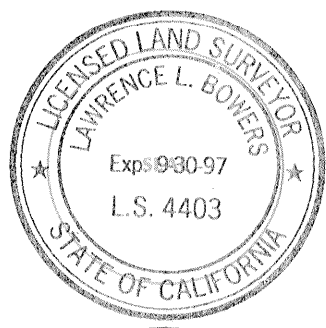
Corner — Left as found  Found and tagged  Established  Reestablished  Rebuilt

Identification and type of corner found: Evidence used to identify or procedure used to establish or reestablish the corner:  
 \_\_\_\_\_  
 \_\_\_\_\_  
 \_\_\_\_\_  
 \_\_\_\_\_

A description of the physical condition of the monument as found and as set or reset: \_\_\_\_\_  
Fd. 2" Iron Pipe.  
 \_\_\_\_\_  
OK. 8-30-93  
F.B. 658-25

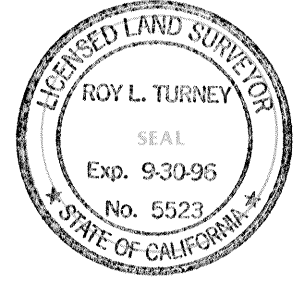
**SURVEYOR'S STATEMENT**

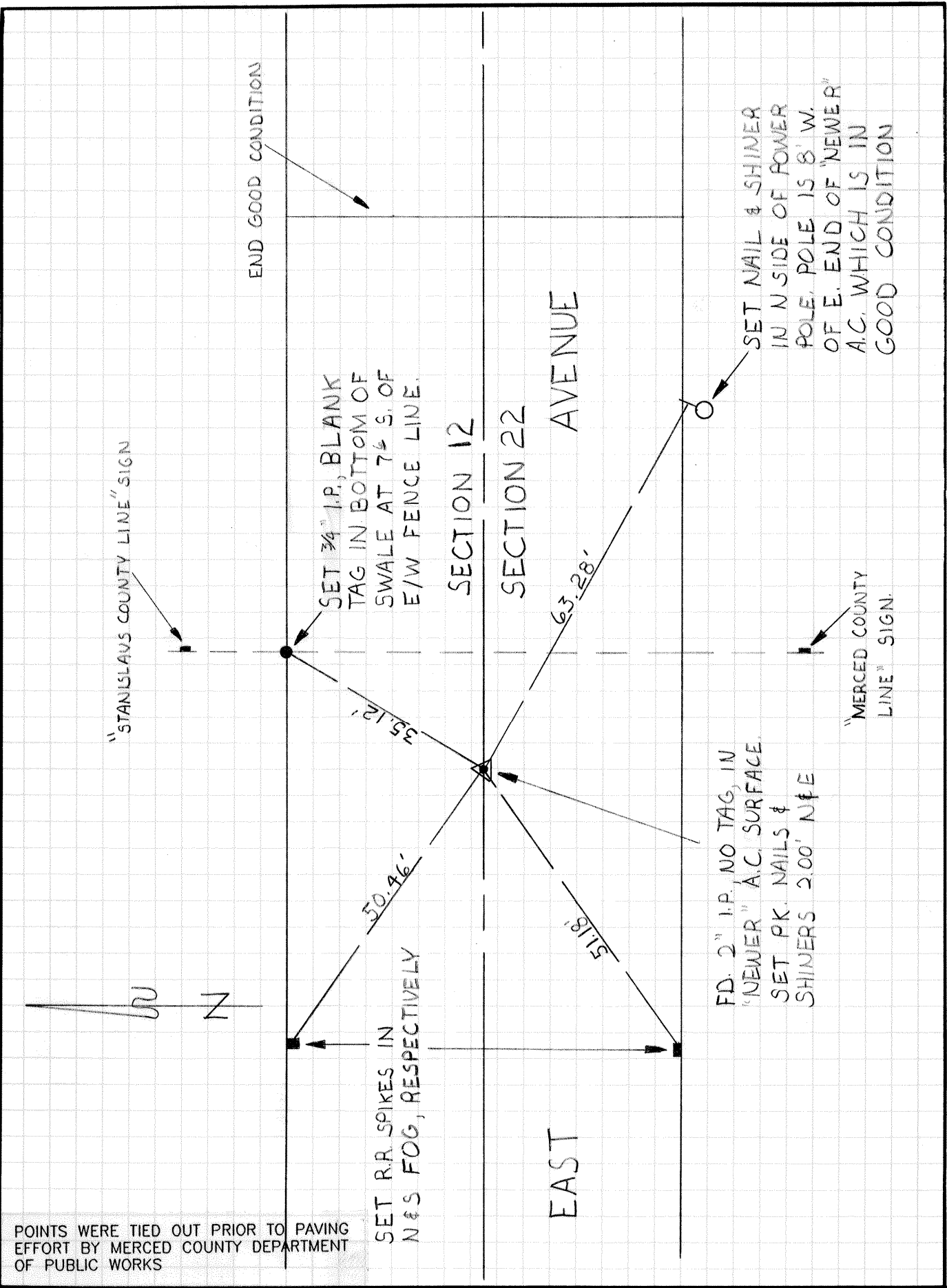
This Corner Record was prepared by me or under my direction in conformance with the Land Surveyors' Act on Sept. 7 19 93.  
 Signed [Signature] L.S. or R.C.E. Number \_\_\_\_\_



**COUNTY SURVEYOR'S STATEMENT**

This Corner Record was received SEPT. 19 93 and examined and filed SEPT. 16, 19 93.  
 Signed [Signature] Title DEP. Co. SUR.  
 County Surveyor's Comment \_\_\_\_\_





POINTS WERE TIED OUT PRIOR TO PAVING  
EFFORT BY MERCED COUNTY DEPARTMENT  
OF PUBLIC WORKS