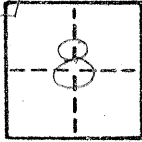


CORNER RECORD

COUNTY OF Merced T. 7S R. 14E Nth Diablo MERIDIAN CALIFORNIA

CORNER TYPE: GOVT. CORNER MEANDER RANCHO CONTROL OTHER

CORNER IDENTIFICATION — DATE OF VISIT February 13, 1979



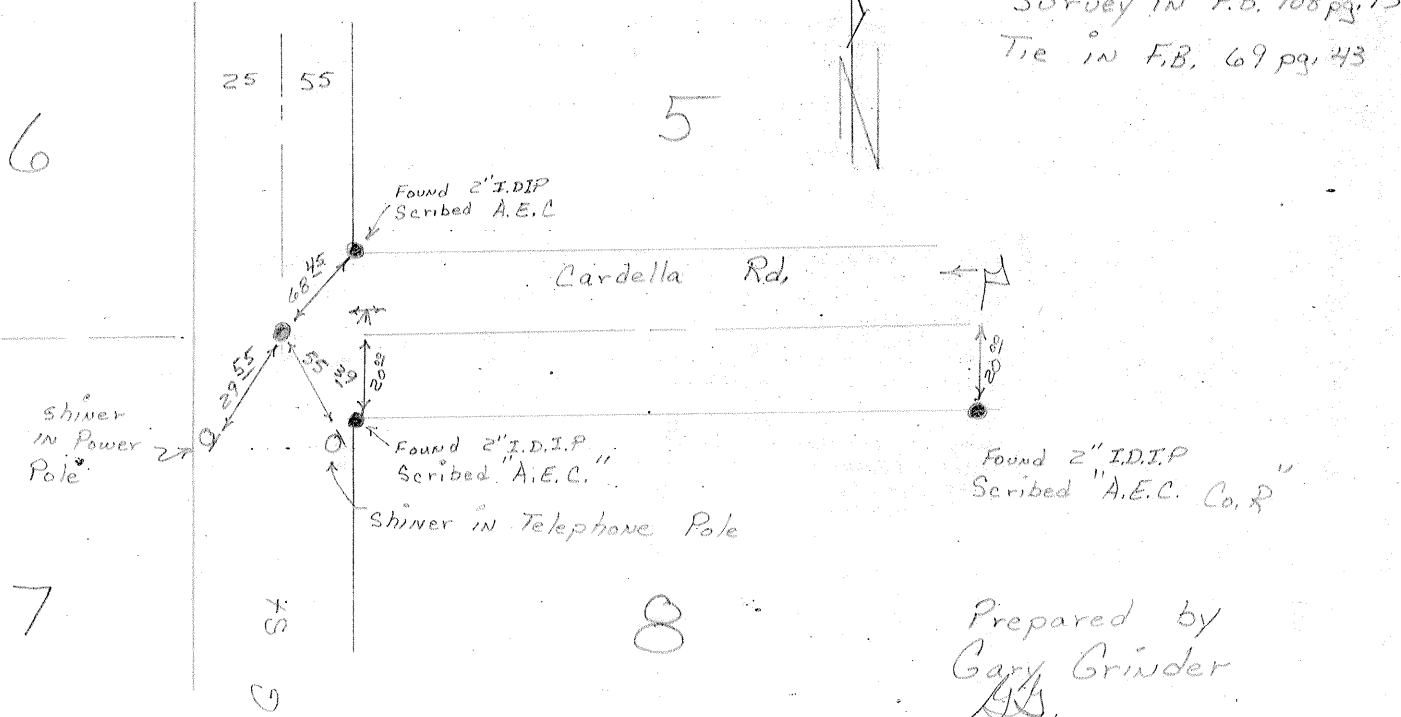
CORNER — LEFT AS FOUND FOUND AND TAGGED REESTABLISHED OBLITERATED CORNER REBUILT

PHYSICAL DESCRIPTION OF CORNER FOUND, EVIDENCE AND METHOD USED TO IDENTIFY OR REESTABLISH
Found 1 1/4" O.D.I.P. 1 3/8" down. Found by prolonging established line from east and measuring record distance

PHYSICAL DESCRIPTION OF MONUMENTS REBUILT OR PERPETUATED
Set 1 3/8" ODIP in survey encasement over the 1 1/4" ODIP, on July 22, 1980

CALIFORNIA COORDINATE SYSTEM ORDER: FIRST SECOND THIRD
 STATIONS USED: NGS (USC & GS) STATE COUNTY OTHER STATION _____ STATION _____
 ZONE _____ ELEVATION _____ NORTHINGS (Y) _____ EASTINGS (X) _____

SKETCH: (Includes reference tie or witness points, remarks and topo of area)



SURVEYOR'S CERTIFICATE
 THIS CORNER RECORD WAS PREPARED BY ME OR UNDER MY DIRECTION IN CONFORMANCE WITH THE LAND SURVEYORS ACT ON _____ 19_____
 SIGNED: _____
 L.S. or P.C.E. No.: _____
 SEAL

COUNTY SURVEYOR'S CERTIFICATE
 THE CORNER RECORD WAS RECEIVED 11/16 1982
 AND EXAMINED AND FILED 11/16/82
 BY: [Signature]
 TITLE: Merced County Surveyor
 DOCUMENT No. 1090
 STATEMENT ON BACK OF SHEET YES NO