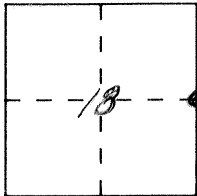


# CORNER RECORD

Document Number 1076

City of \_\_\_\_\_ County of MERCED, California

Brief Legal Description E 1/4 Corner Section 18 T8S R16E



### CORNER TYPE

Government Corner  Control   
 Meander  Property   
 Rancho  Other   
 Date of Survey 4-26-91

### COORDINATES (Optional)

N. \_\_\_\_\_  
 E. \_\_\_\_\_  
 Zone \_\_\_\_\_ Datum \_\_\_\_\_  
 Elev. \_\_\_\_\_

Corner — Left as found  Found and tagged  Established  Reestablished  Rebuilt

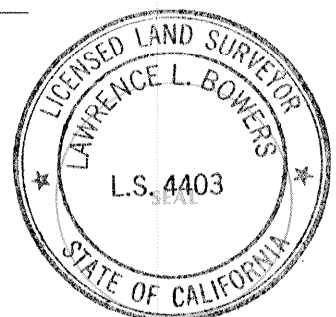
Identification and type of corner found: Evidence used to identify or procedure used to establish or reestablish the corner:  
Found 3/4" ornamental rod. Monument well set over existing monument.

A description of the physical condition of the monument as found and as set or reset: \_\_\_\_\_  
 \_\_\_\_\_  
 \_\_\_\_\_

### SURVEYOR'S STATEMENT

This Corner Record was prepared by me or under my direction in conformance with the Land Surveyors' Act on 10-1 1991.

Signed [Signature] L.S. or R.C.E. Number \_\_\_\_\_



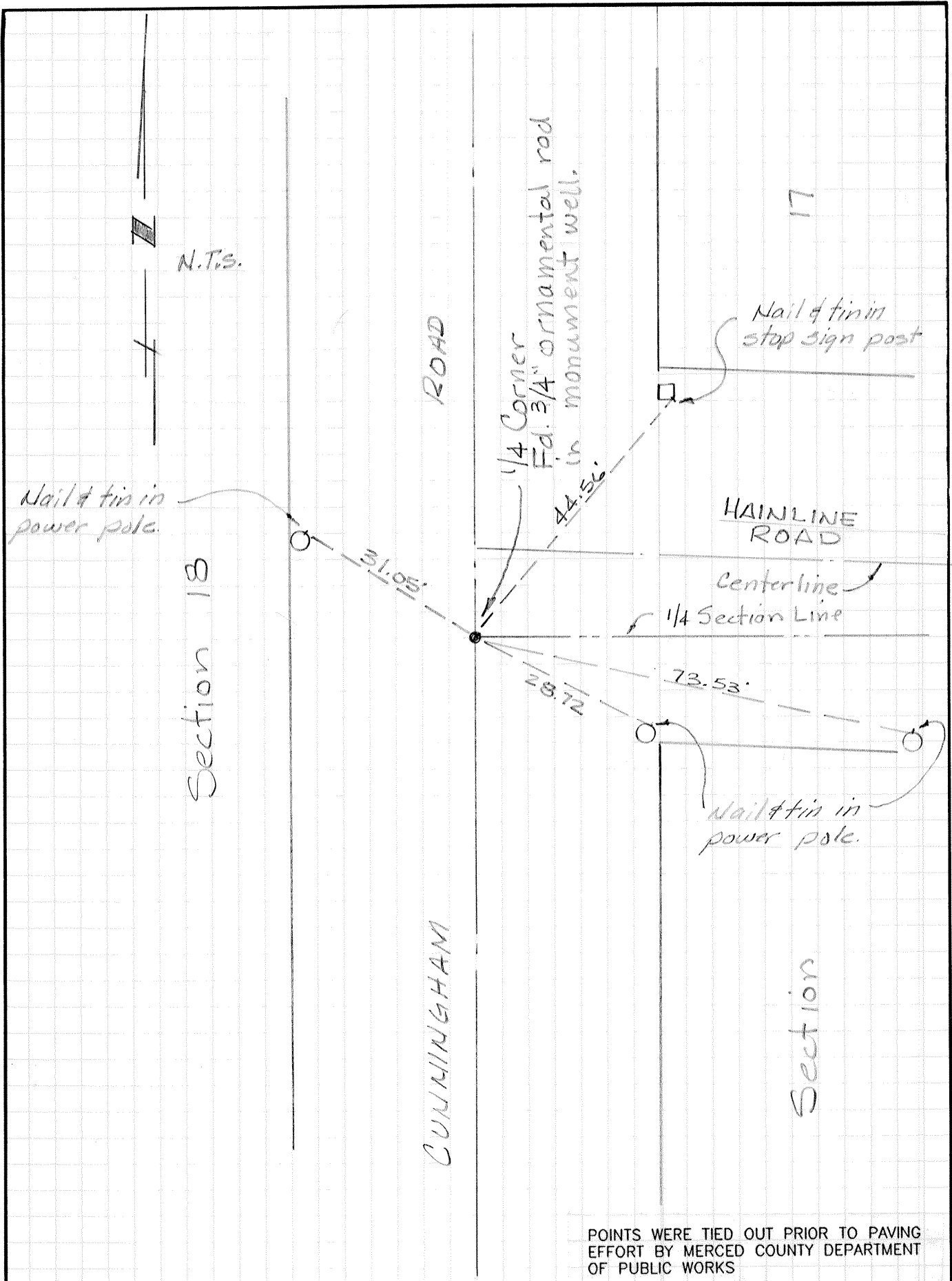
### COUNTY SURVEYOR'S STATEMENT

This Corner Record was received 10-2 1991 and examined and filed 10-3 1991.

Signed [Signature] Title Dep Co Sur



County Surveyor's Comment \_\_\_\_\_  
 \_\_\_\_\_  
 \_\_\_\_\_



POINTS WERE TIED OUT PRIOR TO PAVING  
EFFORT BY MERCED COUNTY DEPARTMENT  
OF PUBLIC WORKS