

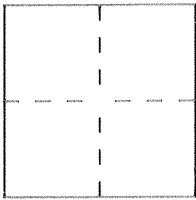
CORNER RECORD

Document Number 1330 UUU 1075 N

City of LE GRAND

County of MERCED, California

Brief Legal Description LOT 8 OF OGLE ADDITION, VOL. 7 PAGE 8, M.C.R.



CORNER TYPE

COORDINATES (Optional)

Government Corner  Control   
Meander  Property   
Rancho  Other   
Date of Survey APRIL 21, 1993

N. \_\_\_\_\_  
E. \_\_\_\_\_  
Zone \_\_\_\_\_ Datum \_\_\_\_\_  
Elev. \_\_\_\_\_

Corner — Left as found  Found and tagged  Established  Reestablished  Rebuilt

Identification and type of corner found: Evidence used to identify or procedure used to establish or reestablish the corner:  
SEE PAGE 2 OF THIS RECORD

A description of the physical condition of the monument as found and as set or reset:  
SEE PAGE 2 OF THIS RECORD

SURVEYOR'S STATEMENT

This Corner Record was prepared by me or under my direction in conformance with the Land Surveyors' Act on 5-21 19 93.

Signed [Signature] L.S. or R.C.E. Number \_\_\_\_\_

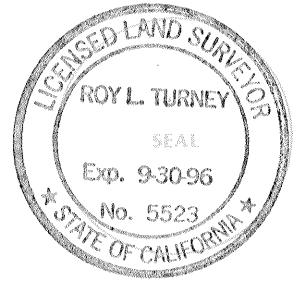


EXP. 9-30-93

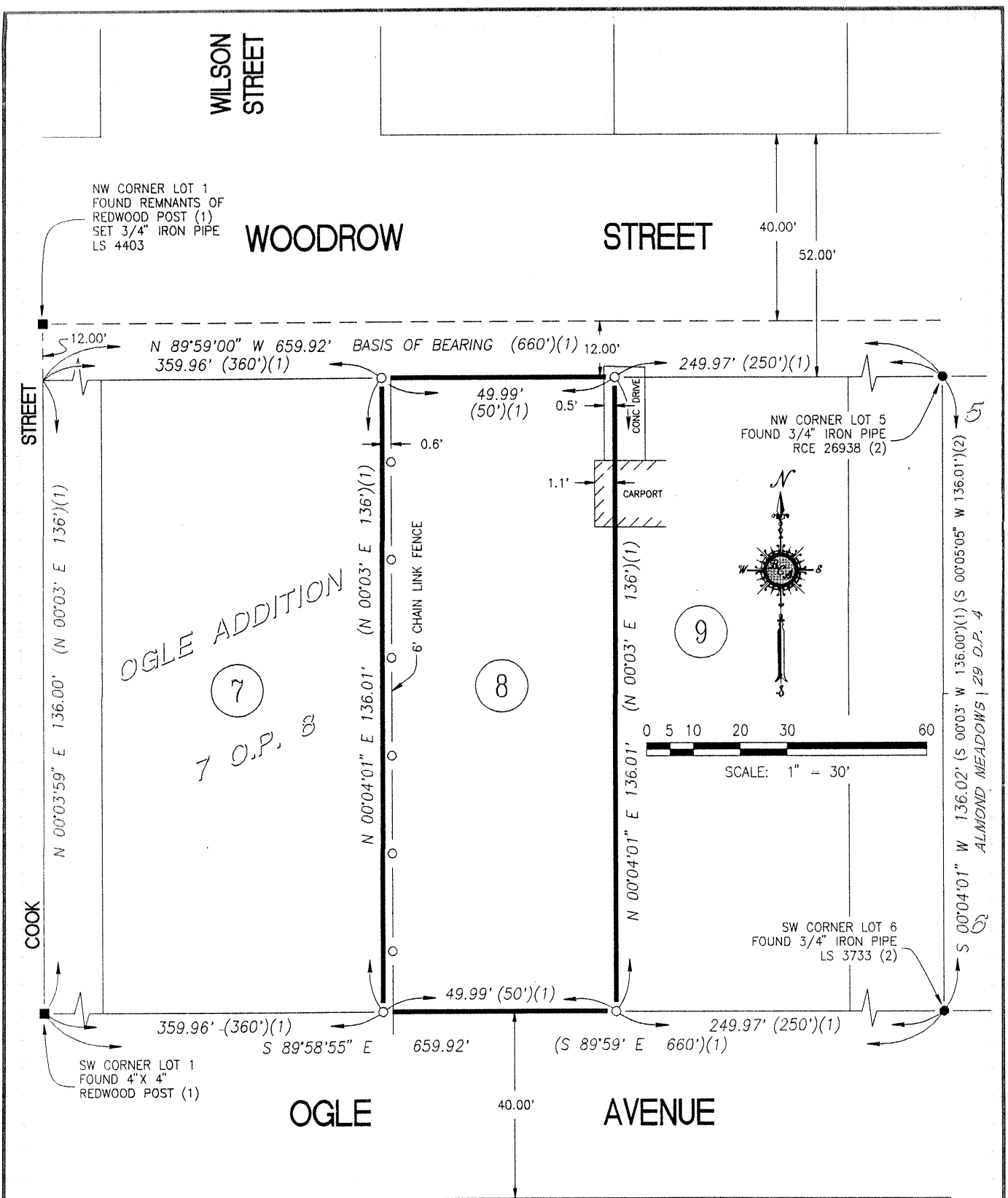
COUNTY SURVEYOR'S STATEMENT

This Corner Record was received 5-24 19 93 and examined and filed 6-9 19 93.

Signed [Signature] Title DEP. CO. SUR.



County Surveyor's Comment \_\_\_\_\_  
\_\_\_\_\_  
\_\_\_\_\_



REFERENCES

- (1) "MAP OF THE OGLE ADDITION TO THE TOWN OF LE GRAND" VOLUME 7 AT PAGE 8, M.C.R.
- (2) "MAP OF ALMOND MEADOWS" VOLUME 29 AT PAGE 4, M.C.R.

BASIS OF BEARING

N 89°59' W BEING THE NORTH LINE OF THE OGLE ADDITION (1)

LEGEND

- ■ FOUND MONUMENT AS NOTED
- SET 3/4" IRON PIPE WITH TAG LS 4403
- (1) ACCORDING TO THAT REFERENCE

NOTE: ALL DISTANCES ARE IN FEET & DECIMAL PARTS THEREOF.