

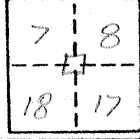
1069 ✓
1067 ✓

CORNER RECORD

COUNTY OF Merced T. 7S R. 16E MDB MERIDIAN CALIFORNIA

CORNER TYPE: GOVT. CORNER MEANDER RANCHO CONTROL OTHER

CORNER IDENTIFICATION — DATE OF VISIT Dec. 30, 1982



CORNER — LEFT AS FOUND FOUND AND TAGGED REESTABLISHED OBLITERATED CORNER REBUILT

PHYSICAL DESCRIPTION OF CORNER FOUND; EVIDENCE AND METHOD USED TO IDENTIFY OR REESTABLISH

Found 6 small cobbles with about 5 lemon size rocks, 2 feet down from pavement, same as corner record No. 1069, County Surveyor records

Found by coming record distance from the south east corner of section 18

PHYSICAL DESCRIPTION OF MONUMENTS REBUILT OR PERPETUATED

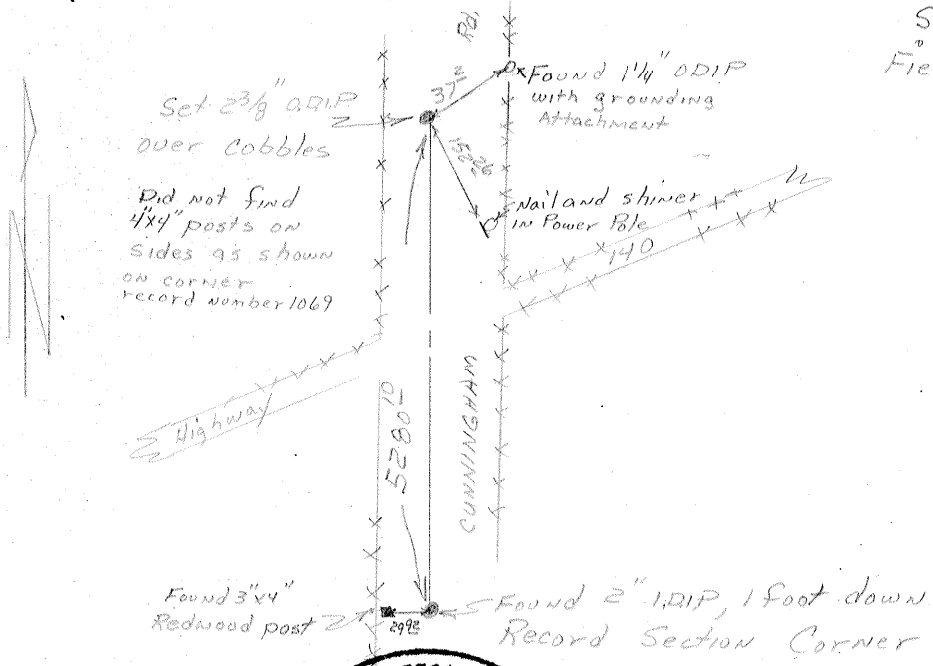
Placed a 2 3/8" ADIP over the cobbles. Marked the sides of the pipe "Co. S., 17, 18, 7, 8"

CALIFORNIA COORDINATE SYSTEM ORDER: FIRST SECOND THIRD

STATIONS USED: NGS (USC & GS) STATE COUNTY OTHER STATION _____ STATION _____

ZONE _____ ELEVATION _____ NORTHINGS (Y) _____ EASTINGS (X) _____

SKETCH: (Include reference tie or witness points, remarks and topo of area)



Survey notes in Field Book 716 page 37

Gary Grinder

January 31, 1983

G.G.

SURVEYOR'S CERTIFICATE

THIS CORNER RECORD WAS PREPARED BY ME OR UNDER MY SUPERVISION AND IN ACCORDANCE WITH THE LAND SURVEYORS ACT

ON 2-19-83

SIGNED: [Signature]

L.S. or R.C.E. No.: 146

PROFESSIONAL ENGINEER
LAND SURVEYING
NO. 14606
CIVIL
STATE OF CALIFORNIA

COUNTY SURVEYOR'S CERTIFICATE

THE CORNER RECORD WAS RECEIVED _____ 19____

AND EXAMINED AND FILED _____ 19____

BY: _____

TITLE: _____

DOCUMENT No. 1069 1067

STATEMENT ON BACK OF SHEET YES NO